



Government of **Western Australia**
Department of **Health**

Westralia - Jurisdictional Update

Rebecca McCann
Program Manager, Infection Prevention Policy and Surveillance Unit

health.wa.gov.au

The diagram illustrates the organizational structure of the Department of Health, Western Australia. At the top, the **Minister for Health** oversees the **Department of Health** (System Manager) and the **Director General**. The Minister for Mental Health oversees the **Mental Health Commission** and the **Mental Health Commissioner**. The Department of Health is responsible for appointing/removing Board Members, designating Chairs/Deputy Chairs, and appointing advisers or administrators. The Department of Health and the Mental Health Commission have a Head agreement. The Department of Health is responsible for establishing, dissolving, and directing Health Service Providers, as well as setting systemwide plans and policy, local plans and policy, policy frameworks and directions, service agreements, and service agreements (consistent with Head agreement). The Health Service Providers are organized into seven main categories: North Metropolitan Health Service, South Metropolitan Health Service, East Metropolitan Health Service, WA Country Health Service, Child and Adolescent Health Service, Health Support Services, and PathWest Laboratory Medicine WA. Each of these categories has a Board and a Chief Executive. The Quadrupole Centre is also a Health Service Provider, with a Chief Executive. A red dashed box highlights the first six categories, and a red arrow points from the Department of Health to the Board of the North Metropolitan Health Service.

```

graph TD
    MH[Minister for Health] -- "Health Services Act 2016" --> DH[Department of Health  
System Manager  
Director General]
    MH -- "Directions and instructions" --> DH
    MMH[Minister for Mental Health] -- "Mental Health Act 2014" --> MHC[Mental Health Commission  
Mental Health Commissioner]
    DH <--> |"Head agreement"| MHC
    DH -- "Establishes, dissolves and directs" --> HSP[Health Service Providers]
    DH -- "Systemwide plans and policy" --> HSP
    DH -- "Local plans and policy" --> HSP
    DH -- "Policy frameworks and directions" --> HSP
    DH -- "Service agreements" --> HSP
    DH -- "Service agreements (consistent with Head agreement)" --> HSP
    HSP --> NMHS[North Metropolitan Health Service]
    HSP --> SMHS[South Metropolitan Health Service]
    HSP --> EMHS[East Metropolitan Health Service]
    HSP --> WACHS[WA Country Health Service]
    HSP --> CHS[Child and Adolescent Health Service]
    HSP --> HSS[Health Support Services]
    HSP --> PMW[PathWest Laboratory Medicine WA]
    HSP --> QC[Quadrupole Centre]
    NMHS --> NMHSB[Board]
    NMHSB --> NMHSEC[Chief Executive]
    SMHS --> SMHSB[Board]
    SMHSB --> SMHSEC[Chief Executive]
    EMHS --> EMHSB[Board]
    EMHSB --> EMHSEC[Chief Executive]
    WACHS --> WACHSB[Board]
    WACHSB --> WACHSEC[Chief Executive]
    CHS --> CHSB[Board]
    CHSB --> CHSEC[Chief Executive]
    HSS --> HSSB[Board]
    HSSB --> HSSSEC[Chief Executive]
    PMW --> PMWB[Board]
    PMWB --> PMWSEC[Chief Executive]
    QC --> QCCE[Chief Executive]
  
```

Minister for Health

Health Services Act 2016

Department of Health
System Manager
Director General

Directions and instructions

Minister for Mental Health

Mental Health Act 2014

Mental Health Commission
Mental Health Commissioner

Head agreement

- Appoints/removes all Board Members
- Designates Chairs/Deputy Chairs
- May appoint advisers or administrators

Establishes, dissolves and directs

Systemwide plans and policy

Local plans and policy

Policy frameworks and directions

Service agreements

Service agreements (consistent with Head agreement)

Health Service Providers

North Metropolitan Health Service

South Metropolitan Health Service

East Metropolitan Health Service

WA Country Health Service

Child and Adolescent Health Service

Health Support Services

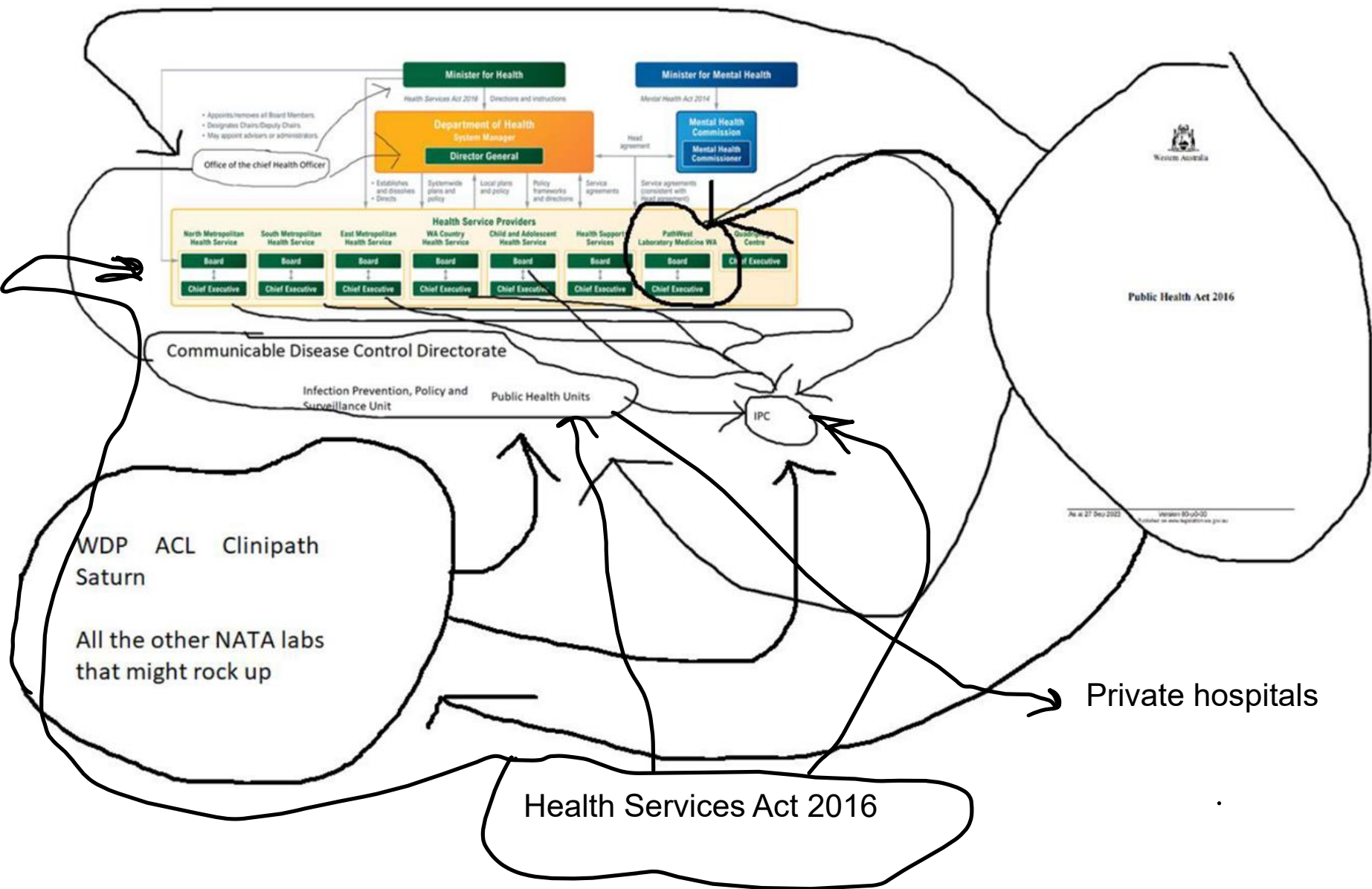
PathWest Laboratory Medicine WA

Quadrupole Centre

Board

Chief Executive

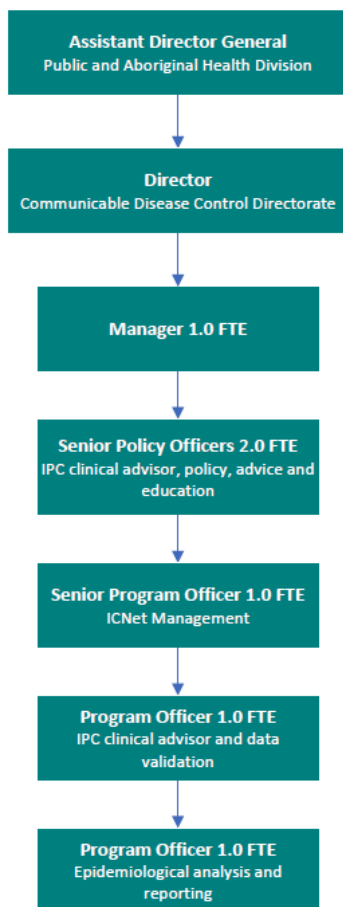




Program and Structure

Infection Prevention Policy and Surveillance Unit (IPPSU)

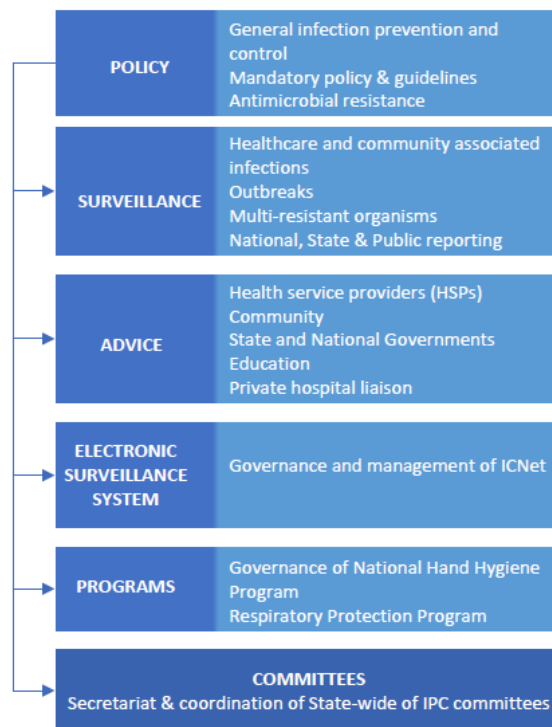
STRUCTURE



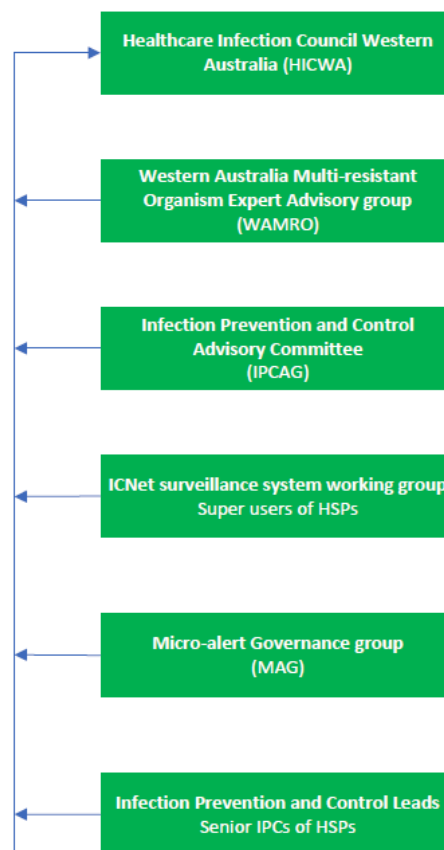
FUNCTIONS

IPPSU

- State-wide strategic infection prevention and control (IPC) planning
- Healthcare and community associated infection surveillance
- Jurisdictional lead for national infection prevention and control committees
- Policy and education



COMMITTEES

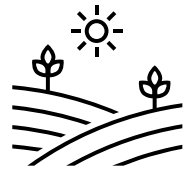


Benefits / Opportunities



- Being located in PAHD and CDCD
 - Good connections with other PAHD Divisions e.g. Environmental, Disaster Management, Aboriginal Health
 - Frontline for emerging issues ADG PAHD = CHO
 - Front and centre for collaboration with Infectious Diseases, Immunisation and SHBBV teams
 - PathWest on WAMRO and HICWA and ICNET
 - Close links/collaboration across the Dept e.g. CE-PSCQ, PSSU, HSPR, Communications.

Program Update - Since 2022



- 2.0 extra FTE
- IPC BAU
 - RPP / COVID / IPC Advisory
- Business case - HISWA database replacement
- Policy compliance audits
- ↑ State-wide education opportunities for IPCs
- ↑ Use of ICNet technology
- Wish List
 - ↑ HAI surveillance indicators
 - ↑ FTE - Medical Director / Extra Epi / Project Person
 - Development program for IPC nurses

Vale
Madeleine
Mary
McPherson
1933 -2023



Part 2

Rebecca McCann

The Future

