

A qualitative review of the role of the Infection Prevention and Control Lead in Residential Aged Care

Logan Salmon *(BN, BPsych Sc, RN, MACN)*

Practice Development Lead – ACS

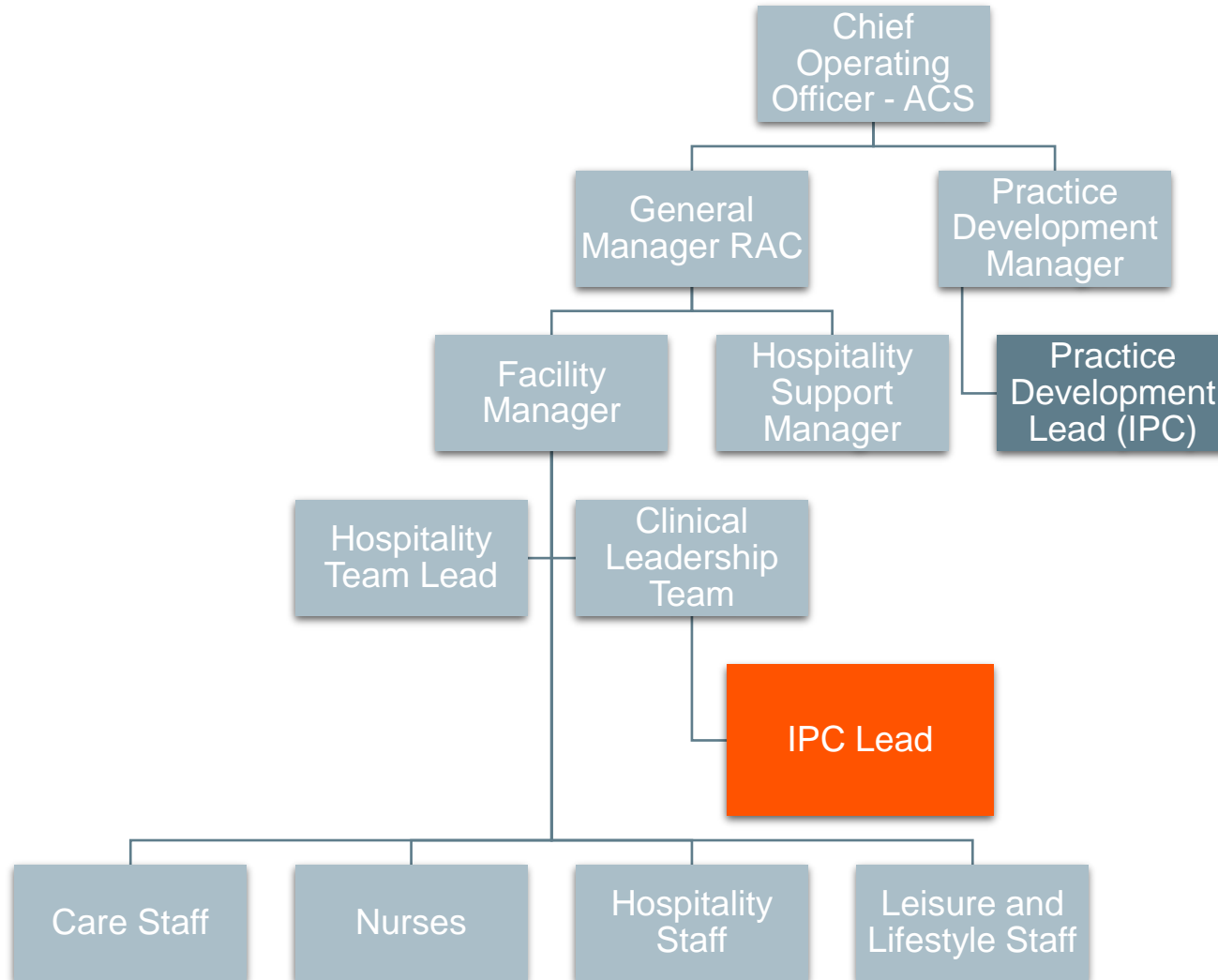
Anglicare Southern Queensland

lsalmon@anglicaresq.org.au

Nothing to disclose or declare



Introduction



- Department of Health introduced IPC Lead role 31 Dec 2020.
- Practice Development Lead (IPC Portfolio) introduced 2023.
- Practice Development Lead supports IPC Lead.
- Enables the IPC Lead to ‘do the doing’ on the ground.

Note: this is not an exhaustive diagram.

Figure 1: Clinical governance overview of a residential aged care provider’s structure regarding the IPC Lead role.



Methods

Aim

Explore the translation of IPC theory into practice in the RAC environment, have a better understanding of the embedding of the IPC Lead role and how the PD Lead role supports the IPC Lead role.

Participants

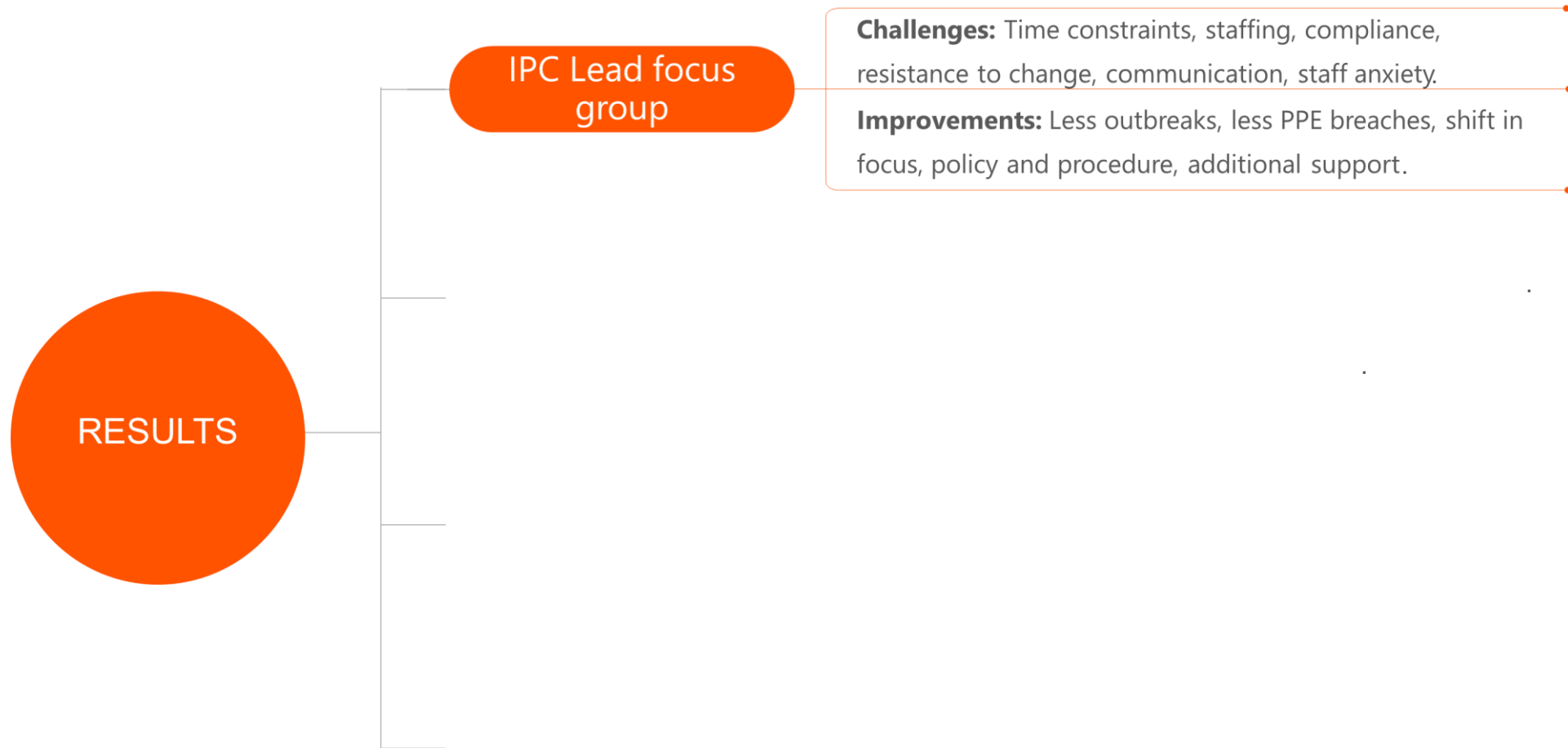
44 Aged care residents; 8 IPC Leads; 1 Public Health Unit; 4 GPs across aged care facilities.

Research conducted

IPC Lead guided focus groups; IPC Lead Reflection-based written activity; 5 open-ended question-based survey (6 question, 3-point Likert scale response provided to residents; 5 open-ended questionnaire provided to GPs; 5 open-ended questionnaire provided to Public Health Unit); Video discussion of IPC Lead role.

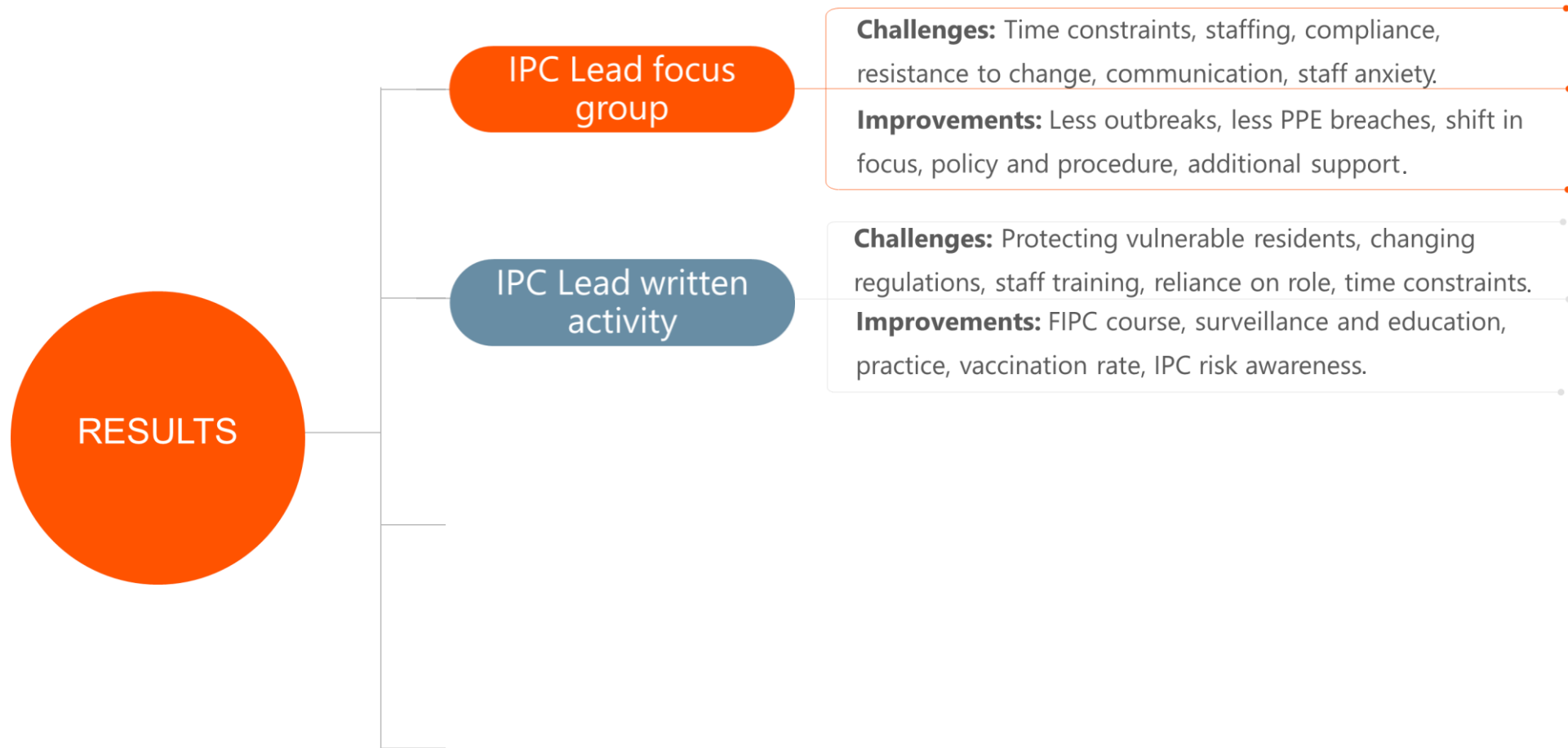


What we Found:





What we Found:





What we Found:





What we Found:

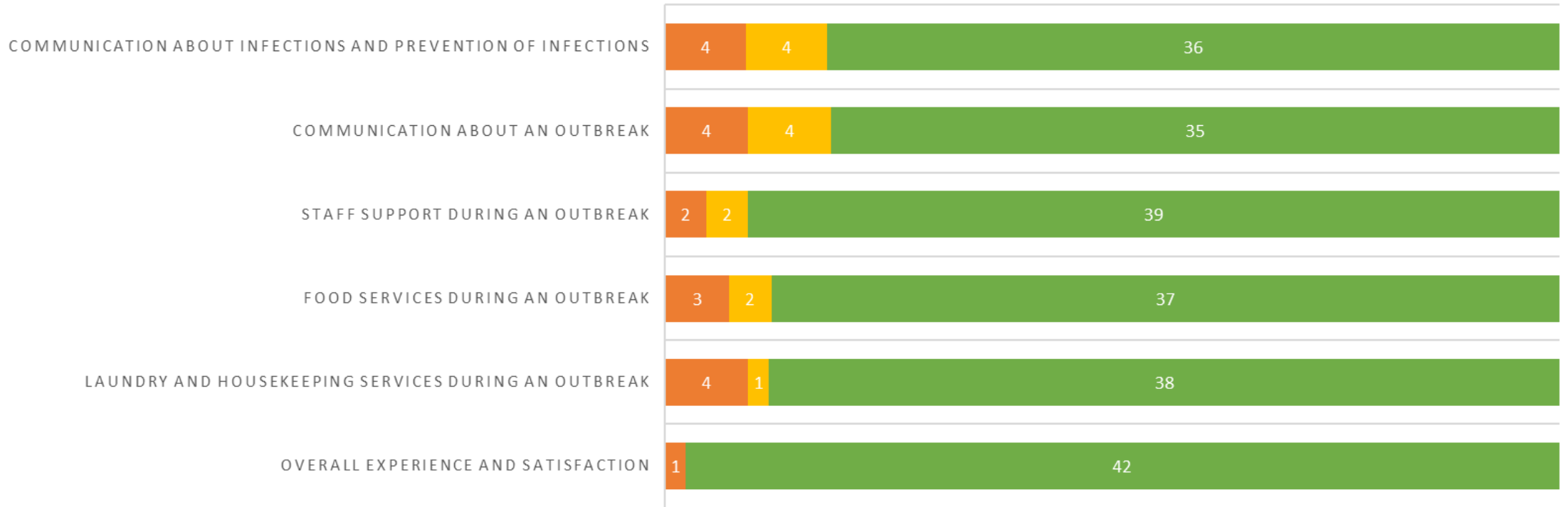




Resident Survey

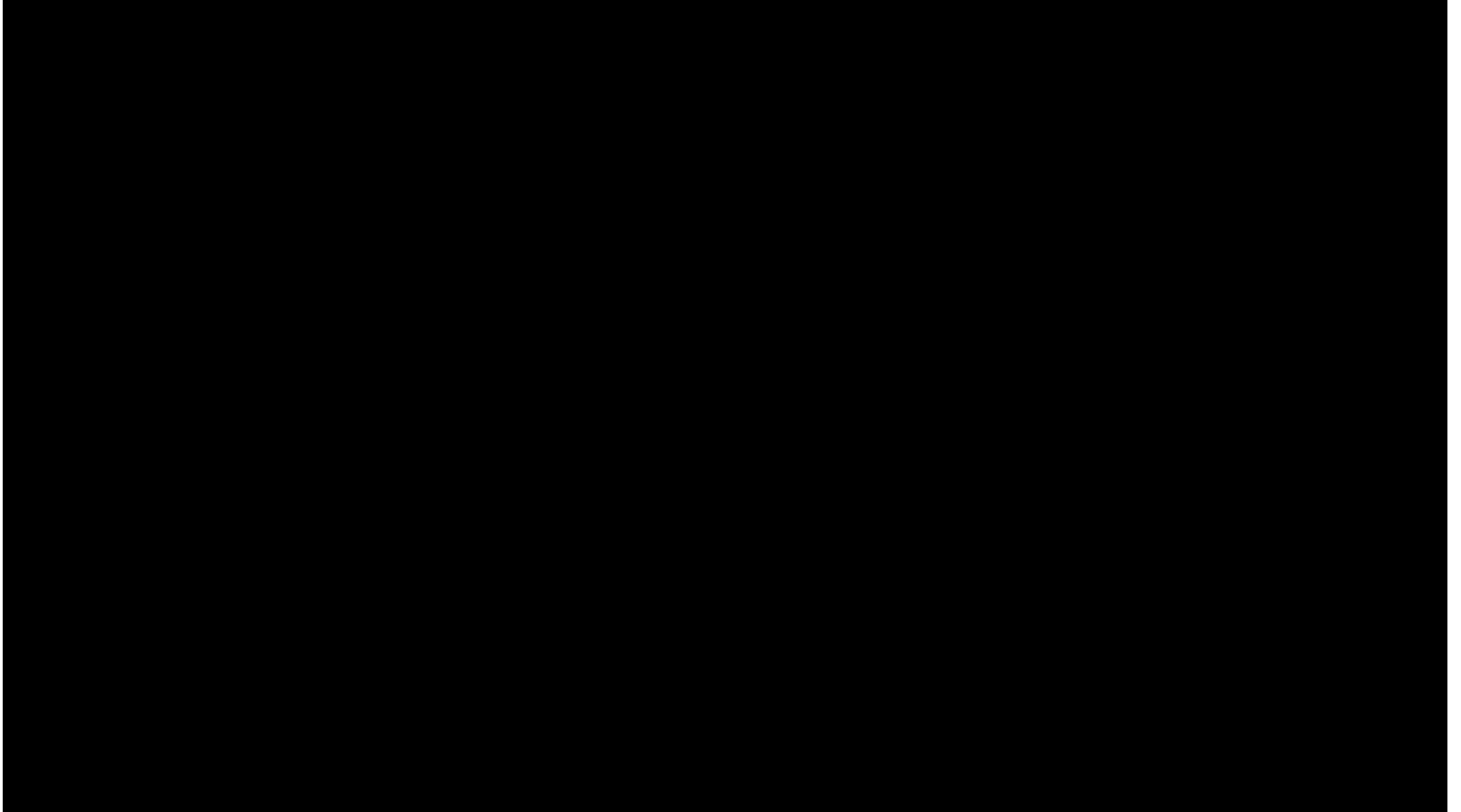
RESIDENT SURVEY

■ Unsure ■ Disappointed ■ Happy





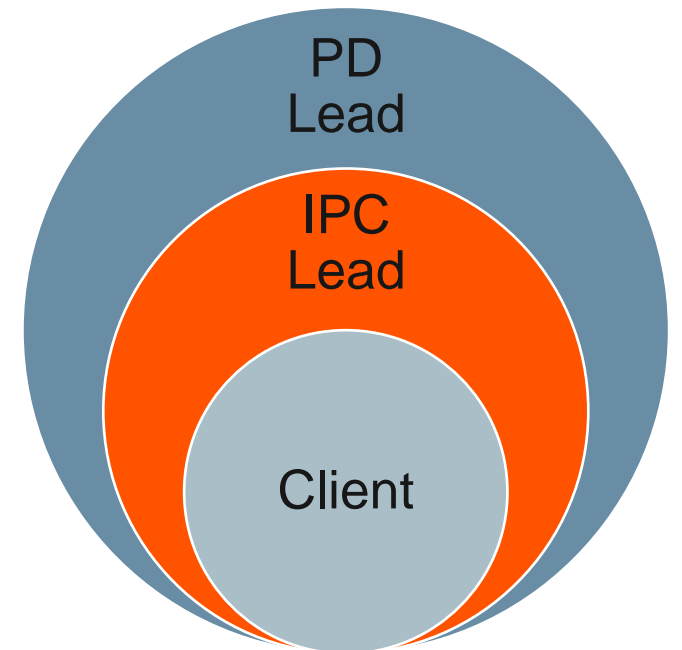
Video Discussion





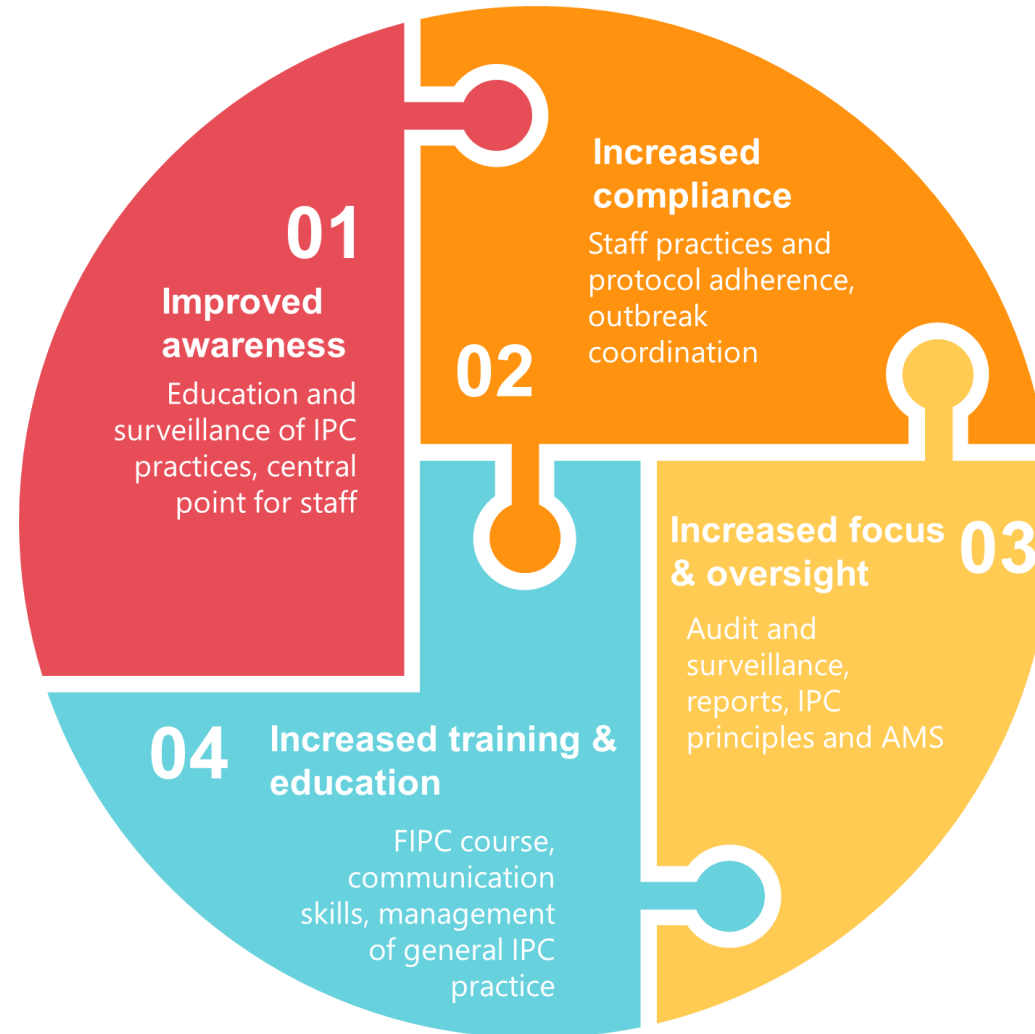
Impact of the Practice Development Lead Role

- Provides consistent approach across Organisation.
- Support and education for IPC Leads.
- Update to policy and procedure.
- Sector collaboration.
- Central point of reference for IPC Leads.
- Recommendation on equipment, products, IPC practices and principles.



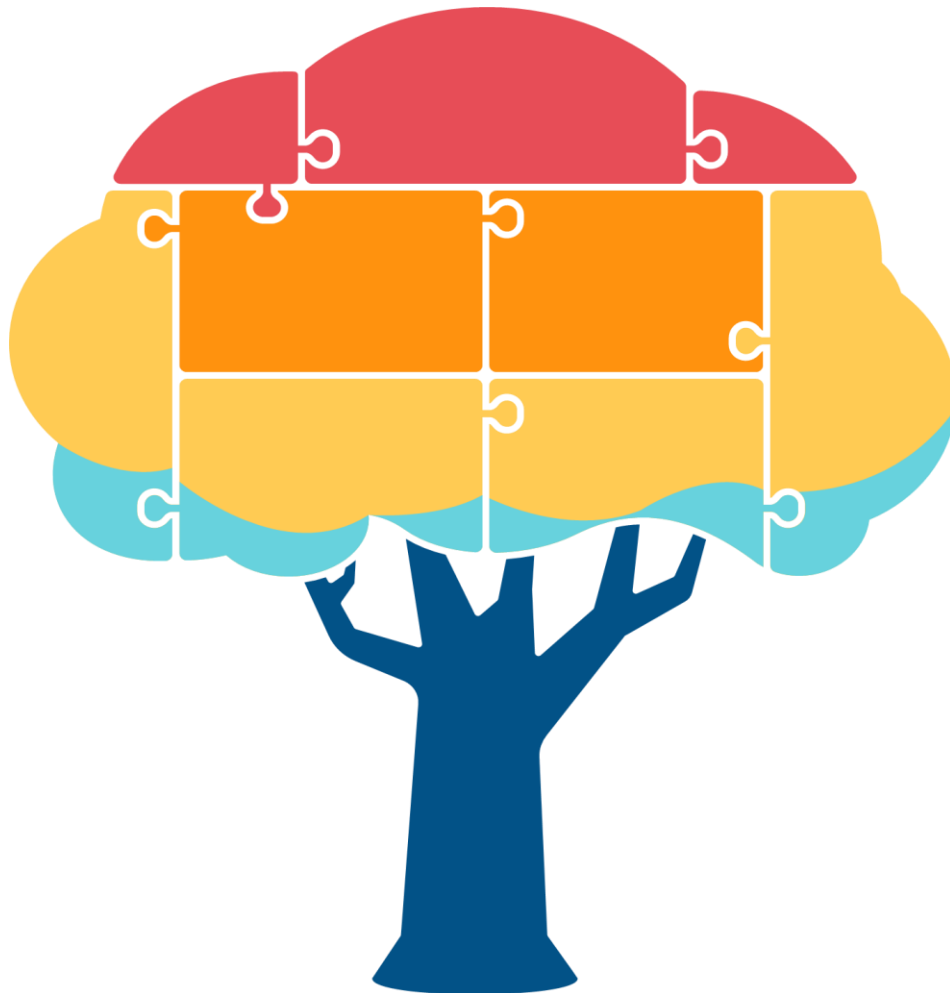


Embedding of the IPC Lead Role





Translation of Theory Into Practice



1

KNOWLEDGE

IPC principles applied to environment

2

AMS

Improved stewardship and vaccination

3

COMMUNICATION

Link-in with PHU, GPs, residents, visitors, and staff

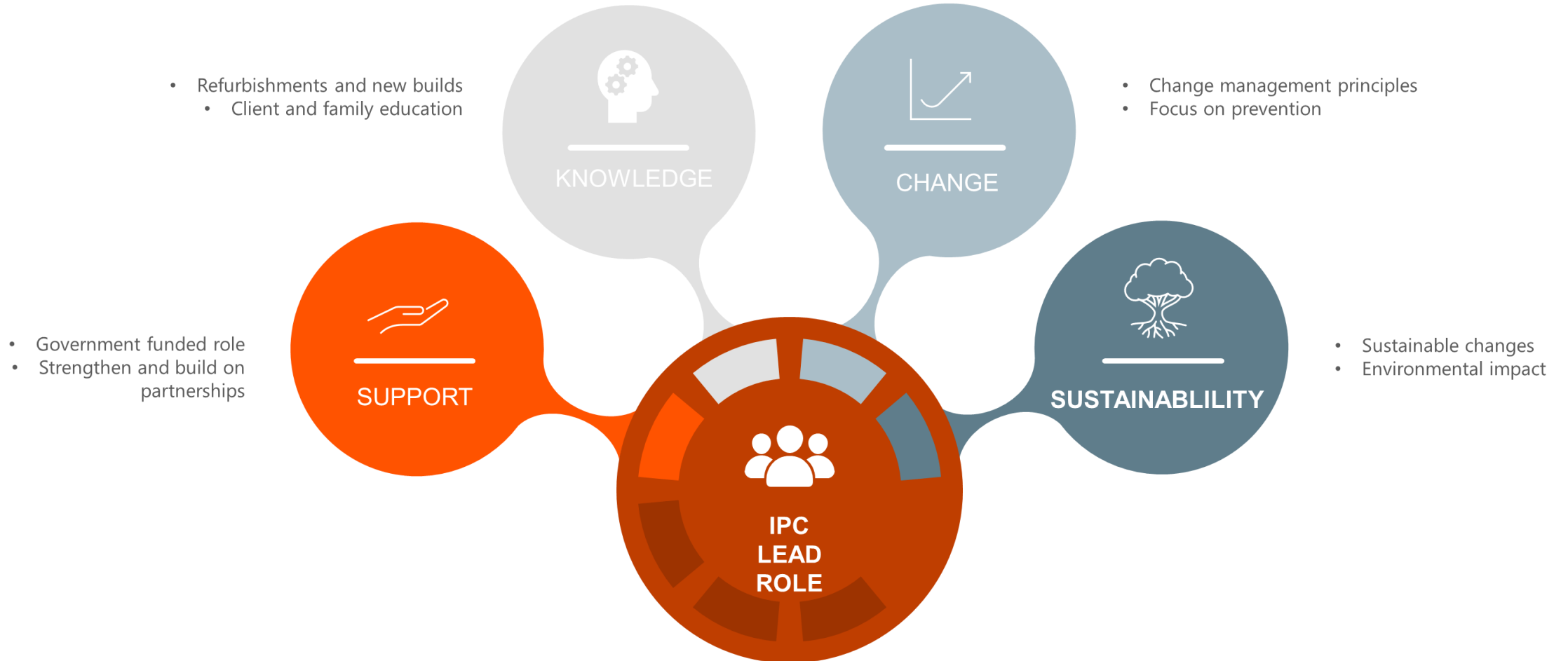
4

AUDIT & SURVEILLANCE

Staff compliance, breach monitoring, trends, reporting



Next Steps





Conclusion

- IPC theory into practice has been **translated well in aged care**.
- IPC Lead role has been **successfully embedded**, with the support of the Practice Development Lead, but **needs to continue to grow and change** (to prepare for Disease X).
- Focus moving forward...**keep the momentum in aged care and make sustainable changes!**



Acknowledgements

Claire Halle (RN, RM, BA
Nsg,
GradCertCritCareNsg,
GradCertCh&FamHlthNsg,
GradCertLead&Mgt,
GradCertIPC)

Anglicare Southern
Queensland

BeeJay (resident)

Dr Ball

Sujata Ghimire
&
Rosy Khwaunju

Metro North PHU



Thank you

Any Questions?

Contact details:

Logan Salmon *(BN, BPsych Sc, RN, MACN)*

lsalmon@anglicaresq.org.au

0499 526 913

