



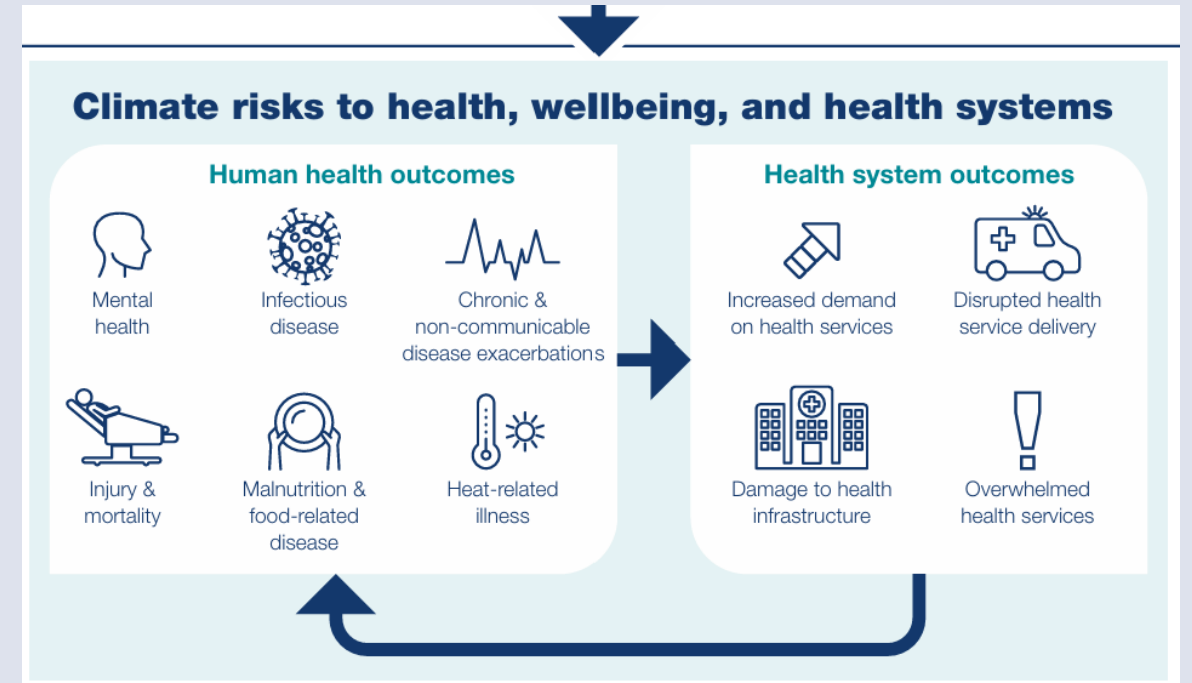
Integrating sustainability into infection control: A Pathway to a Green Healthcare

Sarah Ripley, RN, Sustainable healthcare
manager, Sustainable healthcare consultant.

The Interconnected Evolution of Climate Change and Hospital-Acquired Infections: A personal timeline



Environmental Impact of Healthcare Practice



Australian Government, Department of Health and Aged Care. *National Health and Climate Strategy* (December 2023). Available at: <https://www.health.gov.au/sites/default/files/2023-12/national-health-and-climate-strategy.pdf>

Environmental Impact of Single-use Plastics





LET'S DO THIS!



Plastic Solution ONE:



Environmental Impact of healthcare practices: Waste Management

General Waste



LANDFILL



Landfill with gas flaring

Co-Mingle

Dry Waste



ALTERNATIVE FUEL FACILITY



Processed Engineered Fuel (PEF)

Hazardous Waste

Sharps



MEDICAL INCINERATOR



Incinerated and landfilled

Join Today! →



It's Warming

It's US

We're Sure

It's Bad for Health

We can FIX it!