

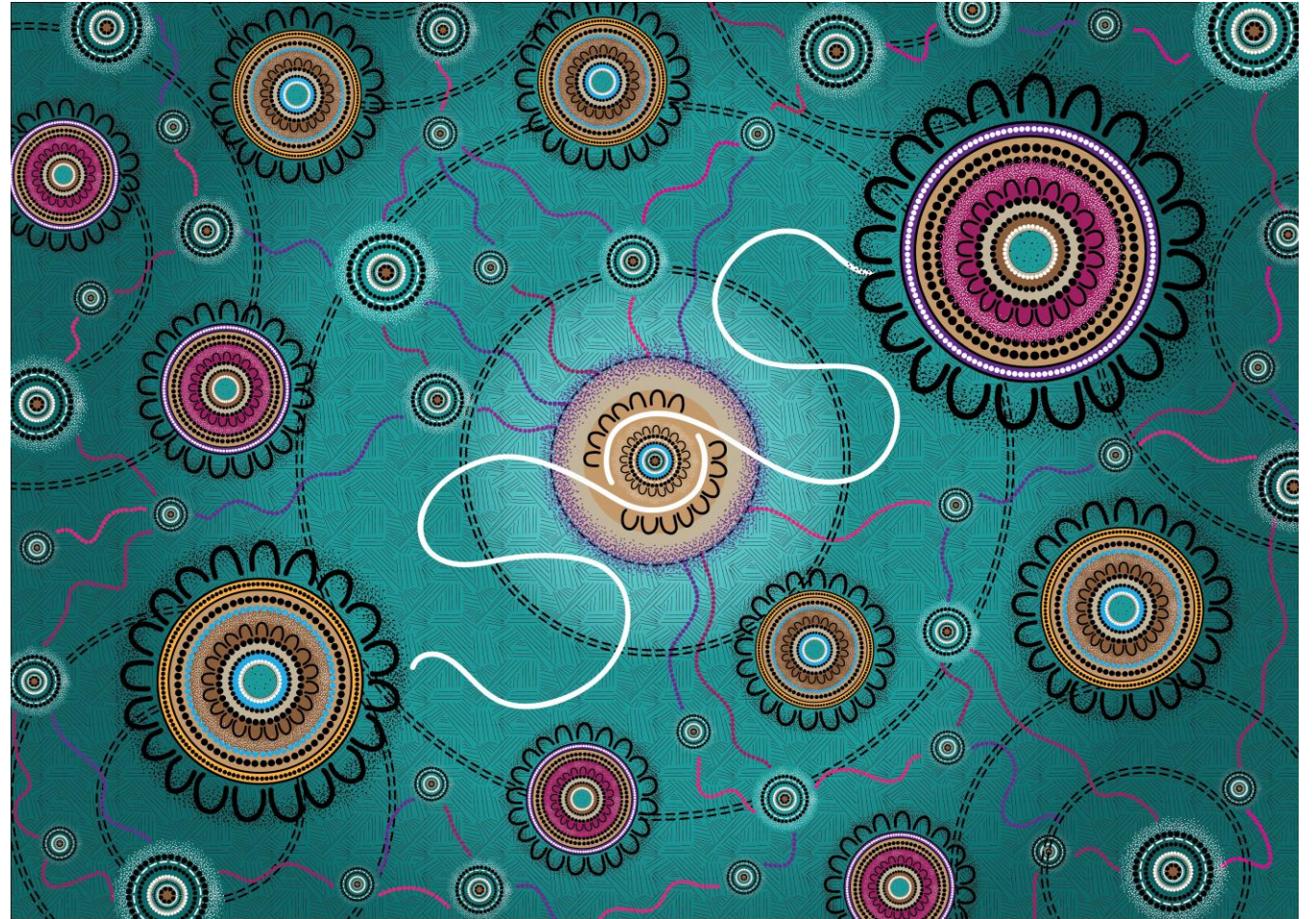
# High consequences infectious diseases – how to prepare infection prevention and control professionals for the next challenge?



CLINICAL  
EXCELLENCE  
COMMISSION

## Acknowledgement of Country and Elders

I would like to acknowledge the traditional owners of the land where we meet today and pay my respects to Elders past and present.



Health Custodian' by Jasmine Sarin

# Disclosure

I have no potential conflicts of interest to declare.

# Acknowledgement

- Stephanie Wilcox, Education and Clinical Lead, CICIP Primary (CIPC-P)
- Kathy Dempsey NSW Chief ICP & HAI Advisor | IPAC COVID-19 Response Clinical Lead, Infection Prevention and Control Practitioner (CICPE; FACIPC)
- Nicole Tolhurst Program Clinical Lead, Infection Prevention and Control Practitioner (CICPA)

# Background

- High-consequence infectious diseases (HCIDs) have become an increased public health concern globally over the past number of years
- Pandemic preparedness is a key priority for health organisations and government agencies
- HCIDs, including Viral Haemorrhagic Fevers (VHFs), have the potential to cause outbreaks and require particular focus for preparedness due to their high mortality rates
- Several HCIDs are transmissible from person to person and therefore require health workers to take precautions to prevent transmission

# High consequences infectious diseases

HCIDs typically characterised by the following features:

- An acute infectious disease
- A high case-fatality rate
- May be no effective prophylaxis or treatment
- May be difficult to recognise/detect rapidly
- Can spread in the community and within healthcare settings
- Require an enhanced individual, population, and system response to ensure effective, efficient and safe management.

# Role of the Clinical Excellence Commission

- The CEC is the lead agency for patient safety and quality care for NSW Health, including having responsibility for developing and leading the IPAC and Healthcare associated Infection (HAI) program
- The IPAC/HAI team is also responsible for preparing the system within the local health districts/speciality health networks (LHDs/SHNs) to accommodate and care for suspected or confirmed HCID patients.
- A post pandemic stock takes of the available resources highlighted the need for specific training materials, policies, and procedures as well as the provision of face-to-face training on PPE use.

# Why should we prepare?

Infection prevention and control professionals (ICPs) are not new to public health emergencies, but our recent experience has shown that ongoing preparedness is critical to reduce the risks.

ICPs are responsible for ensuring clinicians are well equipped with comprehensive and robust infection prevention and control strategies to manage any infectious diseases.

## Aim

To develop and implement a standardised personal protective equipment (PPE) donning and doffing training program to prepare and strengthen the system for HCIDs response and management.

# NSW Health Preparedness



## High Consequence Infectious Diseases – Infection Prevention and Control Principles

Version 1.0

April 2024

### Policy Directive

#### Early Response to High Consequence Infectious Diseases

**Summary** This document outlines the roles and responsibilities of all NSW Health parties involved in the initial stage of a centrally coordinated response to the identification of a High Consequence Infectious Disease case in NSW.

**Document type** Policy Directive

**Document number** PD2024\_005

**Publication date** 13 February 2024

**Author branch** Public Health Preparedness

**Branch contact** 02 9391 9495

**Review date** 13 February 2029

# The program encompass

Development of educational videos:

[Donning personal protective equipment \(PPE\) for high consequence infectious diseases \(HCIDs\)](#)

[Doffing personal protective equipment \(PPE\) for high consequence infectious diseases \(HCIDs\)](#)

# Donning and doffing checklist

## Checklist before entering isolation room – HCID Level 2 PPE

Name of healthcare worker (HW): \_\_\_\_\_

Name of buddy (optional): \_\_\_\_\_

Where possible and available, use of a buddy is preferred and recommended. Buddy role is to read out the steps, direct and observe. If buddy is not available, use this checklist (hardcopy) and a mirror to assist in donning checks.

Date: \_\_\_\_\_ Time: \_\_\_\_\_ MRN: \_\_\_\_\_

PREPARATION PPE DONNING			
Step	Actions	Completed	
1	Designated PPE zone	<input type="checkbox"/>	
	All equipment and in correct size	<input type="checkbox"/>	
	<b>Equipment required:</b>		
	• HW to wear surgical scrubs or health uniform and closed-in shoes	<input type="checkbox"/>	
	• Thermometer and logbook	<input type="checkbox"/>	
	• Inner gloves (different colour if available)	<input type="checkbox"/>	
	• Fluid resistant long sleeve gown	<input type="checkbox"/>	
	• P2/N95 respirator the HW has been successfully fit tested for	<input type="checkbox"/>	
	• Eye protection (face shield recommended)	<input type="checkbox"/>	
	• Outer gloves with long cuff	<input type="checkbox"/>	
	• Stool/chair (cleanable and without arms)	<input type="checkbox"/>	

	• All jewellery has been removed and bare below the elbow	<input type="checkbox"/>
	• Hair is off the face and collar and tied in a ponytail or bun if required	<input type="checkbox"/>
	• HWs with facial hair to follow local policy on beard cover	<input type="checkbox"/>
	• No jumpers, jackets or vests are on	<input type="checkbox"/>
	• No wallets, phones, pagers or pens are in pockets	<input type="checkbox"/>
	• No ID tag is hanging from scrubs	<input type="checkbox"/>
7	Record HWs temperature in logbook	<input type="checkbox"/>
<b>DONNING PPE</b>		
<b>Move to step 2 if booties are not needed</b>		
1	<b>Wet patient or level 2:</b> Sit and don booties CHECK – booties are secure around ankles and knees and ties are tied	<input type="checkbox"/>
2	Perform hand hygiene	<input type="checkbox"/>
3	Don P2/N95 respirator and perform fit check	<input type="checkbox"/>
	<i>Optional – secure own spectacles, keeping them in place (if applicable)</i>	<input type="checkbox"/>
<b>Move to step 5 if hood is not needed</b>		
4	Don surgical hood <i>Tape at crown of head if required to prevent moving over eyes</i>	<input type="checkbox"/>
5	Perform hand hygiene	<input type="checkbox"/>
6	Don inner pair of gloves	<input type="checkbox"/>
7	<b>CHECK gown for any tears or holes</b> Don gown and tie	<input type="checkbox"/>

# Competency Assessment

## HCID PPE level 2 donning and doffing

<b>Health worker name:</b>		<b>Stafflink number:</b>	
<b>Facility/Department:</b>			
<b>Assessed in:</b>	<input type="checkbox"/> Clinical practice <input type="checkbox"/> Simulation	<b>Date deemed competent:</b>	
Education pre-requisite requirements			Date completed
<b>Policy reviewed</b>	<ol style="list-style-type: none"> <li>1. NSW Health Policy Directive Early Response to High Consequence Infectious Diseases</li> <li>2. NSW State Emergency Management Plan (EMPLAN)</li> <li>3. NSW Health Emergency preparedness</li> <li>4. NSW Health Public Health Emergency Response Preparedness</li> <li>5. High Consequence Infectious Diseases – Infection Prevention and Control Principles</li> </ol>		
<b>My Health Learning</b>	<ol style="list-style-type: none"> <li>1. Infection Prevention and Control Practices</li> <li>2. Hand Hygiene eLearning</li> <li>3. Hand Hygiene Competency Assessment</li> <li>4. PPE for Combined Transmission-based Precautions</li> <li>5. Donning and Doffing of PPE Competency Assessment</li> <li>6. Donning and Fit Checking of P2 or N95 Respirators in NSW Healthcare Settings</li> <li>7. Watched the appropriate <a href="#">CEC Donning and Fit Checking of Respirators</a> video for the respirator that will be used in the assessment for correct application and removal</li> </ol>		

# PPE Train the Trainer

OFFICIAL: Sensitive – NSW Government



## Welcome to the PPE train the Trainer

Welcome! We are so happy you are here. Consider this your home base to find the support and resources you need to be successful in your new role of personal protective equipment trainer. This SharePoint site will allow you to access the trainer materials for standard and transmission-based precautions and high consequence infectious diseases PPE training.

### Resources



IPAC & HAI Program - CEC page



Infection Prevention and Control Practice Handbook



Australian Guidelines for the Prevention and Control of...



HCID donning and doffing checklist



HCID temperature logbook health worker record



High Consequence Infectious Diseases - Infection Prevention...



Early Response to High Consequence Infectious Diseases...



High Consequence Infectious Diseases - CEC website

OFFICIAL: Sensitive – NSW Government

# NSW Biocontainment Centre (NBC)



NSW Biocontainment Centre  Public group

[Home](#) [About Us](#) [HCID Resources](#) [HCID Therapeutics](#) [Join Us](#) [NBC Training](#) [Recycle bin](#)

To discuss patient referrals with the  
**NSW Specialist Service for High Consequence Infectious Diseases**

call 1800 424 300



About the NSW Biocontainment Centre



High Consequence  
Infectious Diseases  
resources



Join Us



Training



HCID Therapeutics

# FACE-FACE TRAINING

# LHD/SHN preparedness

- Contingency plan for the assessment and management of patients with an increased possibility for a HCID
- Workforce contingency considerations
- Identified isolation care area with private bathroom facilities
- Appropriate (supply) of personal protective equipment (PPE)
- Education PPE and preparedness
- Arrangements for transfer of patients to Westmead NBC

# Risk assessment for PPE requirement

## Before entering a patient room/zone

Perform hand hygiene

Select PPE based on risk assessment

Risk of exposure	PPE Level
<b>Dry patients</b> - conditions with a low risk of organism dispersal	Level 1
<b>Wet patient</b> - conditions that potentially increase the risk of organism dispersal	Level 2

# PPE selection

PPE Level 1	PPE Level 2
Non-sterile gloves	Non-sterile gloves – two pairs (long cuff if available)
Long sleeve fluid resistant gown where the wrist is covered by gloves	Long sleeve fluid resistant gown where the wrist is covered by gloves
Fitted fluid resistant P2/N95 respirator	Fitted fluid resistant disposable P2/N95 respirator
Eye protection	Face shield
Closed in shoes	Surgical hood
	Below knee booties to cover shoes (closed in shoes)

# Donning and Doffing Sequence - Practical Application



CLINICAL  
EXCELLENCE  
COMMISSION



# Evaluation – Post Training

Ethics approval from NSLHD for a statewide evaluation of the program

PPE Level 2 training provided to 269 staff so far

136 participants completed the survey (>50%)

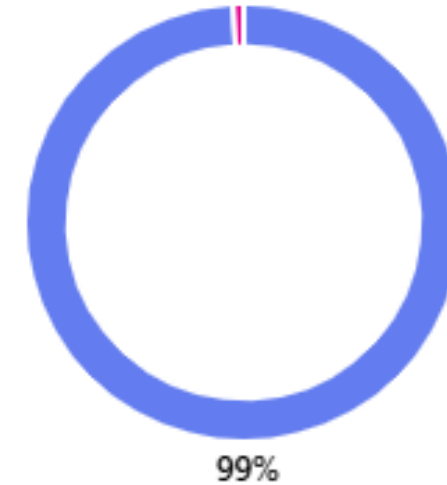
**Do you feel confident now with adhering to PPE requirements if you have to provide care to a suspected/confirmed HCID patient?**

● Confident	121
● Neutral	11
● Not confident	0



# Do you think the CEC videos on donning and doffing for HCID PPE are a useful resource to refresh your skills or as just in time education

● Yes 131  
● No 1



# Where to from here?

Completion of face-to-face training  
(rural and metro)

Completion of statewide program  
evaluation

Report and publish of the evaluation  
outcomes

Development of new resources (if  
required) and share via TEAMS  
channel and internet



# Contact details

## Dr Susan Jain

MIPH PhD CACP Expert (CIPC-E)

Conjoint Academic, University of New South Wales

Principal Advisor, Research Lead

Infection Prevention and Control | HAI Program

Clinical Excellence Commission

T 02 9269 5552 M 0436484762

E [susan.jain@health.nsw.gov.au](mailto:susan.jain@health.nsw.gov.au)

W [cec.health.nsw.gov.au](http://cec.health.nsw.gov.au)

1 Reserve Road St Leonards NSW 2065

Locked Bag 2030, St Leonards NSW 1590

