

Implementing an IPC plan in an equine hospital

Anna Blishen



Image: Scone Equine Hospital

I have the following disclosures related to my presentation:

Funding sources: *None*

Financial interests: *None*

Other: *Employee of Scone Equine Hospital*



Scone Equine Hospital

Largest equine veterinary practice
in Australia

2nd largest thoroughbred horse
breeding area in the world



Image: Scone Equine Hospital



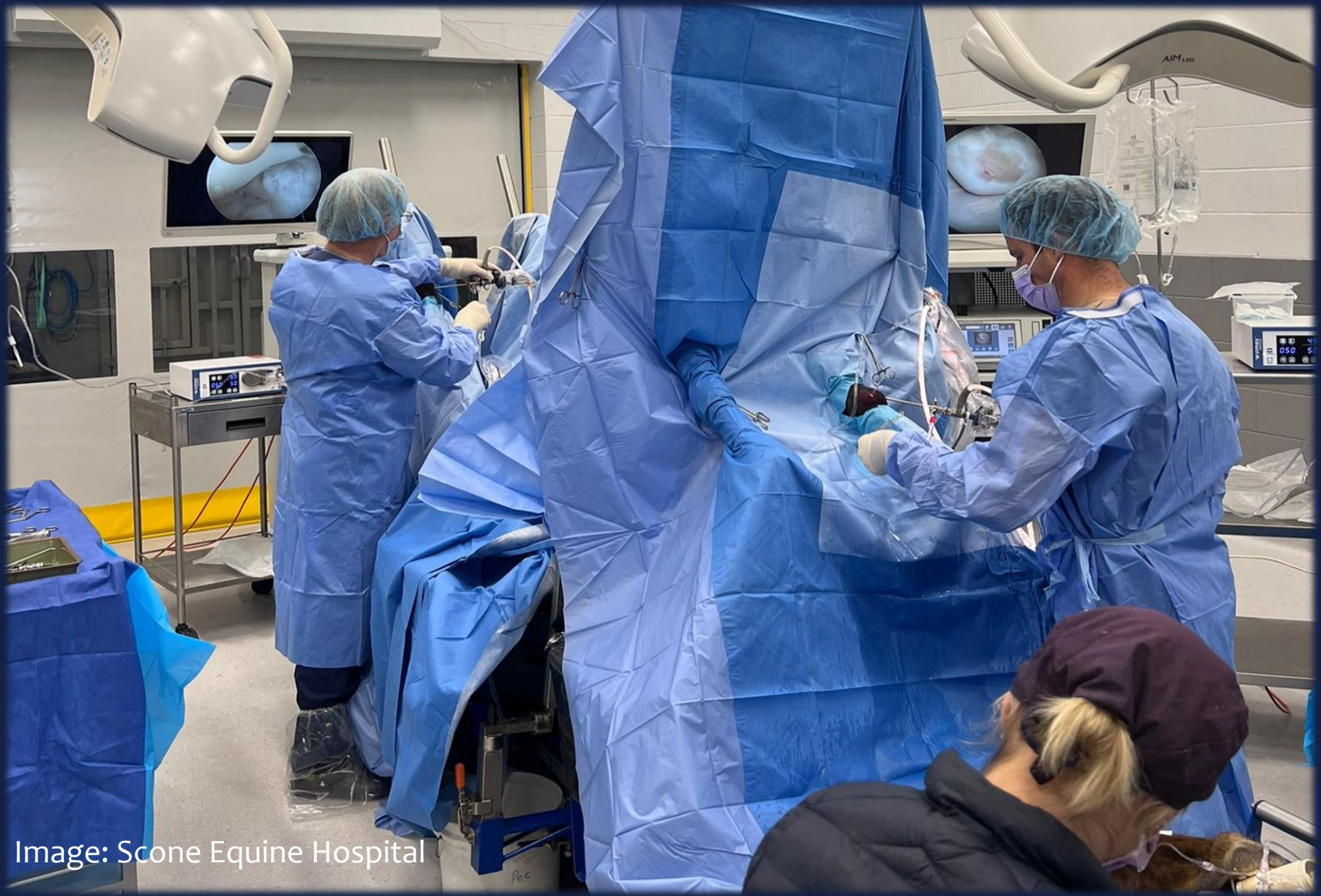


Image: Scone Equine Hospital





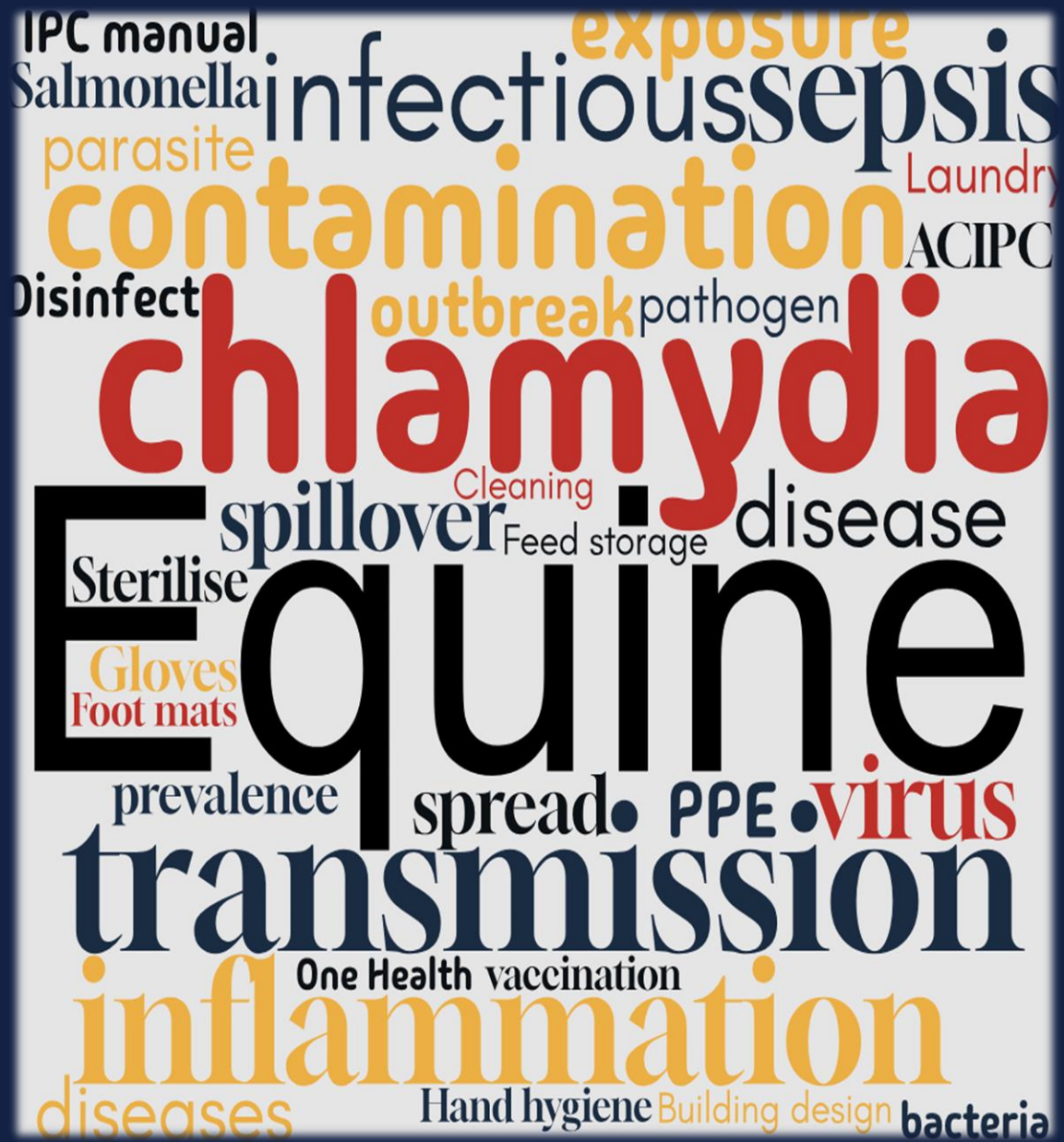
Images: Scone Equine Hospital





Images: Scone Equine Hospital





<https://www.wordclouds.com/>

Where do we start...?



IPC
Committee



Establishing a committee

Support from management

Engaging with departments

Starting points

- Hand hygiene
- Antimicrobial stewardship
- Waste
- Cleaning



Hand hygiene

Get the basics in place

World Hand Hygiene Day

Training



Image: Scone Equine Hospital



Antimicrobial stewardship

Traffic Light system



Review treatment protocols & consider alternatives

Challenges

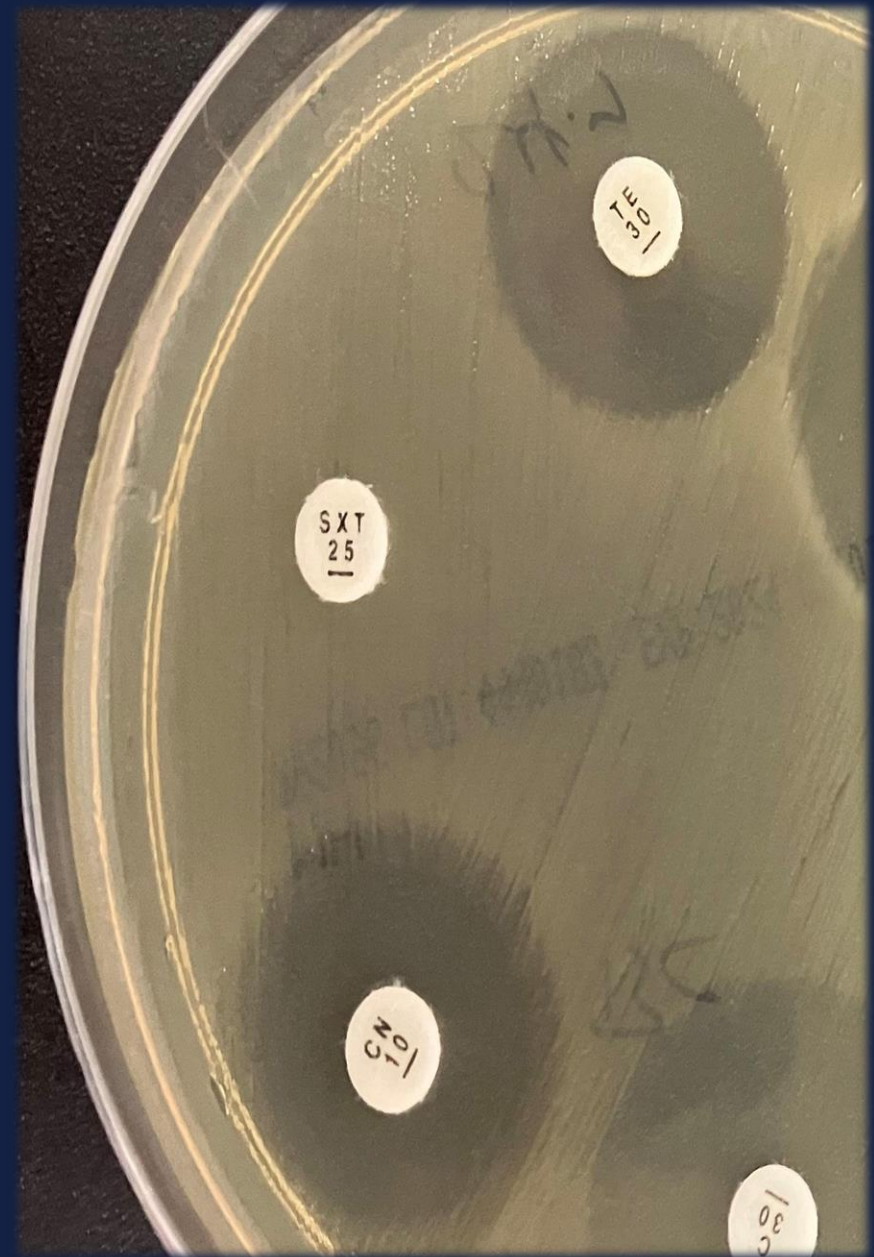


Image: Scone Equine Hospital



Waste disposal

General waste/recycling

Chemical waste

Cytotoxic waste

Sharps / Clinical waste

Stable waste

Deceased horses



Image: Scone Equine Hospital



Cleaning

Standard procedures

Who is responsible and when?

Allocated staff



Image: Scone Equine Hospital



Significant isolates/test results

Chlamydia psittaci

Viral testing (zoonotic potential)

Surgical site infections/catheter site

Salmonella testing (clinical /environmental)



Salmonella

Routine faecal culture on cases admitted to ICU facilities since 2020

Environmental surveillance of ICU facilities

Salmonella Muenster



Salmonella

Aug 2024 – current

- Hospital-acquired cases
- Widespread environmental recovery

***Salmonella* as a Biosensor**

“We use *Salmonella* as our biosensor because it is, without a doubt, the most prevalent cause of hospital-associated infections in large animal veterinary teaching hospitals,” Aceto said, noting that *Salmonella* is an effective biosensor because it is easy to detect, survives well, is difficult to kill, and can spread easily. “*Salmonella* is a good indicator of the effectiveness of an infection control program.”

<https://www.vet.upenn.edu/about/news-room/bellwether/new-bolton-post/new-bolton-post-summer-2015/moran-critical-care-center>



Where to from here...?

The only way is up!

- Hand hygiene
- AMS
- Cleaning
- Waste disposal

Veterinary Foundations IPC
course - ACIPC



Image: Scone Equine Hospital



Thank you

- ACIPC
- Dr Angela Willemsen
- Scone Equine Hospital
 - Marketing team (Alice and Chloe)
 - Dr Catherine Chicken



Image: Scone Equine Hospital

