



One Health Under the Microscope

Paper presented at
**ACIPC International
Conference**
17-20 Nov 2024
Melbourne, Australia

Maxine Whittaker



Australasian College
for Infection Prevention and Control



Acknowledgment of country

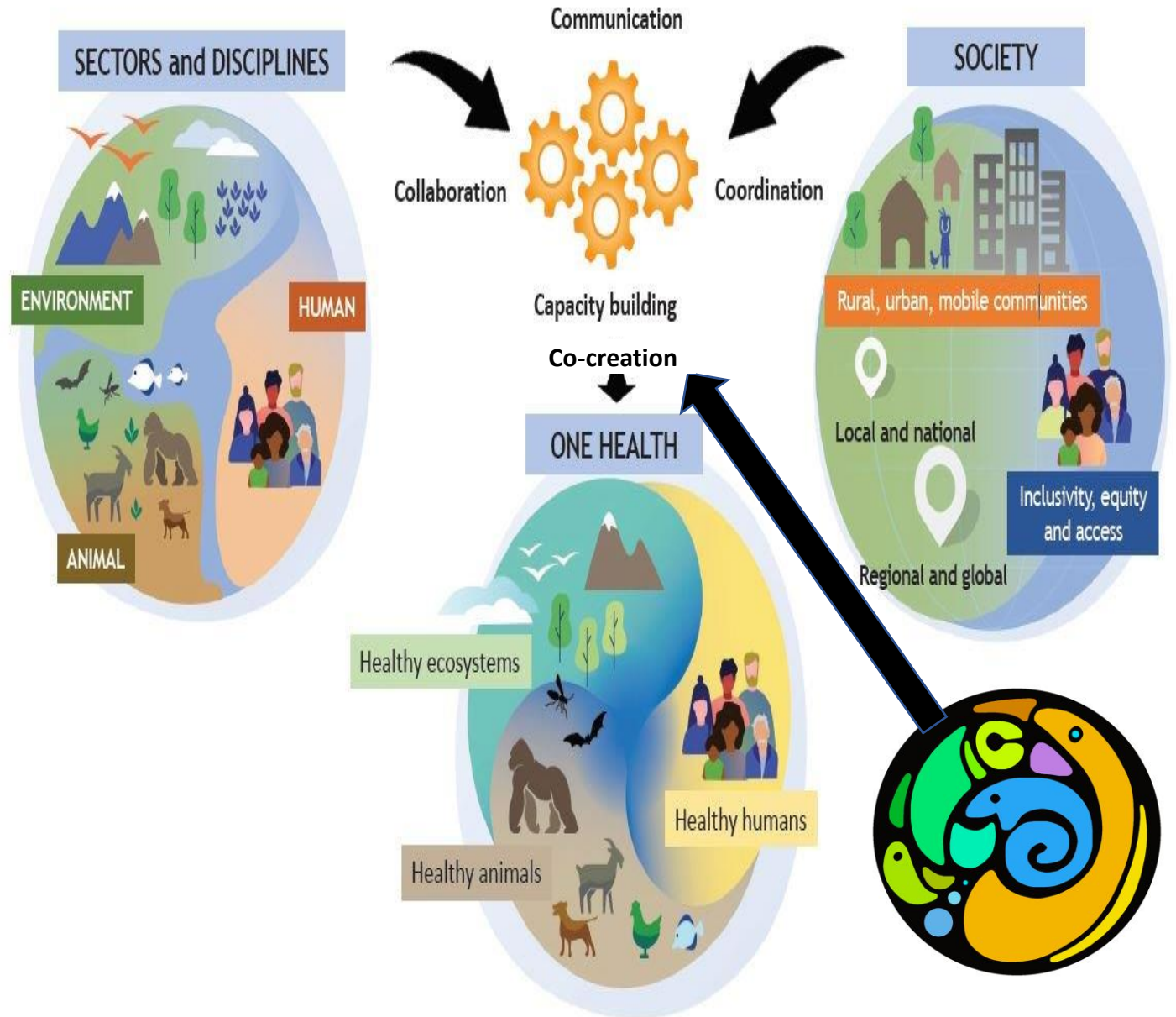
This original artwork was produced by Gilimbaa. Gilimbaa is an Indigenous creative agency accredited by Supply Nation.

<https://nacchocommunique.com/wp-content/uploads/2016/11/natsihp-health-plan.pdf>





SUSTAINABLE DEVELOPMENT GOALS

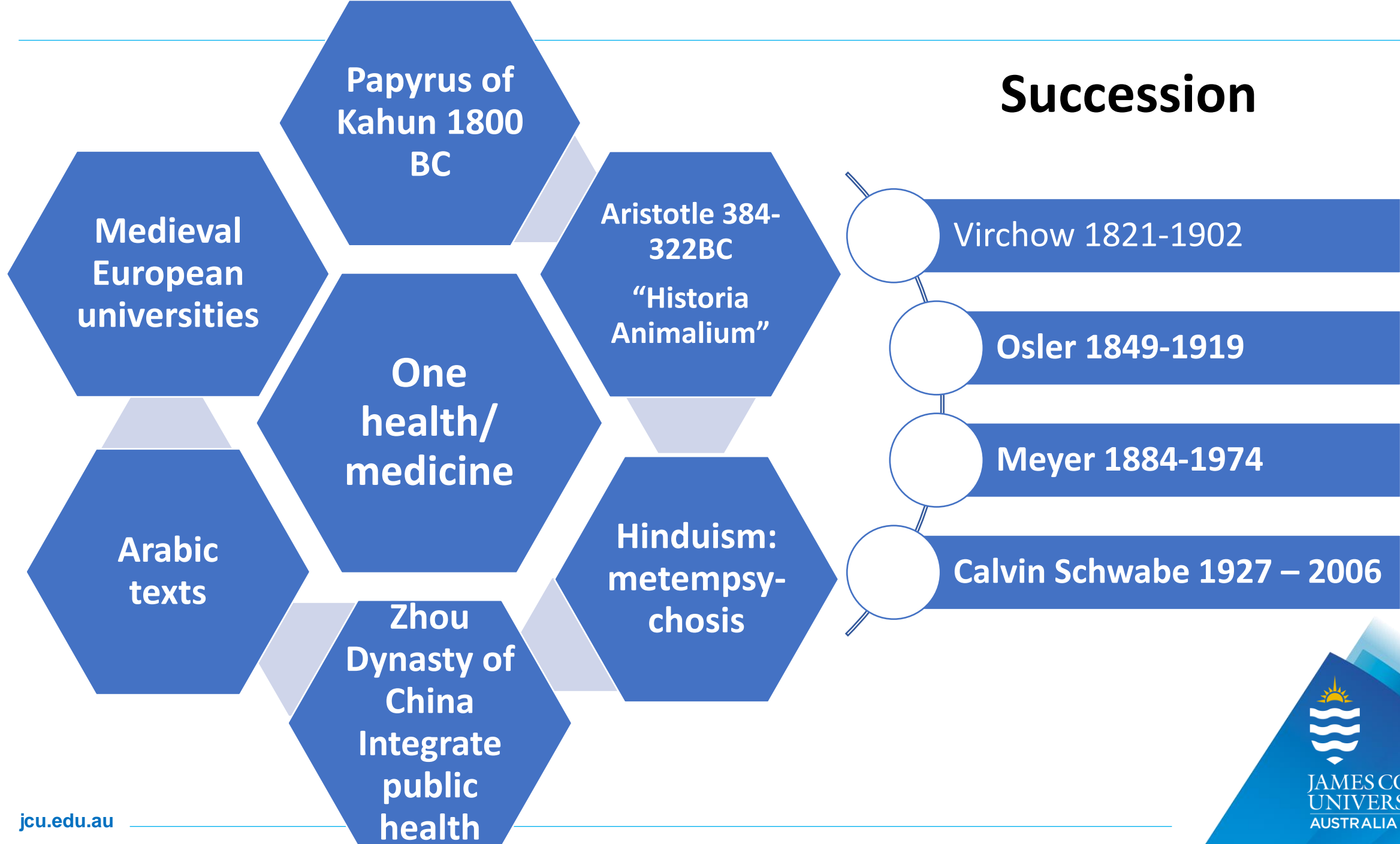


Successive Evolution of the Concept



<https://microscopeclarity.com/the-first-microscope-to-modern-microscopes-evolution-and-history-of-microscopes/>

Succession



2004

- Manhattan Principles :
One World One Health

2021

- OHHLEP1

2008

- Tripartite

2022

- Quadripartite
- Joint Plan of Action
2022-2026

2012

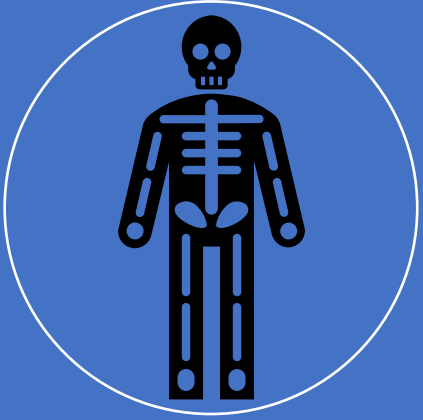
- Davos : Economics of
OH
- 1st OH Congress (Melb)

2024

- OHHLEP 2

Meaning of health

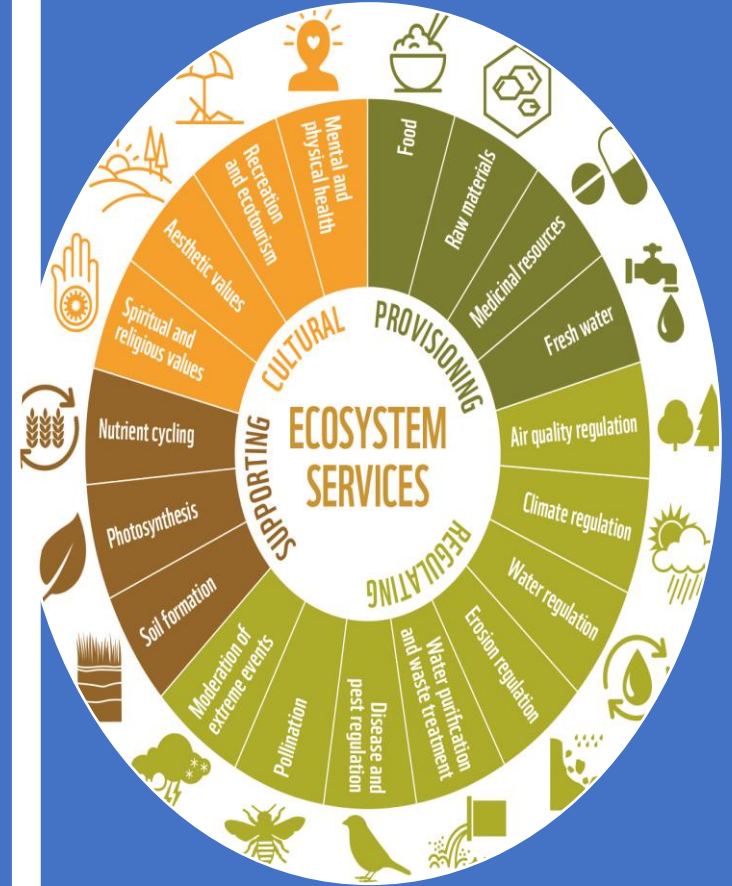
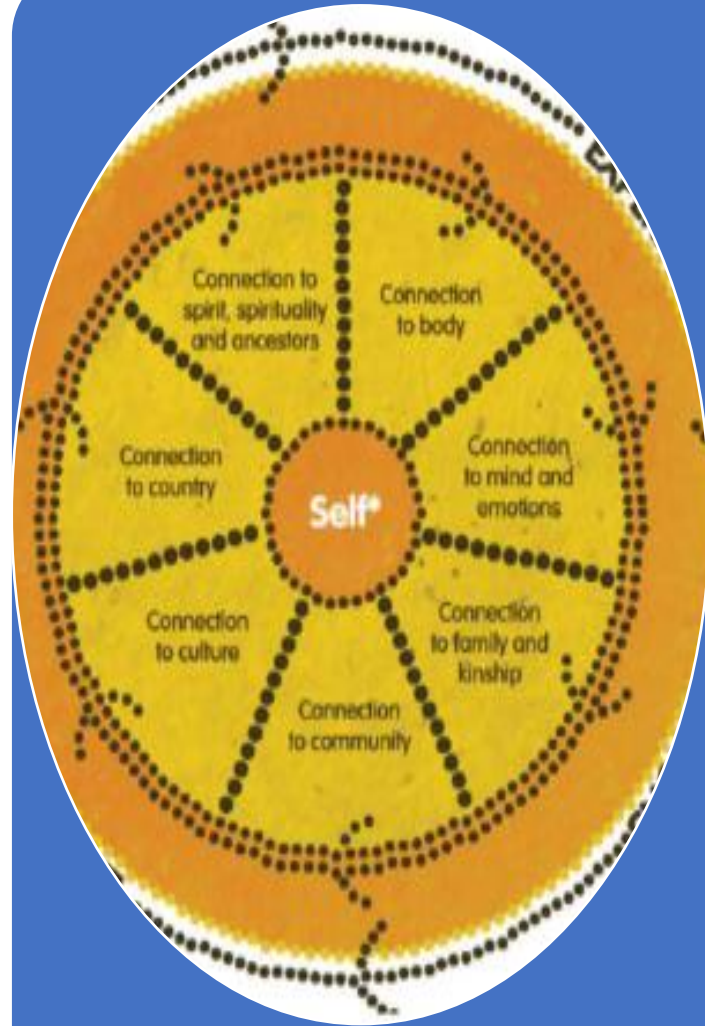




Health is a state of complete physical, mental, (Cultural) and social well-being and not merely the absence of disease or infirmity.

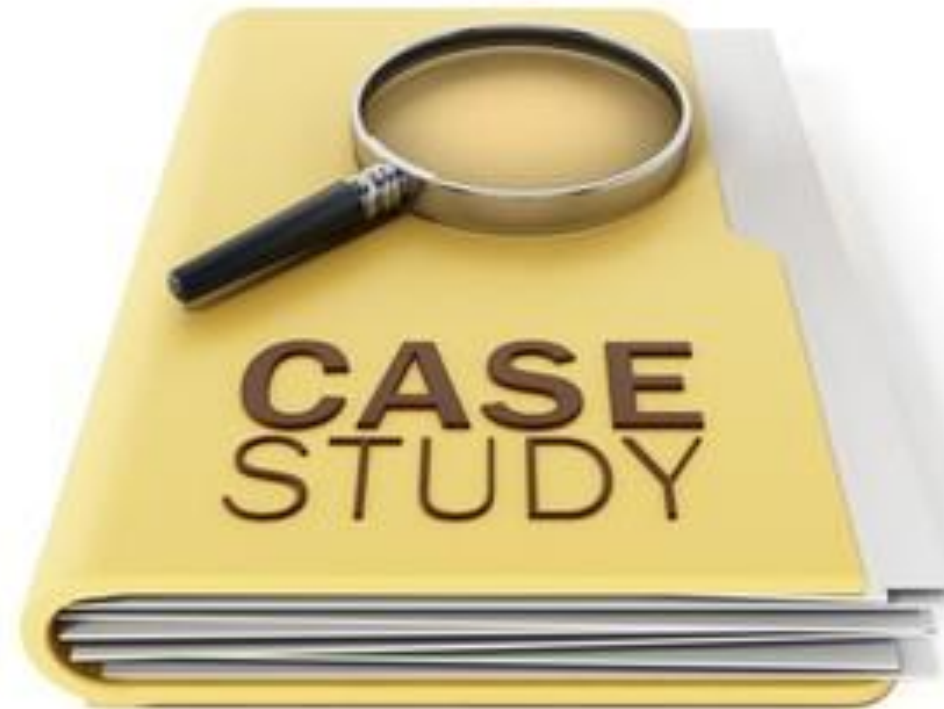


Biology normal,; homeostasis, productive, behaves as expected



Health is defined as

Case Studies



shutterstock.com • 430803139



Figure 1. ———

The relationships at the
wildlife-livelihoods-health nexus



Livelihoods of rural
communities and
Indigenous Peoples



One Health: humans +
domestic and wild animals
+ environment

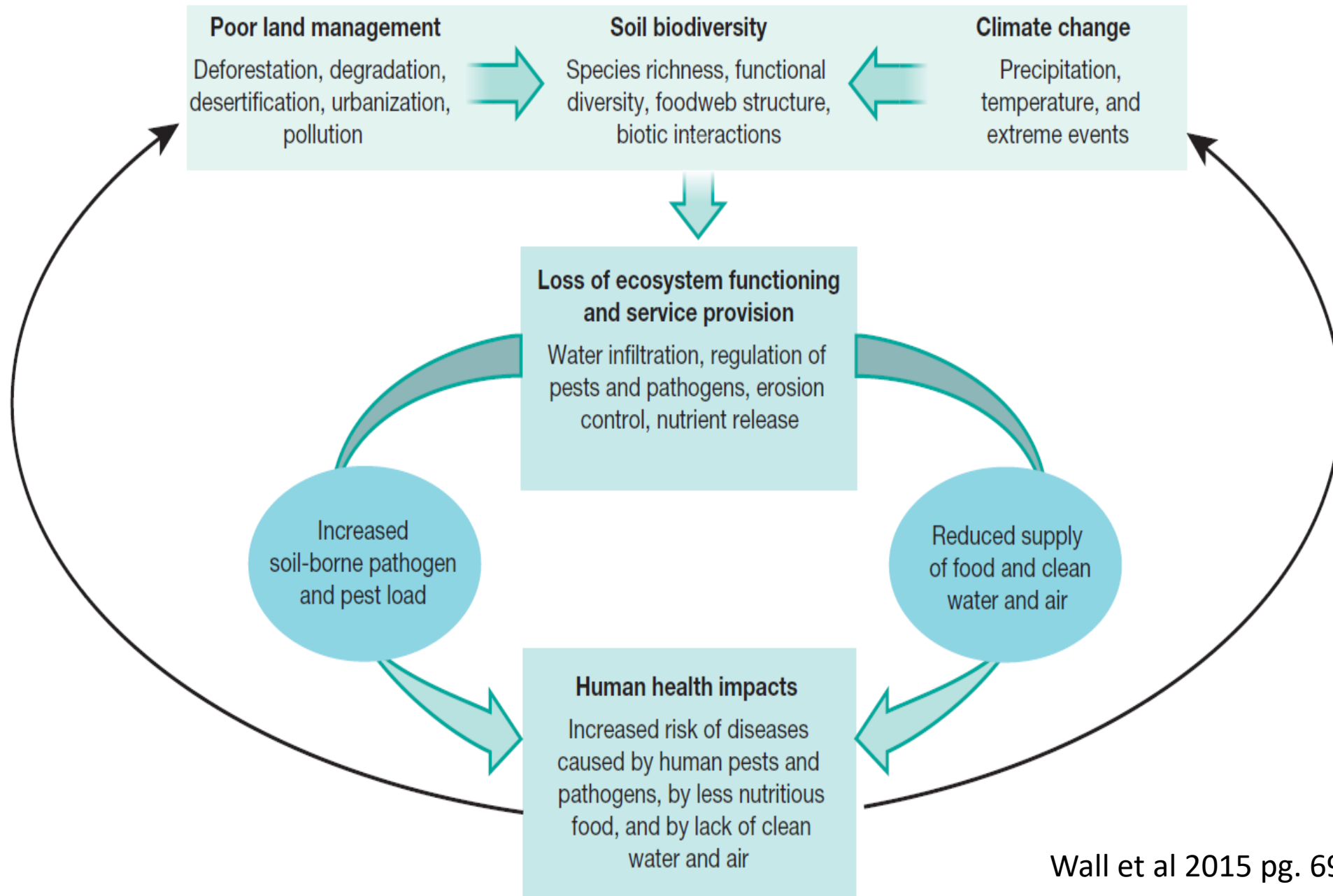
Sustainable use
and management
of wildlife



1 NO
POVERTY



JAMES COOK
UNIVERSITY
AUSTRALIA





Credit: Micol Fascendini



Credit: Micol Fascendini

Healthy Parks Healthy People: the state of the evidence 2015

Prepared for Parks Victoria by Mardie Townsend, Claire Henderson-Wilson,
Elyse Warner and Lauren Weiss, School of Health and Social Development,
Deakin University



They concluded that there is strong justification for the promotion of, and investment in, green spaces as health promotion settings

https://www.iucn.org/sites/dev/files/content/documents/hphp_state-evidence2015.pdf

- Chooks making changes in the lives of older people, helping them fight depression, dementia and anxiety

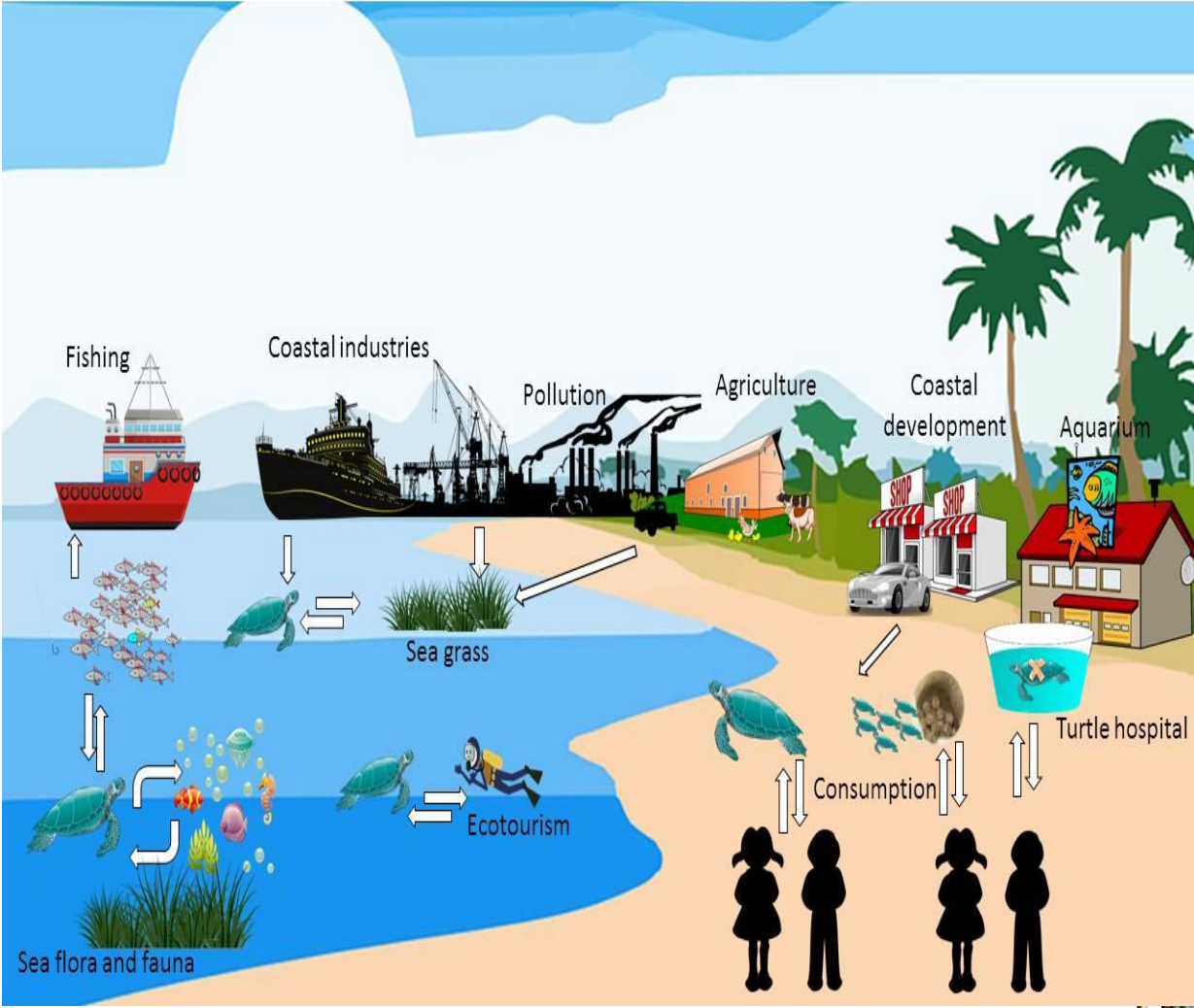


Whiddon group of aged care facilities in NSW

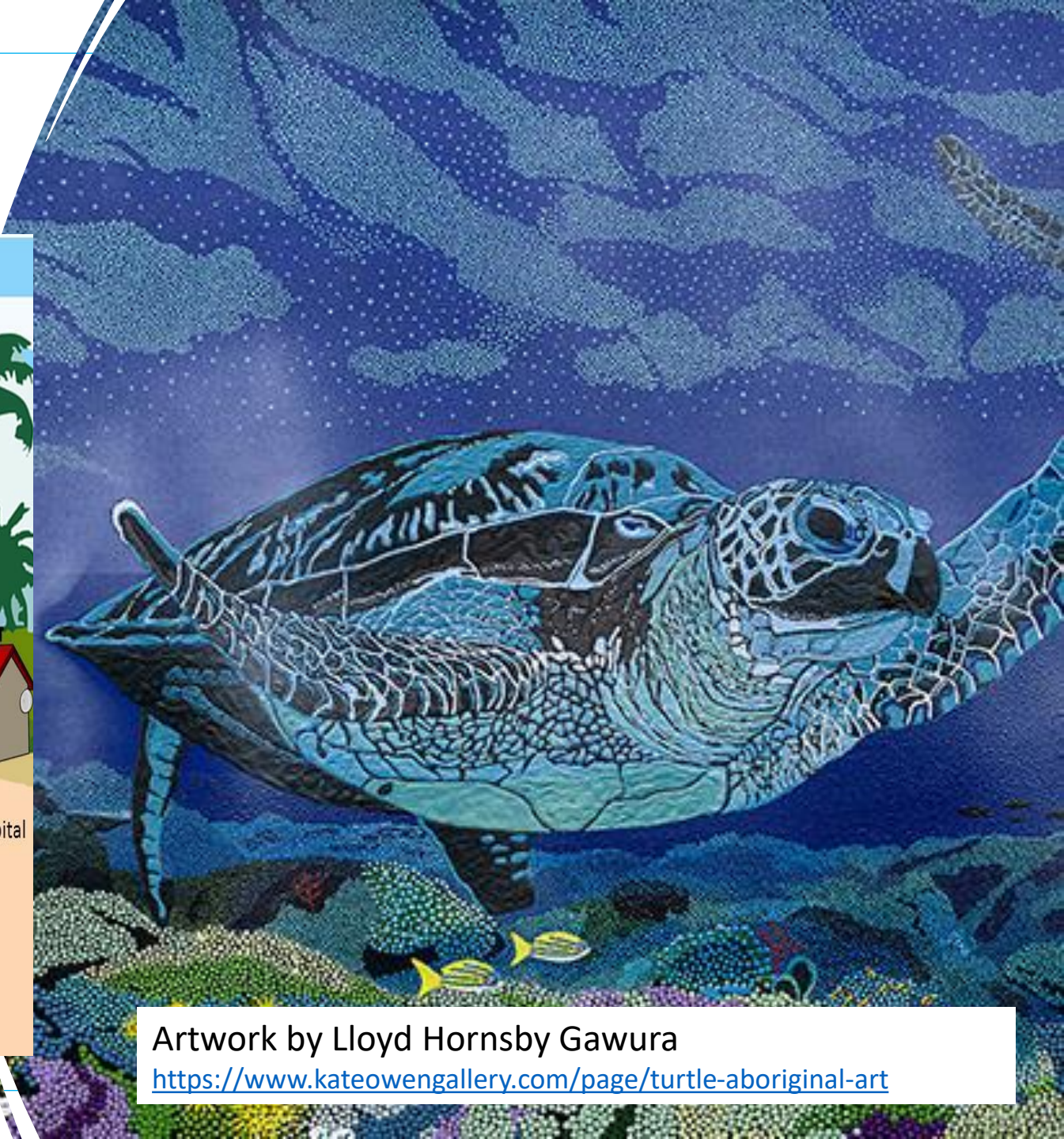
<https://www.youtube.com/watch?v=mqWI2LfOM6o>

Non-communicable diseases

- Emotional bond from humans to their companion animals -> positive effects on human mental health
- Animal-assisted therapy -> reduction in depression, anxiety, loneliness, autism-spectrum symptoms, medical difficulties and behavioural issues
- Companion animals reduce risks of CVD
- Presence of a pet was the strongest social predictor of survival post heart attack



Mashkour et al 2020.



Artwork by Lloyd Hornsby Gawura
<https://www.kateowengallery.com/page/turtle-aboriginal-art>



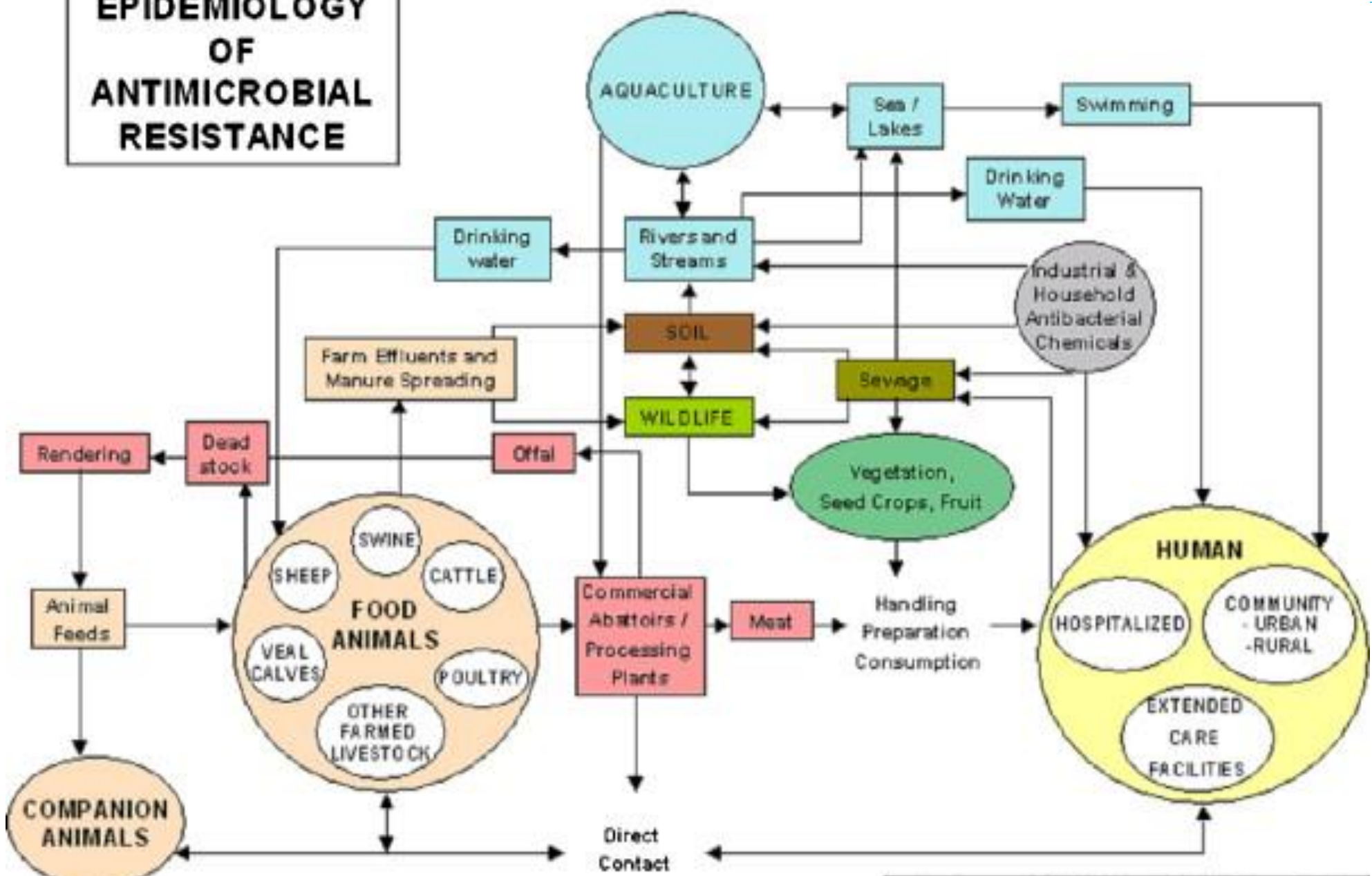
jcu.edu.au Sylvia Campion "Bush Pig"

<https://outback-aboriginal-art.com/?p=1257>

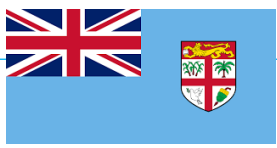


JAMES COOK
UNIVERSITY
AUSTRALIA

EPIDEMIOLOGY OF ANTIMICROBIAL RESISTANCE



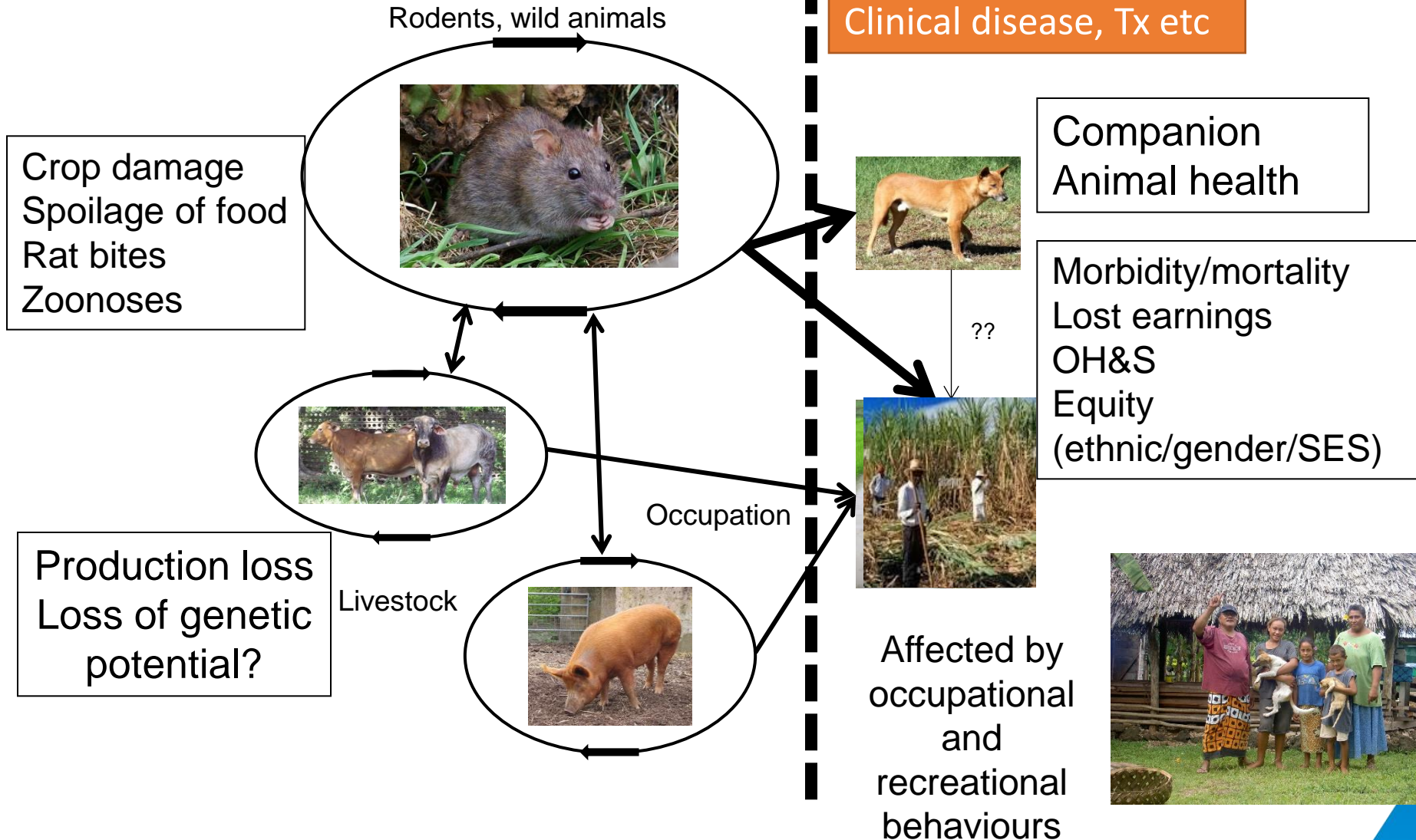
after Linton AH (1977), modified by Irwin RJ



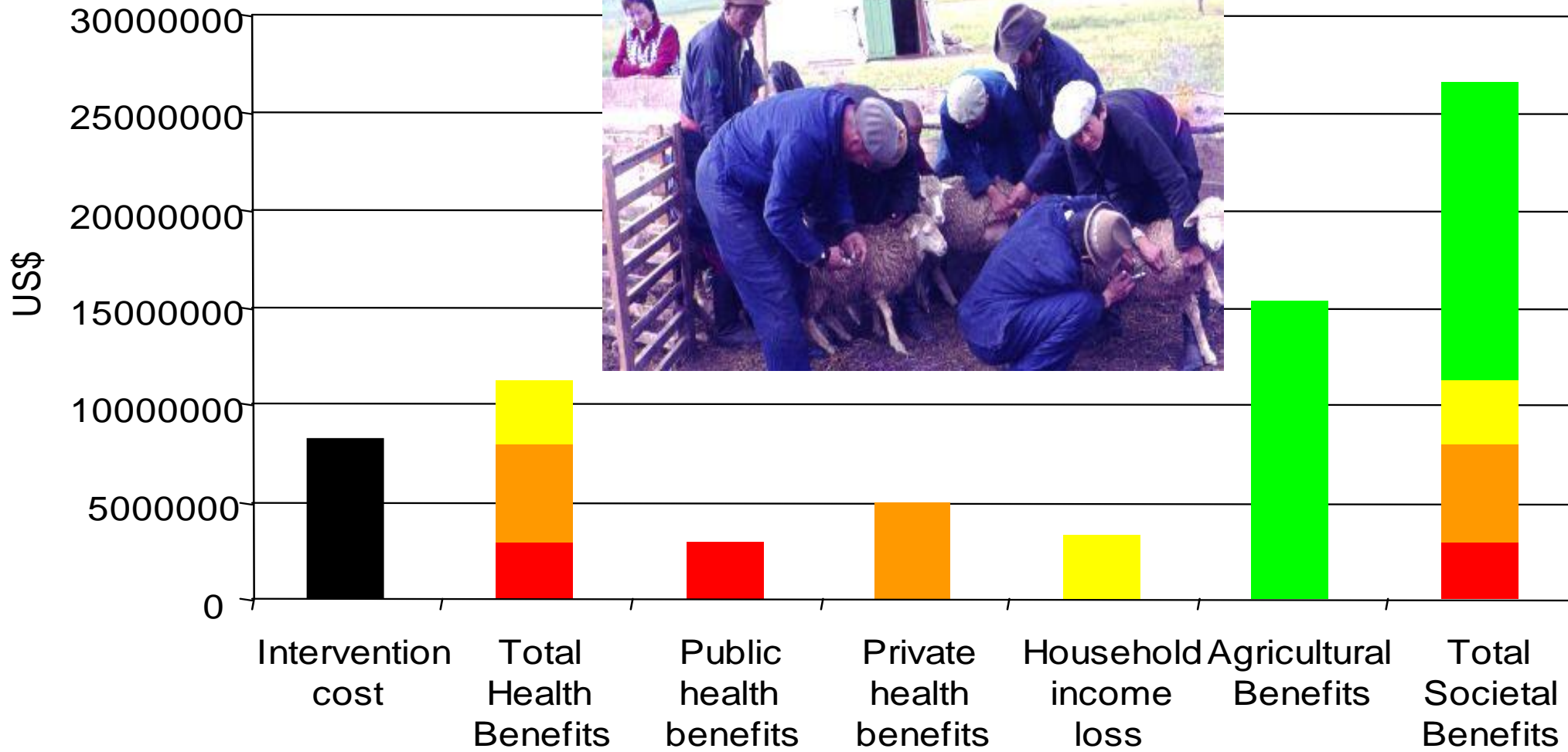
LEPTOSPIROSIS

Endemic cycle:

Epidemic: Climate, Environment: Mud, water, flooding



Benefits and costs of animal brucellosis mass vaccination



Roth F, et al

In summary



One health approach supports sustainable development and the health of all on the planet

A one health approach – solutions and sharing resources works for human health

We can all explore – professionally and personally how to support OH

Thank you Questions?



<https://www.istockphoto.com/photo/glowing-earth-globe-on-soil-with-butterfly-in-the-nature-world-environment-and-save-gm1176792770-328260055?searchscope=image%2Cfilmjcu.edu.au>

maxine.whittaker@jcu.edu.au

ANNUAL
one health
DAY
november 3
Promoting efforts around the world to bring together
all human, animal, and environmental health disciplines

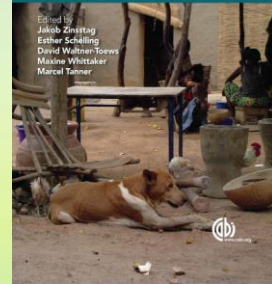


✓ check www.onehealthday.org for more information

One Health

The Theory and Practice
of Integrated Health
Approaches

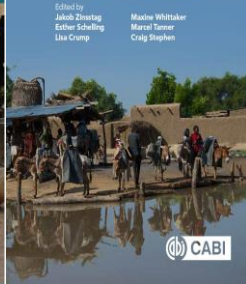
Edited by
Jakob Zinsstag
Esther Schelling
David Mwalimu Torero
Maxine Whittaker
Marcel Tanner



One Health

2nd Edition
The Theory and Practice of
Integrated Health Approaches

Edited by
Jakob Zinsstag
Esther Schelling
Lisa Crump
Maxine Whittaker
Marcel Tanner
Craig Stephen



<https://www.cabi.org/products-and-services/one-health-resources-cabi/>



JAMES COOK
UNIVERSITY
AUSTRALIA

References

- Danielsen, S., Schelling, E. with contribution from Whittaker, M. (2020) Reaping One Health Benefits Chapter 14 pgs 170-183 in Zinsstag, J., Schelling, E., Crump, L., **Whittaker, M.**, Tanner, M. and Stephen, C., (eds.) 2020 *One Health: the theory and practice of integrated health approaches*. 2nd Edition CAB International, Wallingford, UK,
- Doran JW, Sarrantonio M, Liebig MA. (1996) Soil health and sustainability. *Adv Agron.*;56:1–54.
- Engel, K. & Ziegler S. 2020. Pandora’s Box. A report on the human zoonotic disease risk in Southeast Asia with a focus on wildlife markets. WWF Deutschland. <https://www.wwf.de/fileadmin/fm-wwf/Publikationen-PDF/WWF-Report-Human-Zoonotic-Disease-Risk-in-Southeast-Asia-with-a-Focus-on-Wildlife-Markets.pdf>
- FAO. 2024. The wildlife-livelihoods-health nexus: challenges and priorities in Asia and the Pacific. Bangkok: Food and Agricultural Organisation
- Hartig, T. (2008). Green space, psychological restoration, and health inequality. *The Lancet*, 372(9650), 1614–1615. [https://doi.org/10.1016/S0140-6736\(08\)61669-4](https://doi.org/10.1016/S0140-6736(08)61669-4)
- <https://openknowledge.worldbank.org/handle/10986/11892>
- https://www.onehealthcommission.org/en/why_one_health
[/jcu.edu.au](http://jcu.edu.au)
- <https://www.who.int/news/item/01-12-2021-tripartite-and-unesep-support-ohhlep-s-definition-of-one-health>
- Jones, K.E., Patel, N.G., Levy, M.A., Storeygard, A., Balk, D., Gittleman, J.L. & Daszak, P. 2008. Global trends in emerging infectious diseases. *Nature*. 451(7181): 990–993.
- Lerner H, Berg C. A Comparison of Three Holistic Approaches to Health: One Health, EcoHealth, and Planetary Health. *Front Vet Sci*. 2017 Sep 29;4:163. doi: 10.3389/fvets.2017.00163
- Mackenzie JS, Jeggo M. The One Health Approach-Why Is It So Important? *Trop Med Infect Dis*. 2019 May 31;4(2):88. doi: 10.3390/tropicalmed4020088.
- Mashkour N, et al . Disease risk analysis in sea turtles: A baseline study to inform conservation efforts. *PLoS One*. 2020 Oct 23;15(10):e0230760. doi: 10.1371/journal.pone.0230760. PMID: 33095793; PMCID: PMC7584443
- Raina, P et al 1999 Influence of companion animals on the physical and psychological health of older people: an analysis of a 1 year longitudinal study *Jnl Amer Geriatric society* 47:323-9

References

- Roth F, et al Human health benefits from livestock vaccination for brucellosis: case study. Bull World Health Organ 2003;81:867-876
- Schelling E et al 2007 Human and Animal Vaccination Delivery to Remote Nomadic Families, Chad [Emerg Infect Dis](#). 2007 Mar; 13(3): 373–379. doi: [10.3201/eid1303.060391](#)
- Singh, Brajesh K., Yan, Zhen Zhen, Whittaker, Maxine, Vargas, Ronald, and Abdelfattah, Ahmed (2023) [Soil microbiomes must be explicitly included in One Health policy](#). *Nature Microbiology*, 8. pp. 1367-1372.
- Telethon Kids <https://www.telethonkids.org.au/globalassets/media/documents/aboriginal-health/working-together-second-edition/wt-part-1-chapt-4-final.pdf> Page 57
- Townsend M et al 2015 Healthy Parks Healthy People: the state of the evidence 2015 http://parkweb.vic.gov.au/_data/assets/pdf_file/0003/672582/HPHP_state-of-the-evidence_2015.pdf
- Turner, D 2015 Non-communicable diseases: how can companion animals help in connection with coronary heart disease, obesity, diabetes, and depression in Zinsstag, J et al (eds) One health: the theory and practice of integrated health approaches pgs 222-9 CABI: Wellington
- Wall, D., Nielsen, U., Six, J. (2015) Soil biodiversity and human health *Nature* 528:69-76
- WHO 1946 *Preamble to the Constitution of WHO as adopted by the International Health Conference, New York, 19 June - 22 July 1946; signed on 22 July 1946 by the representatives of 61 States (Official Records of WHO, no. 2, p. 100) and entered into force on 7 April 1948. The definition has not been amended since 1946.*
- Woo, J., Tang, N., Suen, E., et al 2009 Green space, psychological restoration, and telomere length. *Lancet* 373: 299-300
- Woolhouse, M., & Gowtage-Sequeria, S. 2005. Host Range and Emerging and Reemerging Pathogens. *Emerging Infectious Diseases*, 11(12): 1842-1847. <https://doi.org/10.3201/eid1112.050997>