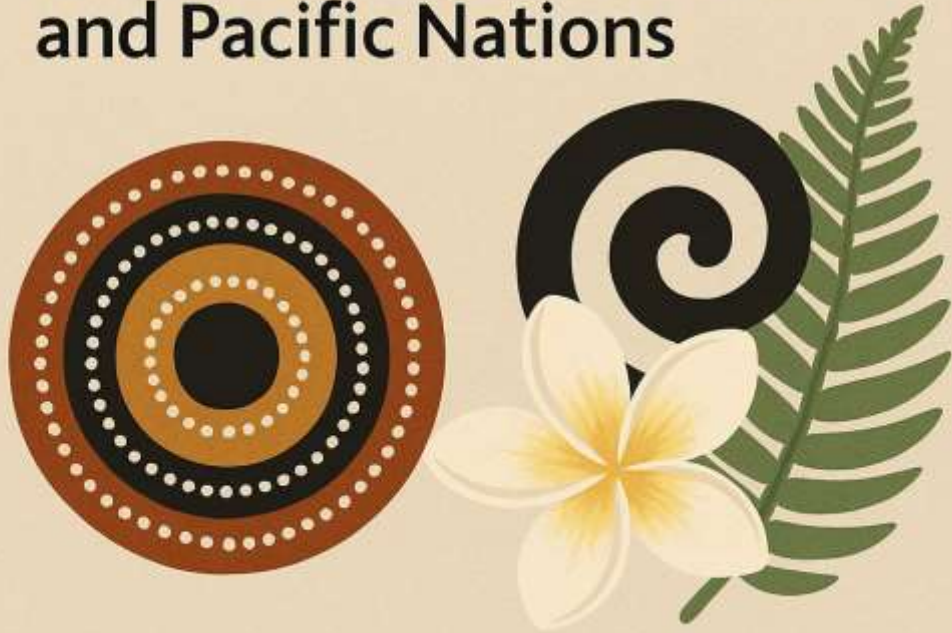


ACIPC/GOARN Partnership Update

Peta-Anne Zimmerman

17 November 2025

We acknowledge the
Traditional Lands of the
Aboriginal and Torres Strait
Islander Peoples, Māori,
and Pacific Nations



I acknowledge the Muwinina
people,
Traditional Custodians of this
land and pay respect to Elders
past and present.

I extend that respect to Māori
and Pacific Island communities
and their enduring connection to
place, story, and culture.

May we engage in *talanoa* with
openness, care, and shared
learning.

About GOARN



About GOARN

GOARN Purpose

GOARN enables rapid detection and response to international public health emergencies.

Global Network

The network includes over 340 institutions worldwide such as health agencies and labs.

Governance Structure

A Steering Committee of 21 partners oversees GOARN's strategic planning and evaluation.

Operational Coordination

The Operational Support Team coordinates missions and daily network functions from WHO offices.



Core Functions of GOARN

Alert and Risk Assessment

Detecting and verifying health emergencies worldwide is crucial for timely responses.

Rapid Response Deployment

Multidisciplinary teams and resources are deployed within 48 hours to emergencies.

Capacity Strengthening

Training, simulations, and leadership development enhance outbreak management skills.

Operational Research

Research refines outbreak response strategies and improves tools continually.



GOARN Training Programs

Three-Tiered Training Structure

GOARN offers basic, advanced simulation, and leadership training tiers for outbreak responders.

Leadership Development

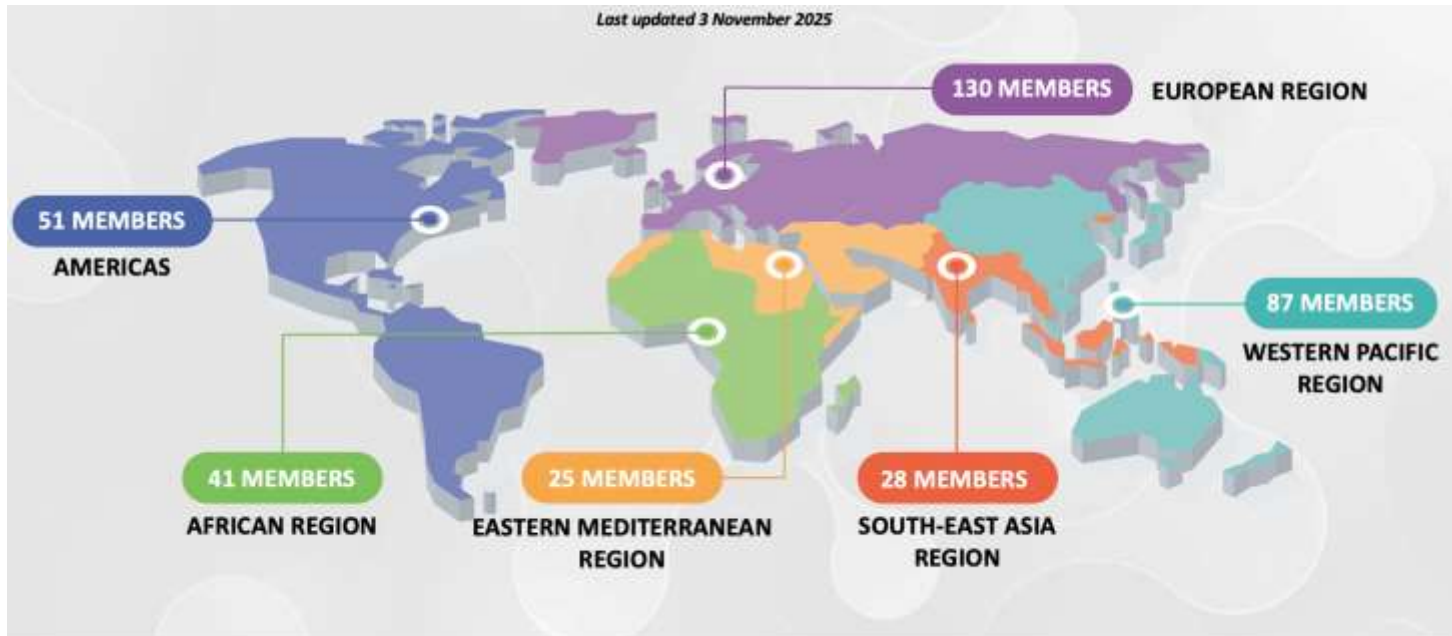
Leadership course emphasizes resilience, crisis decision-making, and strategic foresight skills.

Virtual Soft Skills Modules

Virtual modules teach communication, cultural diversity, and teamwork in stressful environments.

**Global reach and
strategic objectives**

Global Reach of GOARN



Extensive Global Network

GOARN partners span all WHO regions with significant membership in each area as of 2023.

Wide Regional Representation

Members include 44 in the Americas, 35 in Africa, 20 in Eastern Mediterranean, and more.

Key Partner Organizations

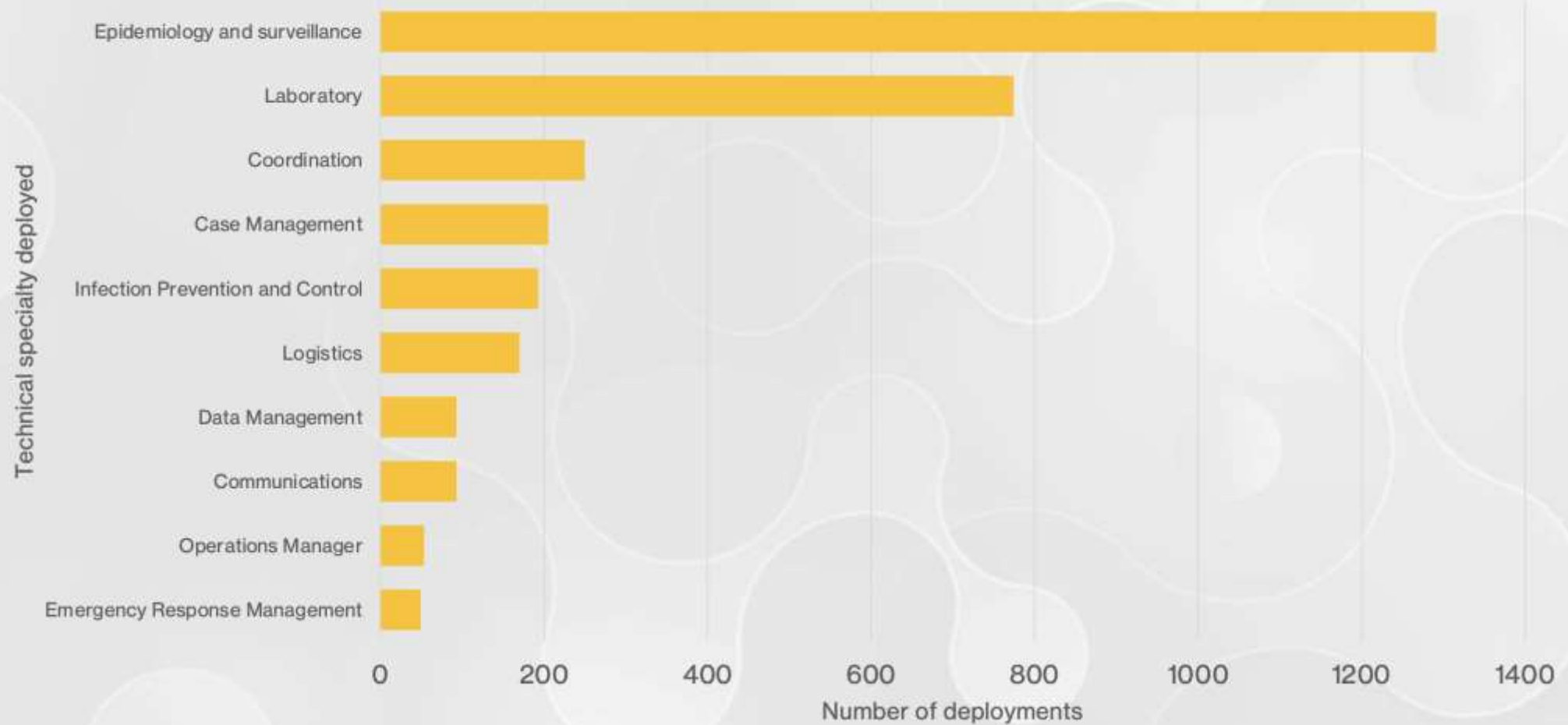
Includes WHO, CDC, Médecins Sans Frontières, Red Cross, and numerous technical and academic institutions.

Enhanced Response Capacity

Diversity of partners enables rapid and effective mobilization against public health threats.

REQUESTED TECHNICAL SPECIALTIES THROUGH GOARN

Deployment by role





Strategic Objectives of GOARN

Rapid Epidemic Detection

Detect epidemics quickly using international surveillance networks and data sharing.

Effective Emergency Response

Deploy expert teams and logistical support to respond promptly to health crises.

International Coordination

Coordinate efforts among governments, NGOs, and private sectors for unified action.

Capacity Building

Strengthen local health systems and workforce through training and capacity building.

GOARN Partnership Overview

25 GOARN Partners in Australia

Institution name

Asia Pacific Consortium of Veterinary Epidemiology (APCOVE)

Australasian College for Infection Prevention and Control (ACIPC), formerly AICA

Australian and New Zealand Intensive Care Society (ANZICS)

Australian National Centre for Immunisation Research and Surveillance (NCIRS)

Burnet Institute for Medical Research and Public Health

Clinical Excellence Commission (CEC) NSW Health, Australia

Collaborative for the Advancement of Infection Prevention and Control (CAIPC)

College of Public Health, Medical and Veterinary Sciences, James Cook University

CSIRO Australian Centre for Disease Preparedness

Doctors Without Borders - Australia (MSF)

Health Emergency Branch, Department of Health and Aged Care

Hunter New England Health

Indo-Pacific Centre for Health Security, Department of Foreign Affairs and Trade

Institute for Glycomics - Griffith University, Gold Coast Campus, Queensland

National Centre for Epidemiology and Population Health (NCEPH), The Australian National University (ANU)

National Critical Care and Trauma Response Centre (NCCTRC)

PathWest Laboratory Medicine WA

Queensland Infection Prevention and Control Unit (QIPCU), Queensland Health

School of Population Health, UNSW Medicine

The Peter Doherty Institute for Infection and Immunity (Doherty Institute)

The University of New South Wales, Sydney

The University of Newcastle (UON), Australia

The University of Western Australia

University of Sydney Institute for Infectious Diseases

Westmead Hospital

Strategic Collaboration with WHO's GOARN



ACIPC and WHO Partnership

ACIPC partners with WHO's GOARN, a network of over 340 global institutions.

Multidisciplinary Contributions

ACIPC contributes expertise in IPC, epidemiology, immunisation, and other health fields.

Enhanced Global Engagement

The partnership boosts member engagement in global health security and outbreak response.

Leadership through Focal Point Role

Dr Zimmerman volunteers as focal point, coordinating training and representing ACIPC globally.

**Rapid Response
Capacity**



Engagement in International Emergencies

Wide Emergency Engagement

ACIPC collaborated on various international public health crises including Mpox, dengue, cholera, and more.

Deployment Challenges

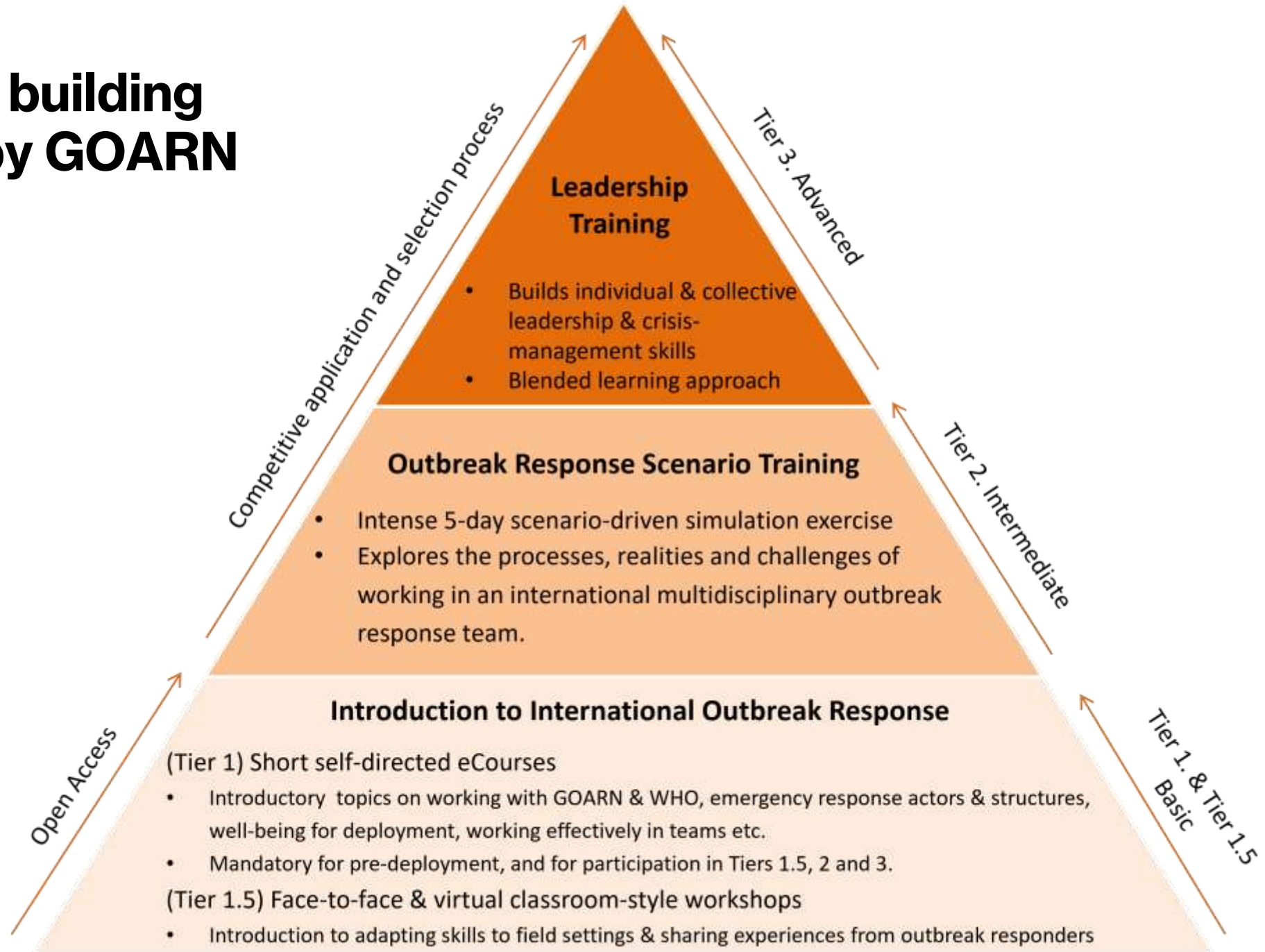
Five deployment applications were submitted but none proceeded due to limited epidemiology expertise within ACIPC.

Active Operations

Four ongoing operations include cholera responses and Mpox preparedness in African regions as of September 2025.

Capacity Strengthening

Capacity building offered by GOARN





Training and Simulation Initiatives

Virtual Training Workshop Success

GOARN Tier 1.5 workshop had over 40 participants with high satisfaction ratings.

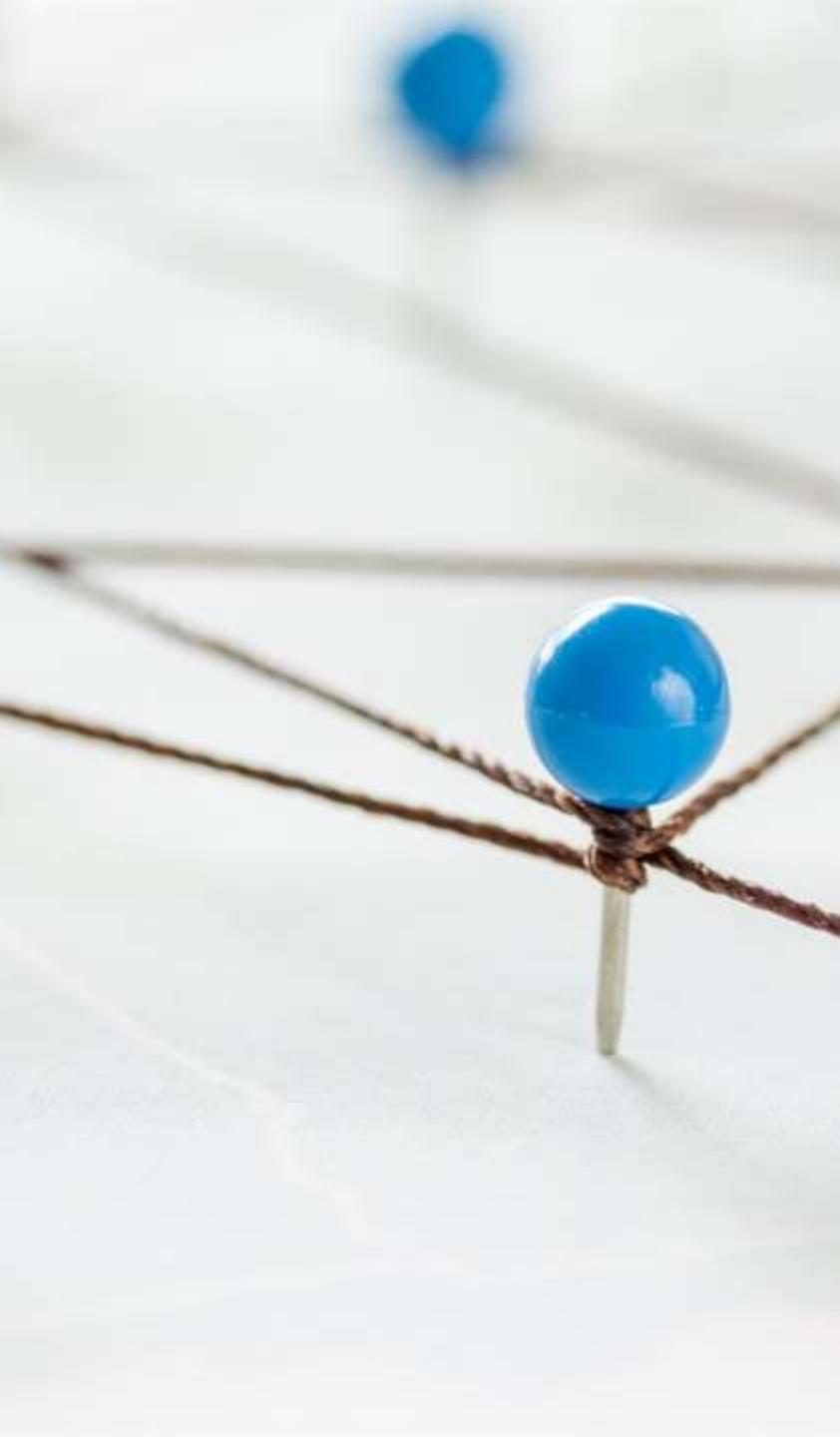
Senior Faculty in Simulation Training

ACIPC participated in Tier 2 simulation training in Australia and Sweden for complex field operations.

Webinar Series Launch

A four-part webinar series supports emerging partners with GOARN deployment readiness.

Strategic Representation



Leadership in Outbreak Coordination

Active Global Engagement

ACIPC actively participates in international outbreak forums and working groups to shape response strategies.

Participation in PICNet Meeting

ACIPC contributed to the 2025 PICNet Meeting held in Fiji to strengthen regional outbreak coordination.

GOARN Collaboration

Engagement with GOARN Research and Operations groups underlines ACIPC's partnership in global health security.

Strategic Planning for Future

Preparing for the GOARN Virtual Global Meeting of Partners to influence future outbreak management policies.

News, Meeting and Conference Report

Global Outbreak Alert and Response Network (GOARN) focal point engagement meeting with partners in Japan

Haruki Inada,^{1*} Sharon Sobue,^{1,2,3,4} Takashi Matsumoto,^{1,2} Tsuyoshi Ito,^{1,2} Kenji Saito,^{1,2} Hirotaka Hamao,^{1,2} Naohiko Nakano,^{1,2} Muga Ueda^{1,2} and Naoki Chikagawa^{1,2}
*Correspondence to: Takashi Matsumoto (email: matsumoto@wpr.who.int)

News, Meeting and Conference Report

Inaugural meeting of Global Outbreak Alert and Response Network partners from Australia

Caroline Deering,^{1*} Eith Christopherson,¹ Patricia Zimmerman^{1,2} and Sharon Sobue^{1,2}
*Correspondence to: Sharon Sobue (email: sobue@wpr.who.int)

Perspective

GOARN training: supporting field epidemiology trainees to upskill for public health emergency response

Yvonne Lewis,^{1,2*} Katelyn Allen,^{1,2} Tony Dewar^{1,2} and Amy Elizabeth Ferry^{1,2}
*Correspondence to: Yvonne Lewis (email: yvonne.lewis@wpr.who.int)

Lessons from the Field

One response: Global Outbreak Alert and Response Network supporting the COVID-19 response, Kiribati

Lucy Luthi,^{1*} Margaret Irving,¹ Sarah Tizabi Raufu¹, Helen Mumbuki¹, Wendy Swales^{1,2}, Sharon Sobue^{1,2,3} and Patricia Zimmerman^{1,2}
*Correspondence to: Patricia Zimmerman (email: pzimmer@wpr.who.int)

Lessons from the Field

Global Outbreak Alert and Response Network deployments during the COVID-19 pandemic, WHO Western Pacific Region

Sharon Sobue,^{1*} Simon Brinkworth,^{1,2} Clarissa Lo^{1,2} and Jocelyn M Bessard^{1,2}
*Correspondence to: Sharon Sobue (email: sobue@wpr.who.int)

Original Research

Outbreak response capacity of the Global Outbreak Alert and Response Network across WHO's South-East Asia and Western Pacific regions

Amy Elizabeth Ferry,^{1*} Sue Campbell,¹ Stefan Thakurak¹, Purita Pradee Mawitip¹ and Sharon Sobue^{1,2}
*Correspondence to: Amy Elizabeth Ferry (email: amy@wpr.who.int)

Perspective

Beyond deployments: Australia's strategic contributions to the Global Outbreak Alert and Response Network

Sharon Sobue,^{1*} Eith Christopherson¹ and Stephanie Willinger¹
*Correspondence to: Sharon Sobue (email: sobue@wpr.who.int)

Perspective

Scenario-based outbreak response training: perspectives from a multidisciplinary trainee team

Fara Munkel,¹ Eileen Weiss,¹ Rebecca Gray,² Debra De Ara,¹ Abdulmalik Amin Faisal,¹ Humberto Jimna,¹ Samad Raj Baid,¹ Sharon Sobue^{1,2,3} and Jocelyn M Bessard^{1,2}
*Correspondence to: Jocelyn M Bessard (email: jocelyn.bessard@wpr.who.int)



Member Development and Opportunities

Professional Growth through GOARN



WHO-led Training Access

Members gain access to WHO-led training and simulation programs enhancing outbreak response skills.

International Deployment Eligibility

Members can be deployed to international outbreak responses, gaining valuable field experience.

Global Research Participation

Participation in global research and coordination forums strengthens members' professional networks.

GOARN Fellowship Program

The Berlin Fellowship supports skill development in outbreak coordination, research, and deployment.

Future Goals

Strategic Priorities for 2026



Expand Member Eligibility

ACIPC aims to broaden member eligibility and improve readiness for deployment globally.

Increase IPC Representation

Focus on increasing infection prevention control presence in global health operations.

Formalise Regional Leadership

Establish clear regional leadership roles to guide local outbreak response efforts.

Promote Research Contributions

Advance ACIPC-led research within GOARN to support outbreak preparedness and response.