



2025 ACIPC International
Conference

Infection Prevention and Control by Design: Embedding AusHFG IPC Frameworks in Healthcare Infrastructure

Marilyn Mandigma

AusHFG Health Facility Planning Lead



The Australasian Health Facility Guidelines (AusHFG) are developed in collaboration with stakeholders across Australia and New Zealand.



Acknowledgement of Country

We acknowledge the Aboriginal people and Torres Strait Islander people as traditional owners and continuing custodians of the land throughout Australia and the Torres Strait Islands.

We acknowledge their connection to land, sea and community and pay respects to Elders past and present.

Acknowledgement of Te Tiriti o Waitangi

Te Tiriti o Waitangi obligations are considered in developing the AusHFG resources.

Australasian Health Facility Guidelines

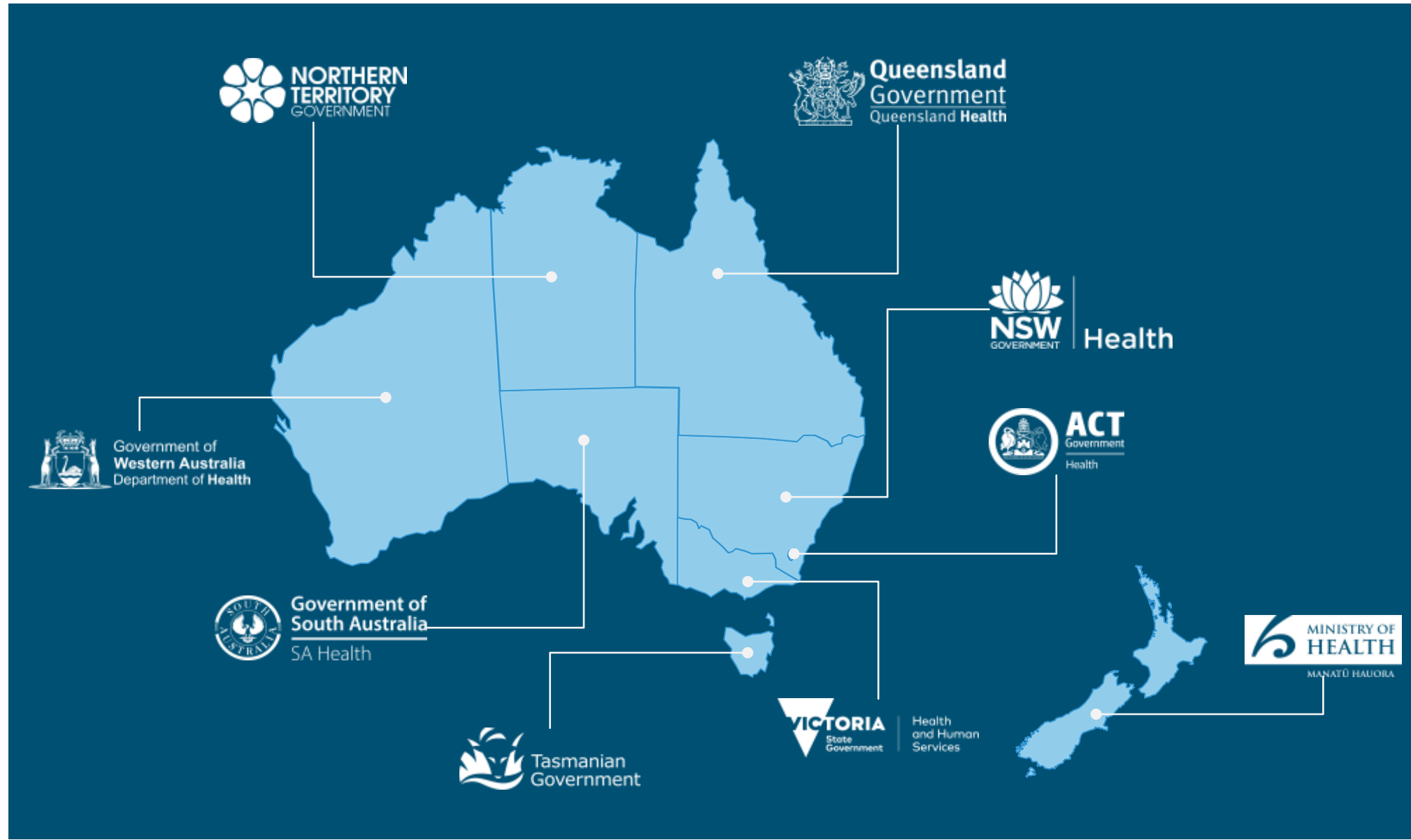
www.healthfacilityguidelines.com.au



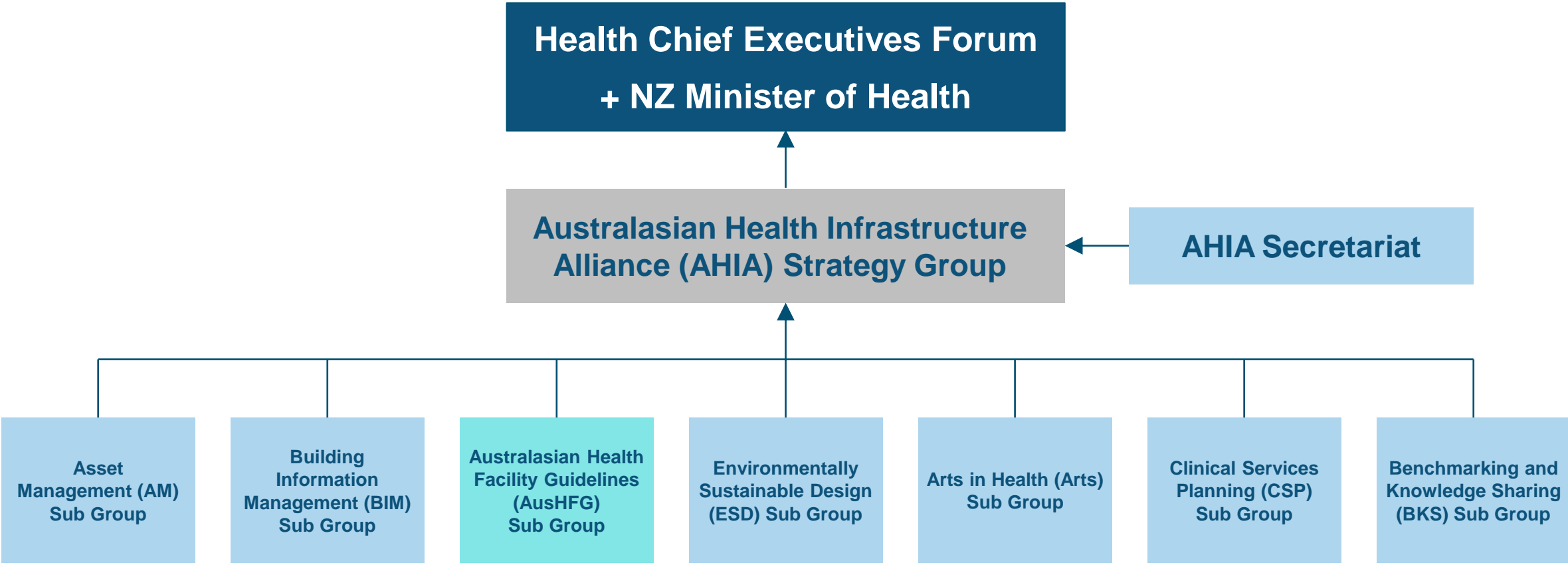
Australasian Health Infrastructure Alliance (AHIA)



Australasian Health Infrastructure Alliance



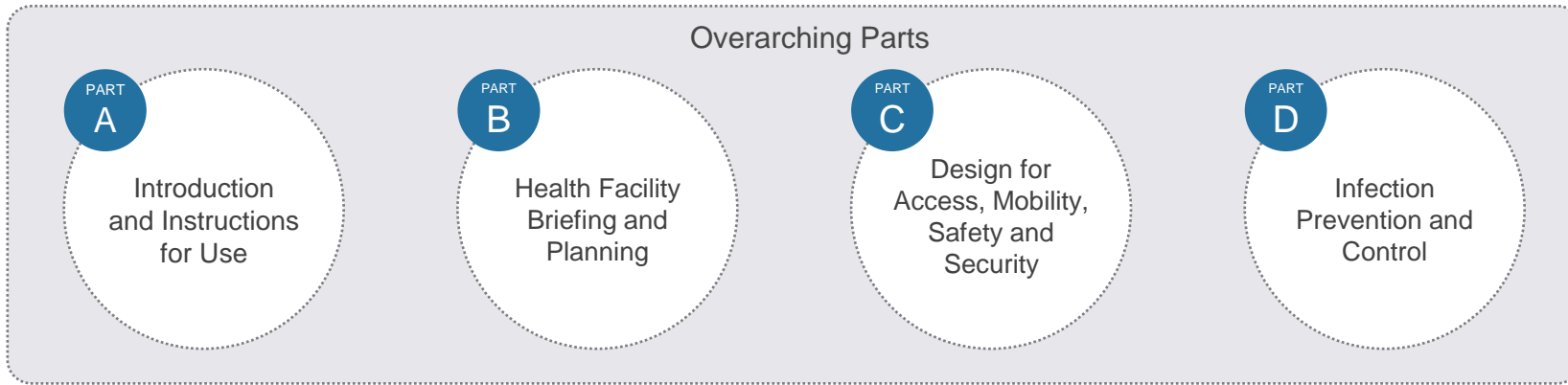
Australasian Health Infrastructure Alliance



Australasian Health Facility Guidelines (AusHFG)



AusHFG Structure



Health Planning Units (HPUs)



Guidance Document

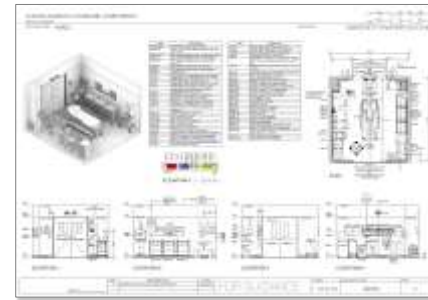


Schedule of Accommodation (SoA)

Standard Components



Room Data Sheet (RDS)



Room Layout Sheet (RLS)

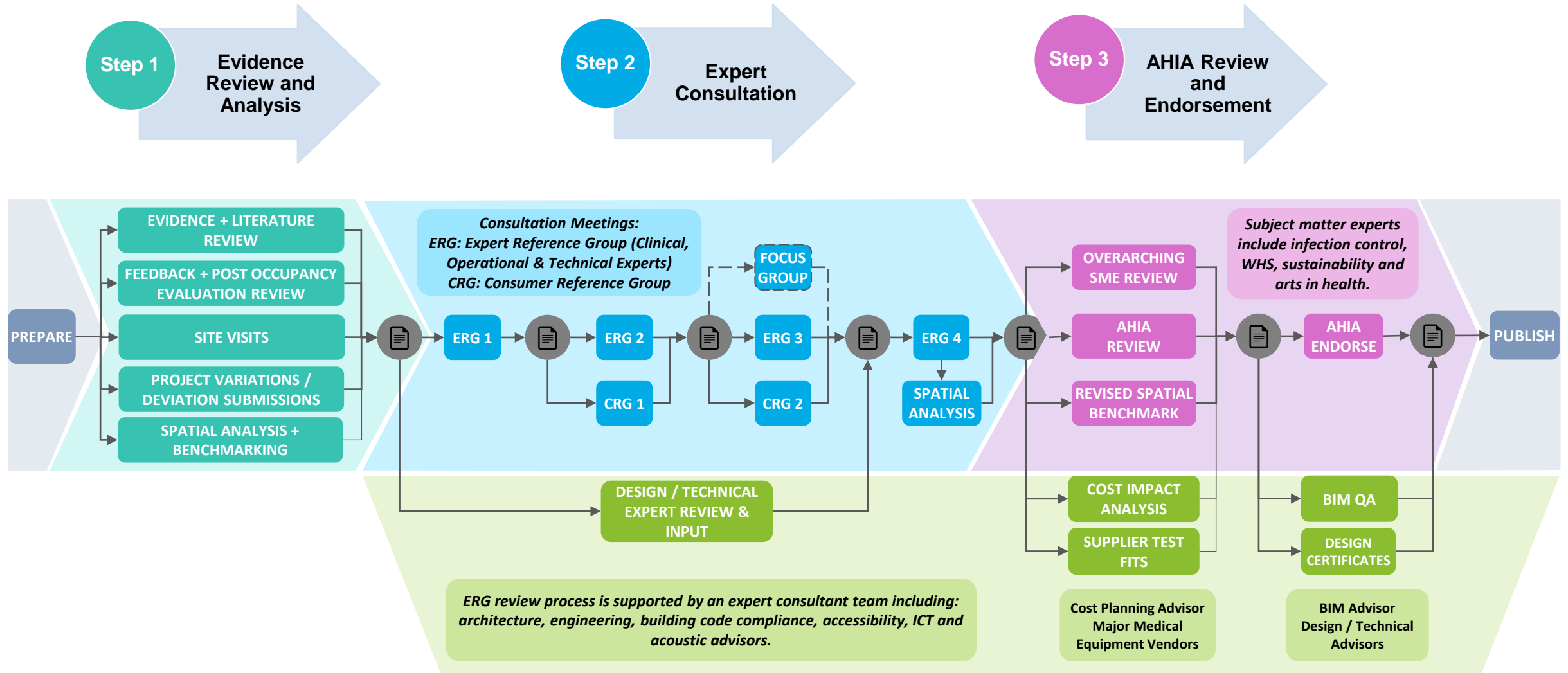
Other Resources

- **Project Resources:** Pandemic Preparedness, Isolation Room Design and Engineering Guidance and AusHFG Spatial Benchmarks, etc.
- **Design Guidance:** Doors
- **Arts and Culture:** Arts in Health Framework and Culturally Sensitive Planning and Design, etc.
- **BIM Resources:** Item Control Schedule, File for Import, Revit and IFC Models, etc
- **Asset Management Resources**
- **Environmentally Sustainable Design Resources:** Electrification, Electric Vehicle Infrastructure, and Climate Resilience and Adaptation.

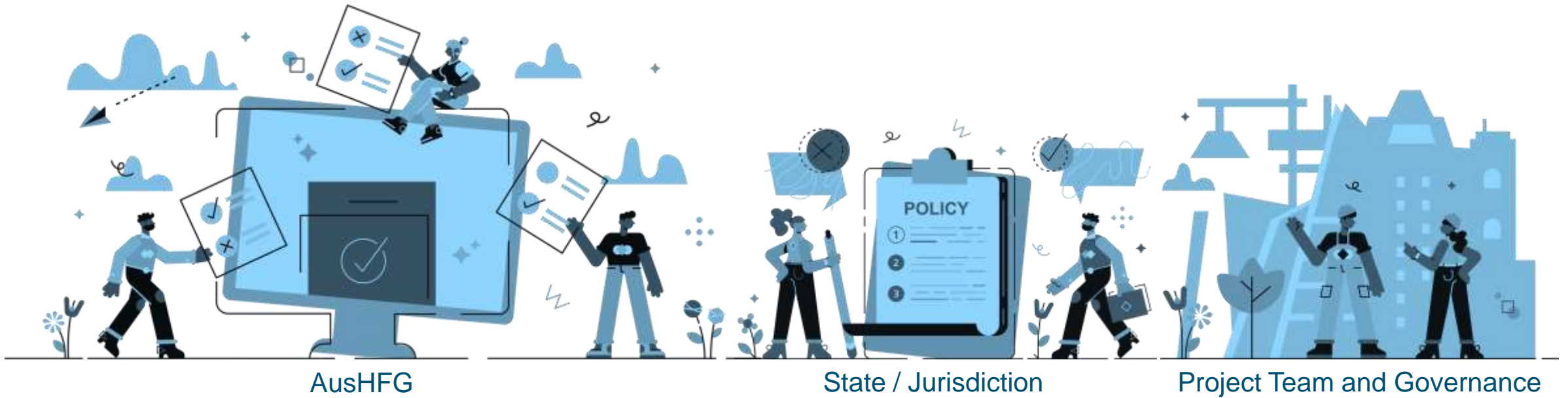
AusHFG Review Process



AusHFG Review Process



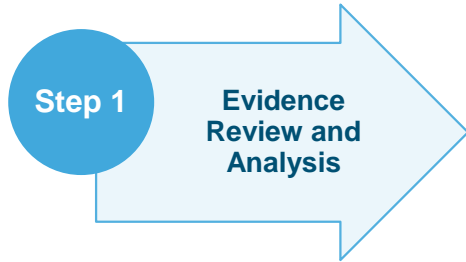
AusHFG Application



Part D: Infection Prevention and Control



AusHFG Part D: Infection Prevention and Control Review



Comprehensive literature review including:

- NHMRC, Australian Guidelines for the Prevention and Control of Infection in Healthcare
- ACSQHC, National Safety and Quality Health Service Standards (and other publications)
- ACIPC Position Statements and Guides
- NSW Health Clinical Excellence Commission (CEC)
- International organisations e.g. WHO, CDC
- Standards Australia
- Standards New Zealand
- Jurisdictional specific guidance e.g. NSW CEC, Infection Prevention & Control Practice Handbook



Expert Reference Group Consultation

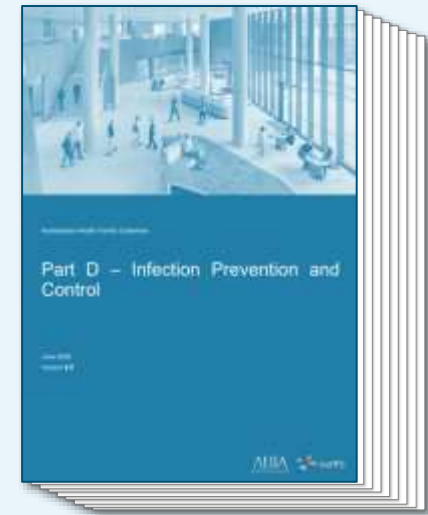


Including:

- Australian Commission on Safety and Quality in Health Care (ACSQHC)
- Australasian College for Infection Prevention and Control (ACIPC)



- Final review and endorsement by all AHIA jurisdictions
- Publication on the AusHFG website April 2025



AusHFG Part D – Overarching Principles for Healthcare Facilities



Part D: Infection Prevention and Control - Key Updates



AusHFG Part D – Key Updates

Hand Hygiene Facilities

- Risk of infection transmission associated with biofilm buildup in basins and drains.
- No universal consensus on the appropriate clearance around a handwash basin (HWB) to limit contamination risk - the 'splash zone'.
- Based on currently available information 1.2m - 2m between the basin and patient bed/other equipment is recommended and/or locate HWBs directly outside of nominated patient/treatment rooms.
- Larger splash zones may have a significant impact on room size and associated costs.
- Further research needed.



Source: Garvey MI et al, The sink splash zone. Journal of Hospital Infection May 2023;135:154-156.



AusHFG Part D – Hand Hygiene Schedules Key Updates

Unit / Room	Key Changes
Inpatient Unit	Easy access by staff within or directly outside each single bedroom (based on local IPC team assessment)
Intensive Care Unit	One HWB shared between 2 – 4 open bays subject to the unit layout (assume one basin between two bays in early planning)
Neonatal Care Unit	One HWB shared between 4 – 6 open bays subject to the unit layout (assume one basin between four bays in early planning)
Emergency Department	For open bays, one HWB shared between 4 – 6 bays open bays subject to the unit layout. HWBs may be shared between triage rooms subject to ED and IPC consultation.
Medical Imaging	Diagnostic Modalities: HWB in-room is optional, based on consultation with Imaging and IPC staff. If shared between two rooms, it must be directly accessible from the corridor. HWBs are required in imaging rooms using contrast, for procedures, or supporting trauma services.
Clean Store	Handwash basin is not required and ABHR to be provided within the room near the entry.
Medication Store	HWB is optional subject to IPC risk assessment. Where not provided a HWB should be accessible directly outside the room and operational policies should be established relating to the management of medication spills and splashes.



AusHFG Part D – Hand Hygiene Facilities Key Updates

Theme

Key Changes

Handwash Basin Design

Basin spout and waste must be offset to prevent aerosolisation of biofilm build up. Achieving the offset is optimised when compatible basin and tapware are selected.

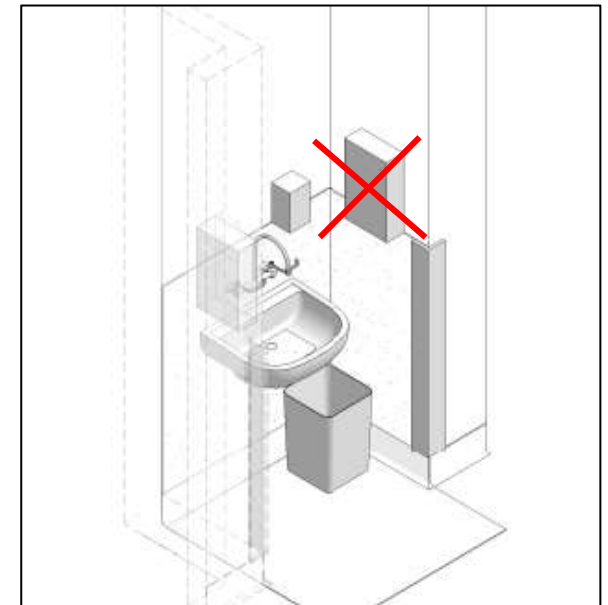
Bottle traps should not be used on clinical basins. Only 'S' and 'P' traps should be used.

A detachable shroud must be provided as a separate component rather than being integrally moulded with the basin to support ease of access to the drainage system.

Fixtures should be chosen to minimise formation of biofilm on internal surfaces and to **minimise splash risk**.

Spout and tap mounting heights must ensure sufficient area between the spout and basin to allow for washing of hands up to the elbow.

Glove dispensers should not be mounted at the basin as they are easily contaminated in this location.



AusHFG Part D – Other IPC Impacts on Health Facility Planning

Theme	Key Changes
Governance	Identification of Infection Prevention and Control (IPC) delegates / key personnel and defining their roles and responsibilities throughout the planning, design and construction phases.
Risk Assessment and Management	Development of an IPC risk management plan is essential to eliminate or minimise safety and security hazards related to IPC (an indicative plan is included in the revised Part D).
Window Treatment Comparisons	A new section on pros and cons of window treatments is now included. Installation of roller blinds in IPU should be risk assessed against IPC requirements, their ability to be effectively cleaned and WHS.
Storage and Supplies	Inclusion of guidance on the AusHFG terminology relating to different storerooms i.e. sterile stores, clean stores, general stores and equipment stores and associated design considerations.
Sustainability	A new section that details opportunities and risks associated with sustainability .



Where to next?.....



AusHFG Part D – Future Reviews



AusHFG Moving Forwards and Onwards



AusHFG Keep in Touch



[Subscribe for alerts](#)

[Ask a question](#)

[Give feedback](#)

Search



[AusHFG Parts](#) ▾

[Health Planning Units](#)

[Standard Components](#)

[Resources](#) ▾

[Updates](#) ▾

[About](#) ▾

Welcome to the AusHFG Website

The only home for updated Australasian Health Facility Guideline resources

Modular ward, Bentley Hospital, WA



Thank you!

