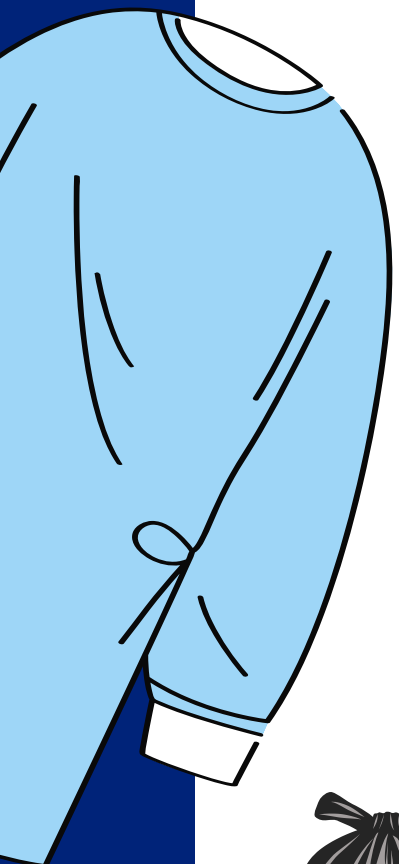




Rethinking Clinical Waste

A SAFE, COST EFFECTIVE AND SUSTAINABLE WASTE MANAGEMENT STRATEGY AT RMH



Presented by Susan Whyte & Carla De Marco





Background



BACKGROUND



At the Royal Melbourne Hospital (RMH), all suspected or confirmed infectious waste is currently disposed of via the clinical waste stream, resulting in high costs and environmental burdens.

Staff confusion about waste segregation has led to the overuse of clinical waste bins, often including items with negligible infectious risk.



AIM

To **reduce** the amount of **clinical waste** generated for patients in isolation by **21,900 bins/yr** to decrease our **financial and environmental impact**.



Method

Risk Assessment

Benchmarking

BENCHMARKING

Benchmarking with other Victorian
Hospitals found
varied **isolation & waste segregation**
practice between different organisms

Type of waste

EPA GUIDANCE

The Victorian EPA state to use a *“risk
based approach looking at mode of
transmission”* – to determine waste
segregation

Journey (internal)

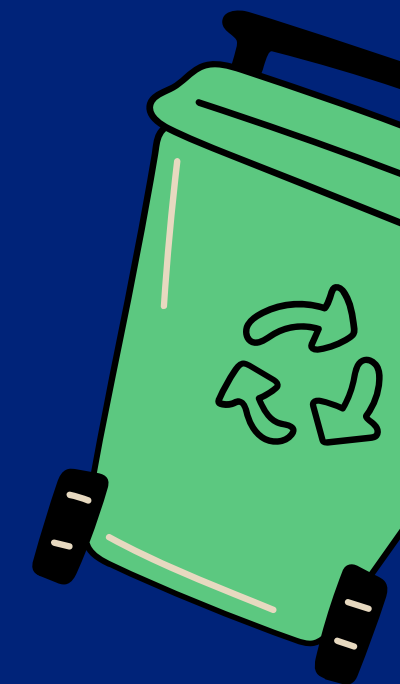
PROCESS MAP

RMH Patients and Staff are not at risk
from clinical and general waste
disposal practices
IT'S A NON TOUCH PROCESS

Journey (external)

END POINT OF WASTE

IT'S A NON-TOUCH PROCESS
Clinical & General waste all end up in
Landfill



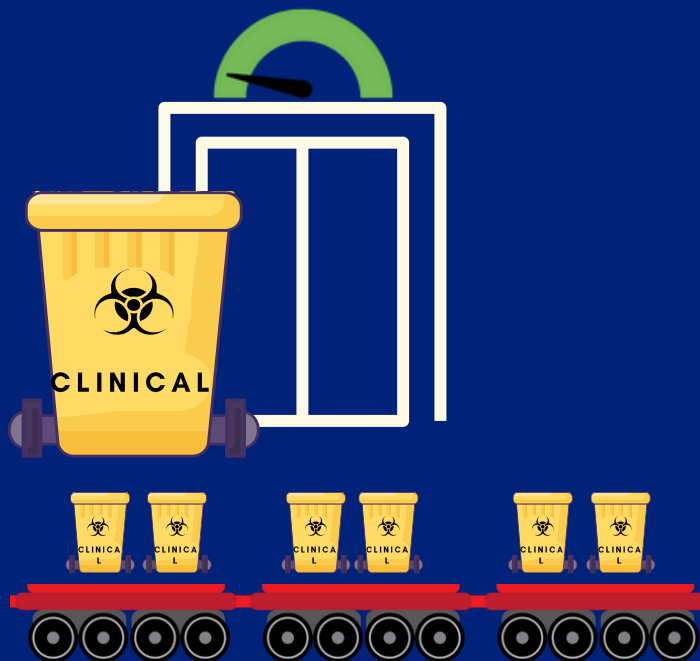
Risk Assessment Journey of Waste (internal)

Clinical Waste

1.



2.



3.



4.



General Waste

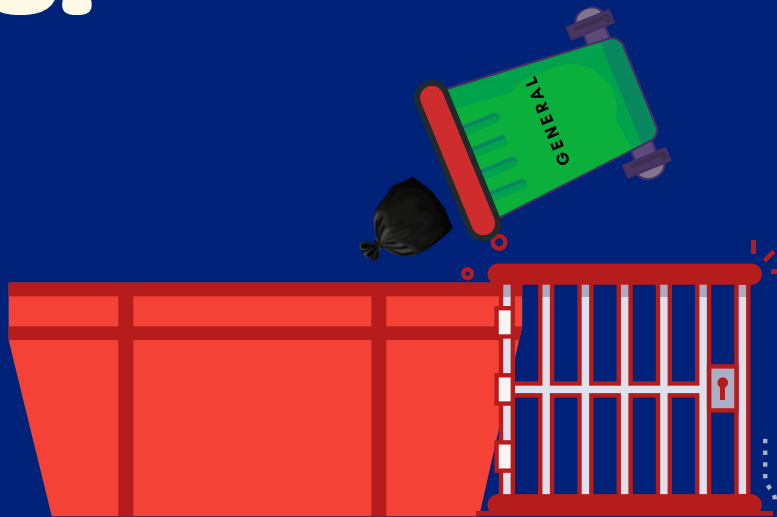
1.



2.



3.

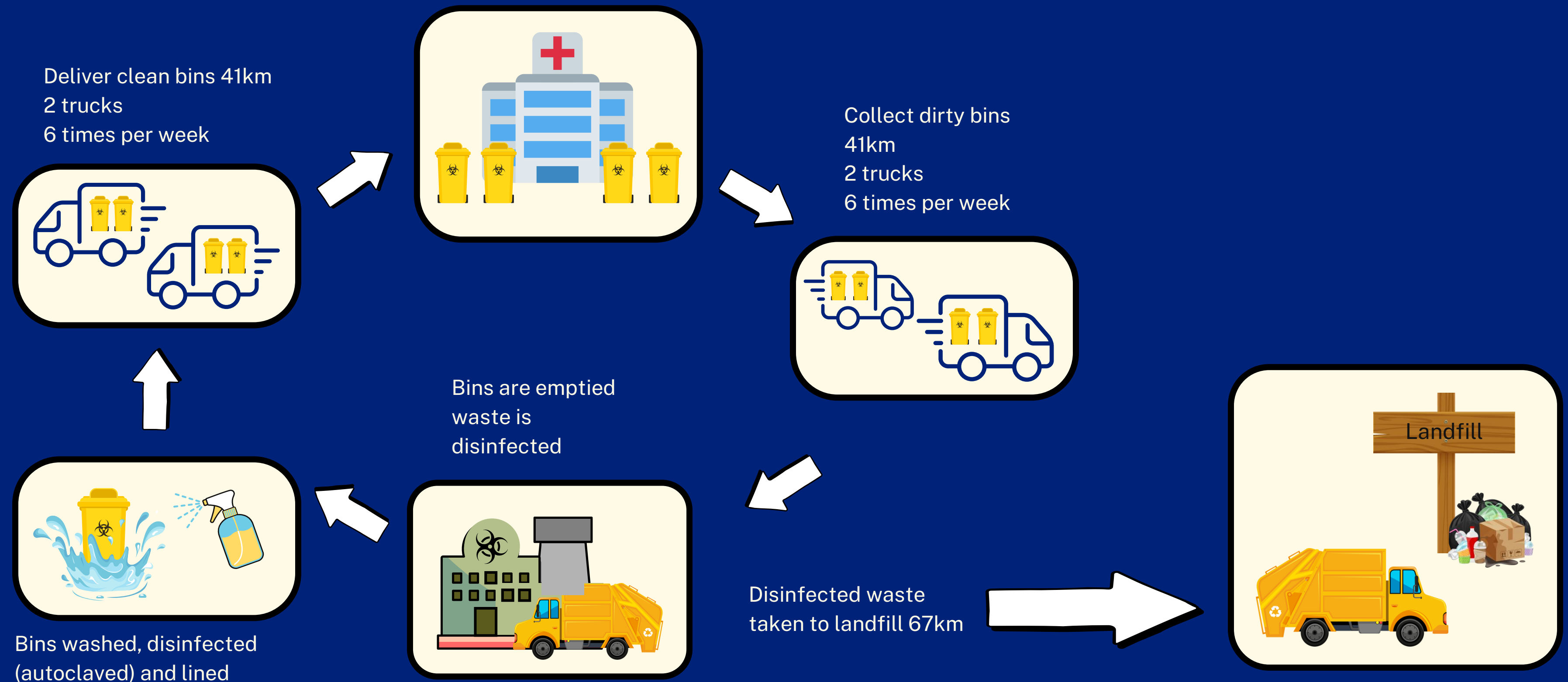


4.



Risk Assessment

A Review of the Clinical Waste Disposal Cycle (external)



Our revised procedure



Clinical

Any items or body fluids that **contain visible blood** as well as cerebrospinal, synovial, pleural, pericardial, peritoneal fluid, semen and vaginal secretions. Sealed/closed small sharp container.

General

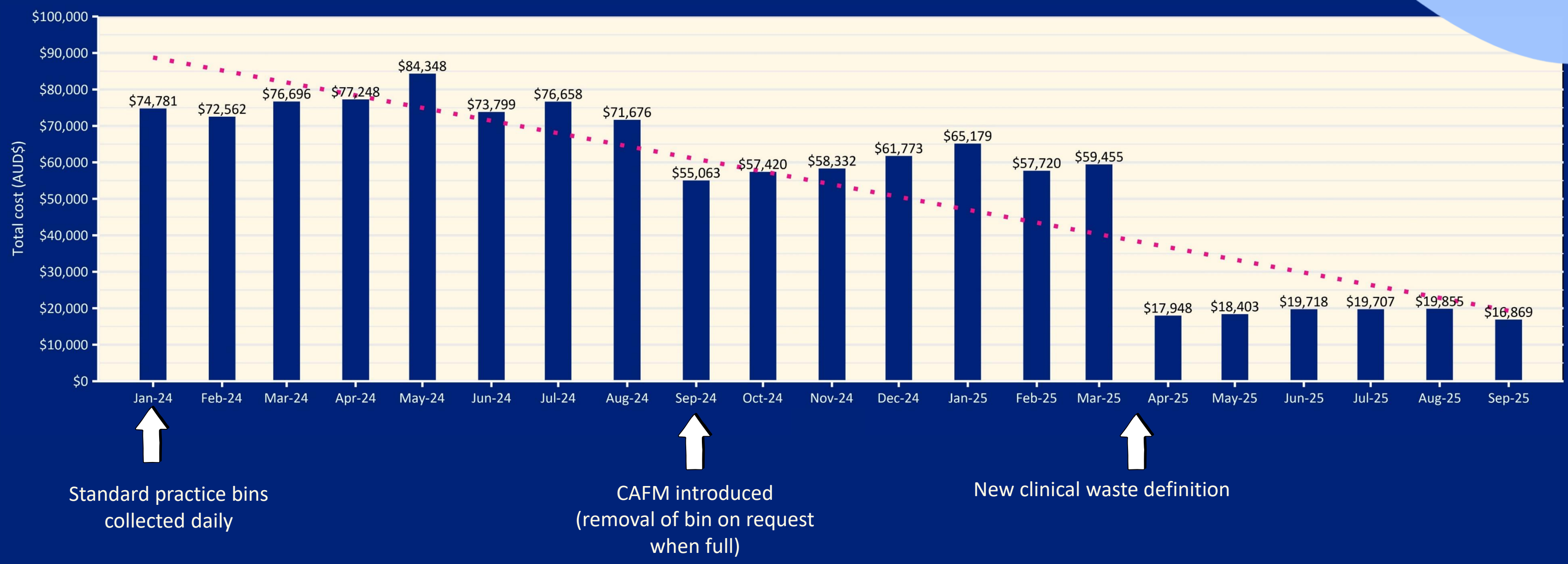
Items or body fluids that **do NOT contain visible blood**. This includes faeces, urine, vomit, sputum & **PPE or consumables from a patient in isolation.**



Our success

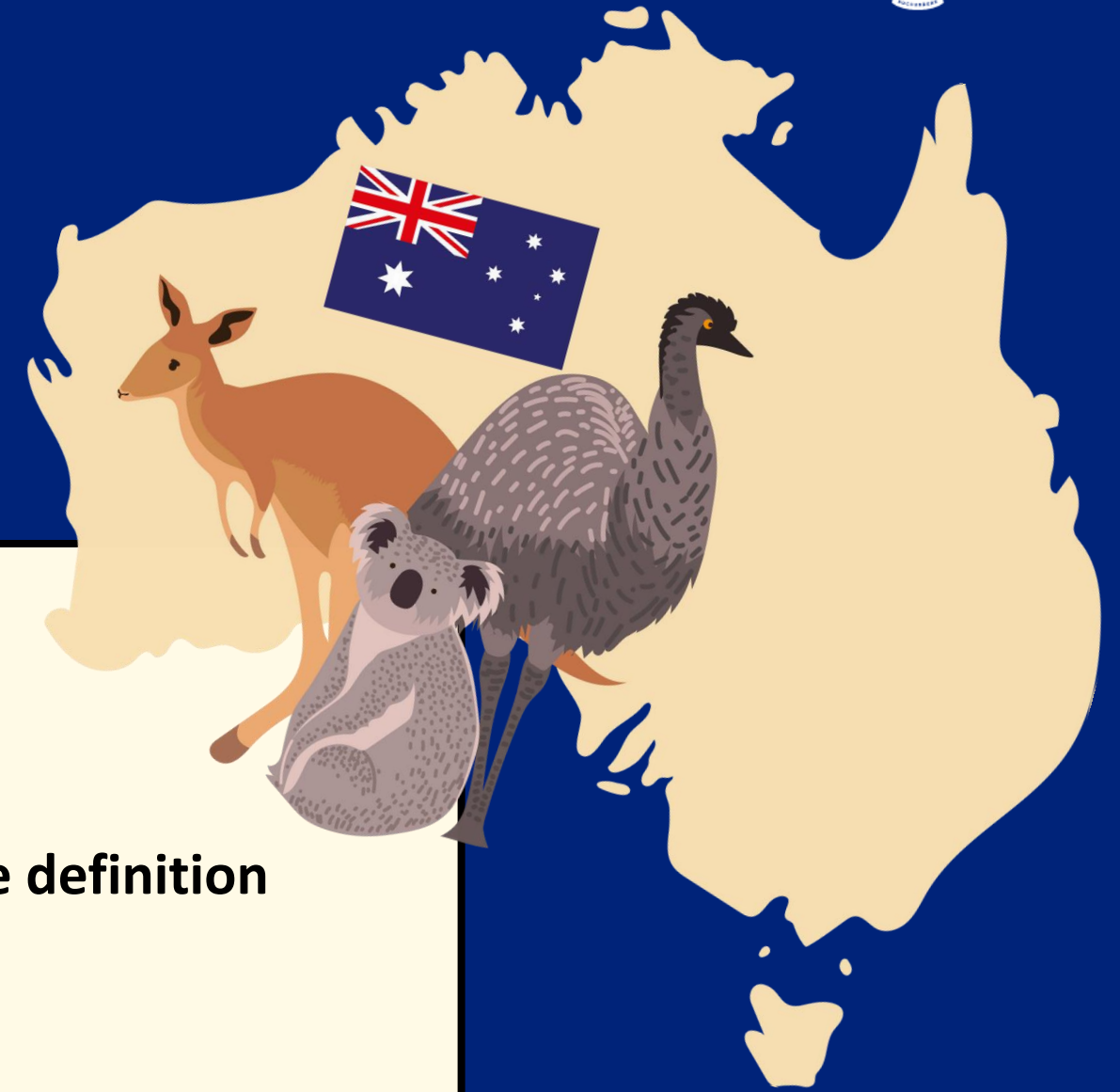
Average cost saving per month
(72% Reduction)
\$49,431

RMH monthly clinical waste costs (Based on \$0.99 per kg for excess Kgs over standard min cost)



Our success

Environmental Sustainability



\$49,431 – Average cost savings per month



72% - Reduction in cost before and after the new clinical waste definition



**Reduced transport by half. i.e., (984km to 492km) per week
50,000 kgCO₂e from bin transport per annum**



= 17 laps around Australia (246,500 km)



Significant cost benefits and sustainability gains.



Q & A

Thank you

Susan.whyte@mh.org.au - CNC

Carla.demarco2@mh.org.au – CNC

The Royal Melbourne Hospital

Associate Prof. Caroline Marshall – Head of Unit of the Infection Prevention and Surveillance Service

Liz Orr – Manager of the Infection Prevention and Surveillance Service

