

Pacific Infection Prevention and Control Staffing: A longitudinal cross-sectional study.

Margaret Leong
Matt Mason

Background & Rationale

The IPC workforce is central to health security in the region. This longitudinal work tracks IPC capacity, roles, and training across the Pacific.

Aims

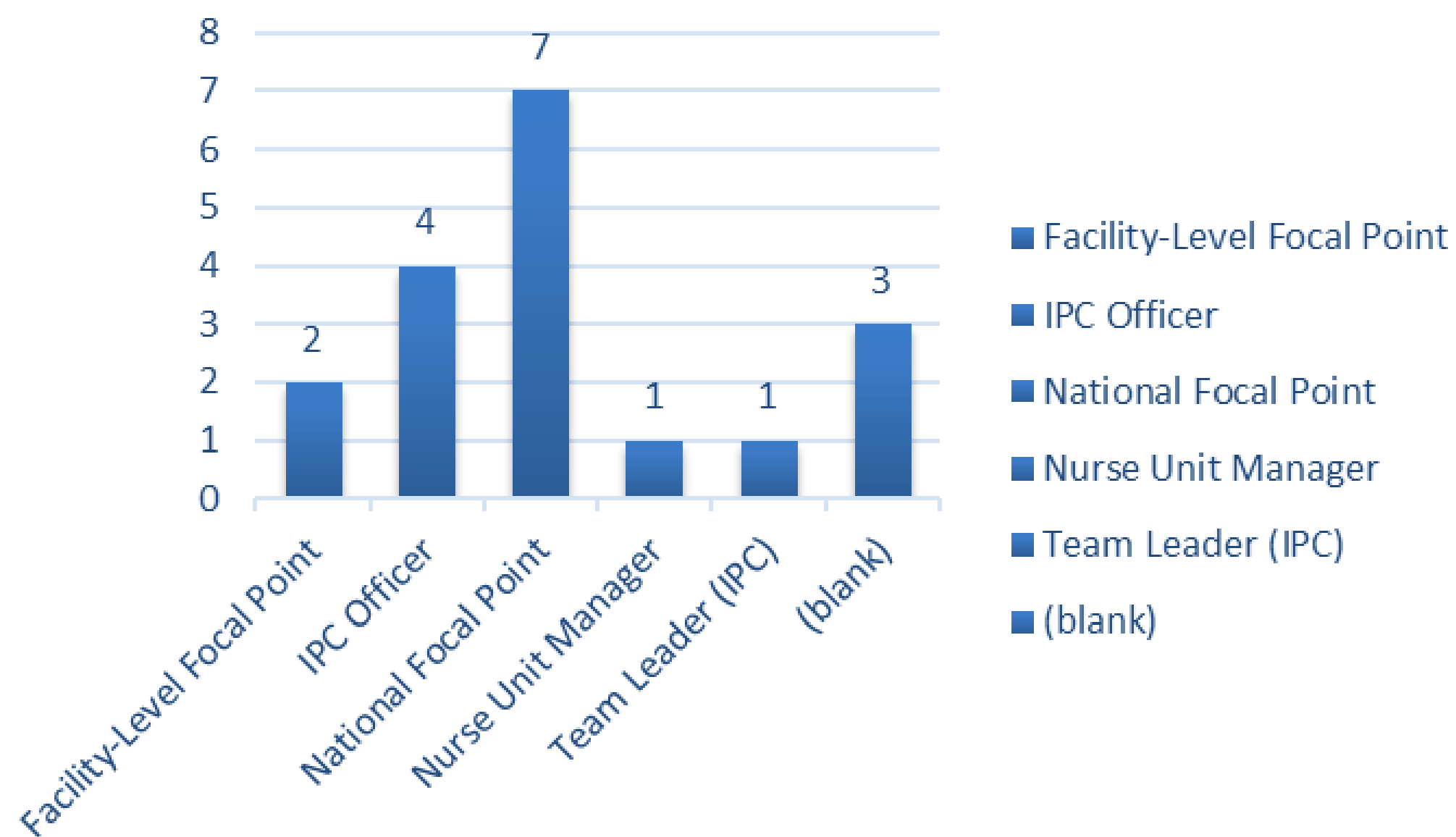
- Document IPC workforce characteristics and trends across Pacific nations
- Identify enablers and barriers to IPC program development
- Inform regional IPC capacity-building initiatives

Methods

- **Online survey of national IPC leads (2023 & 2025)**
- **Analysis: descriptive statistics and longitudinal comparisons.**

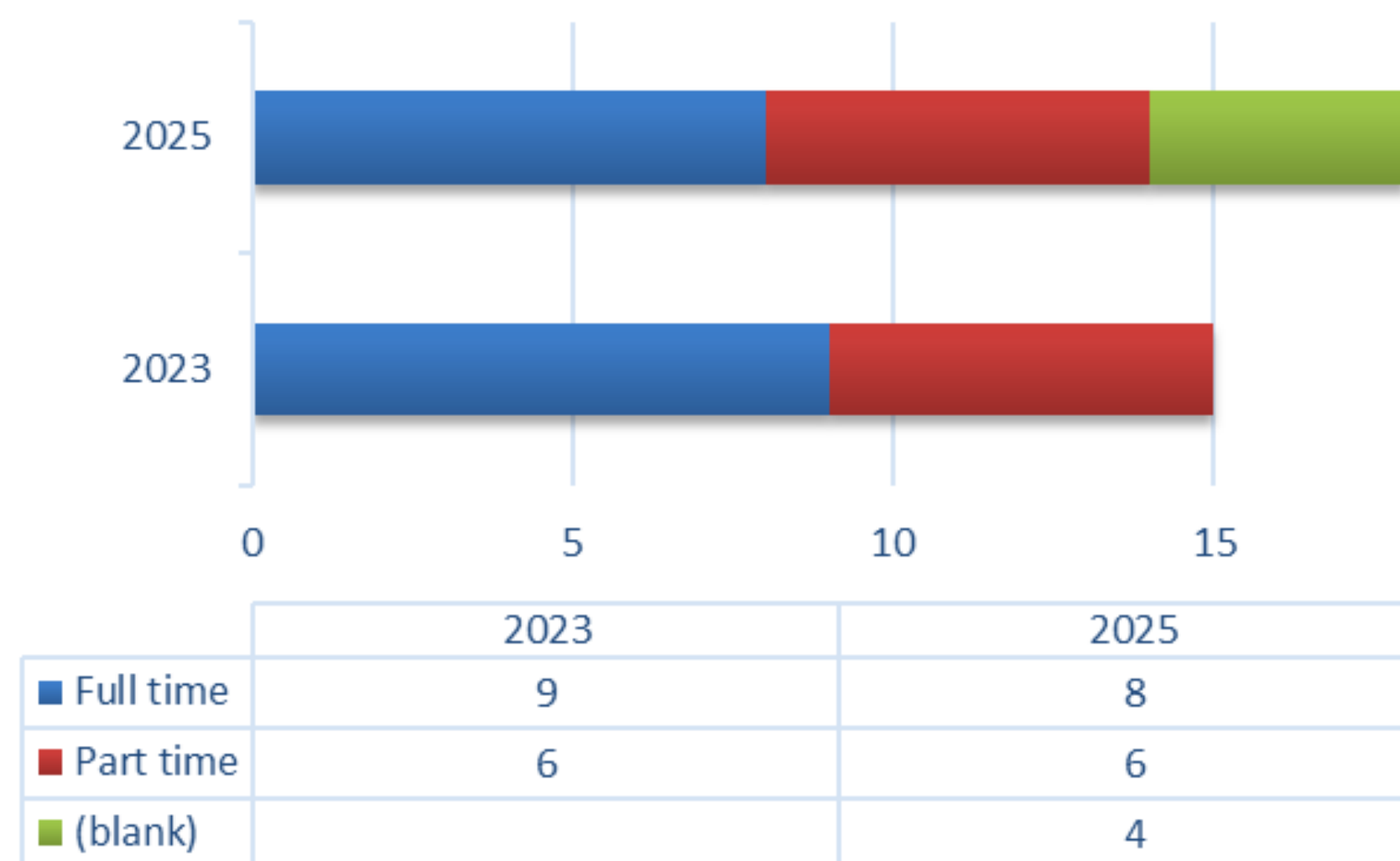
Respondents

Position of Respondents in the Region



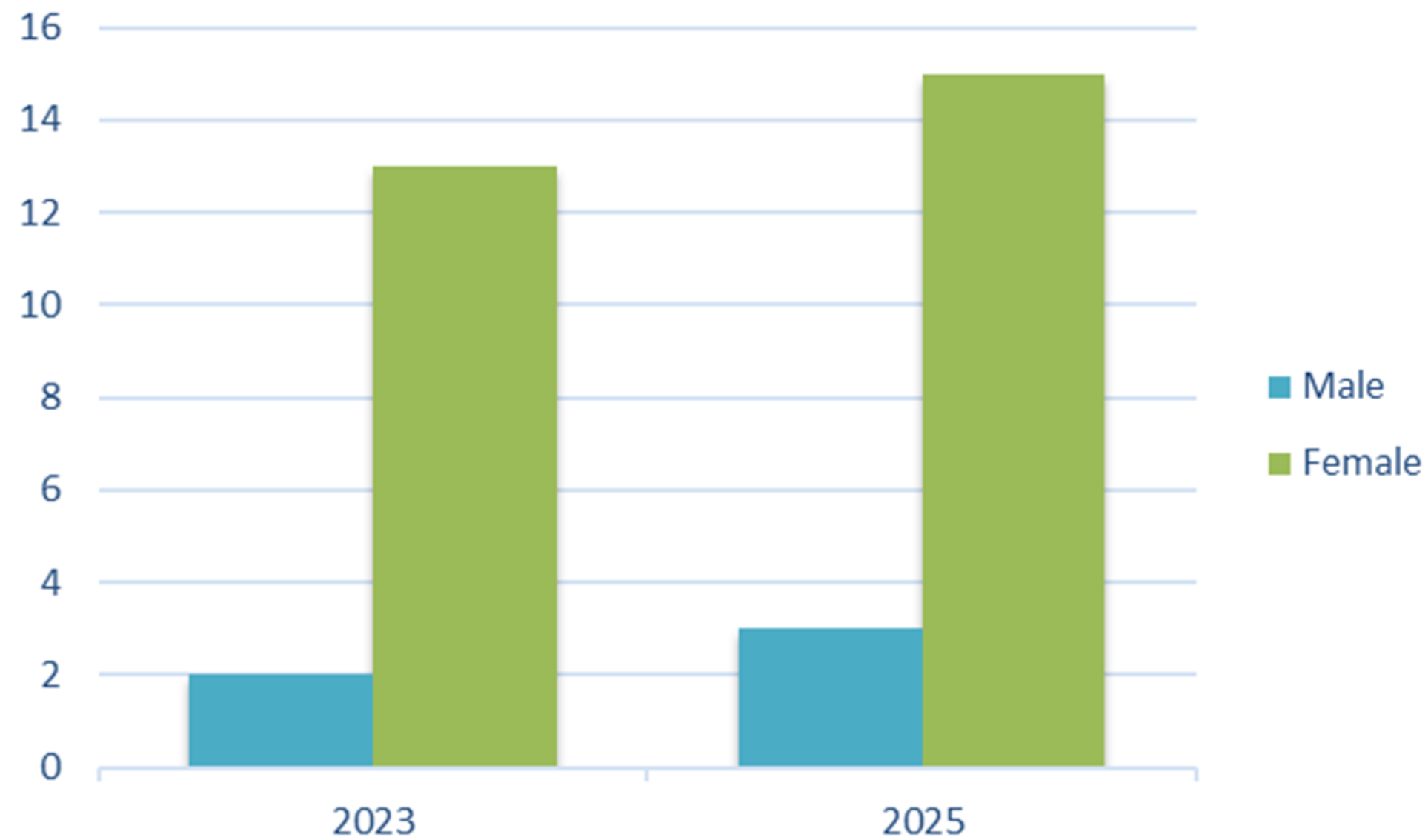
Data was obtained via an online survey completed by staff attending the PICNET meeting, with follow-up by the SPC IPC lead.

Establishment of IPC Positions



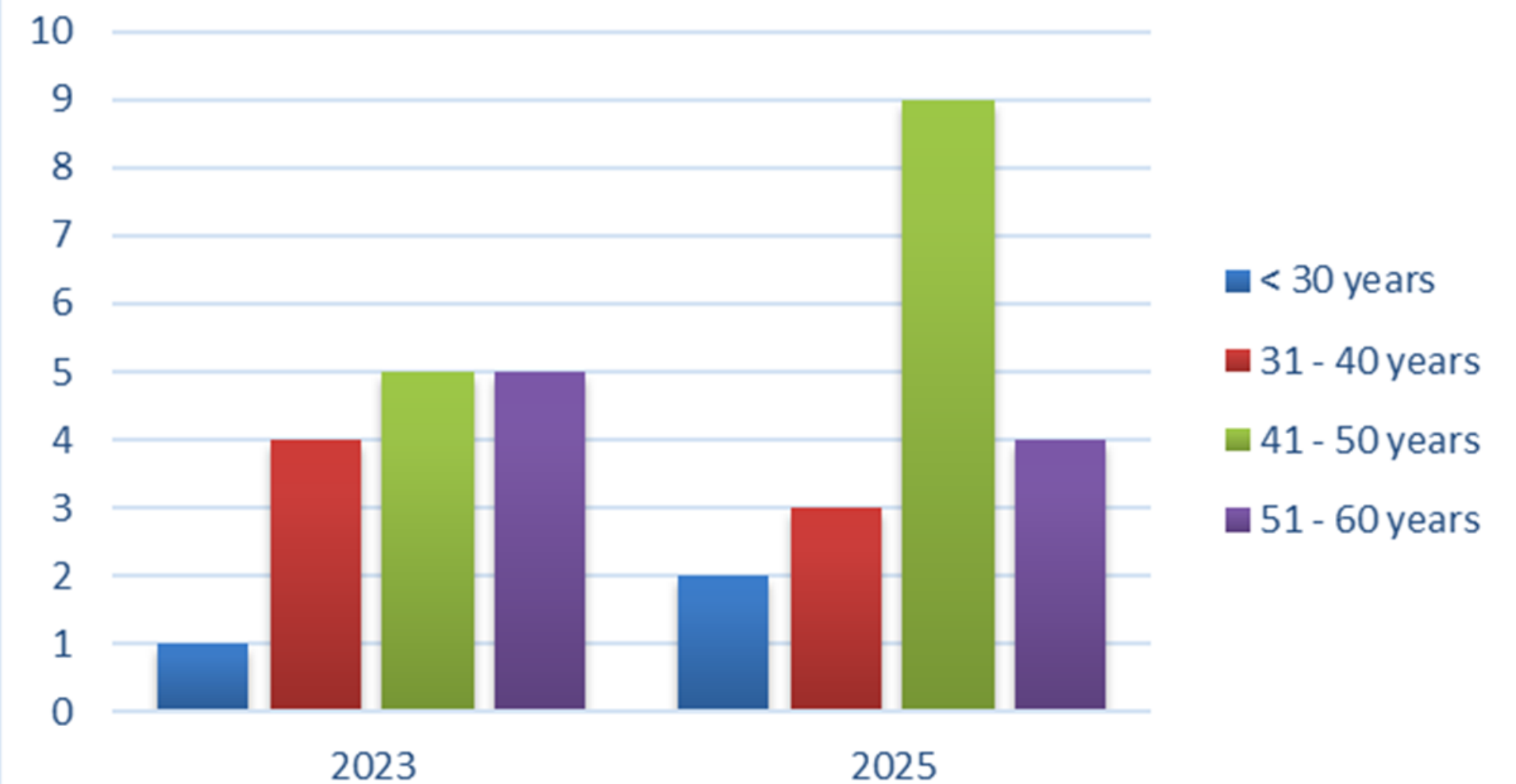
Respondents

Gender



Unsurprisingly a female led space and getting wiser

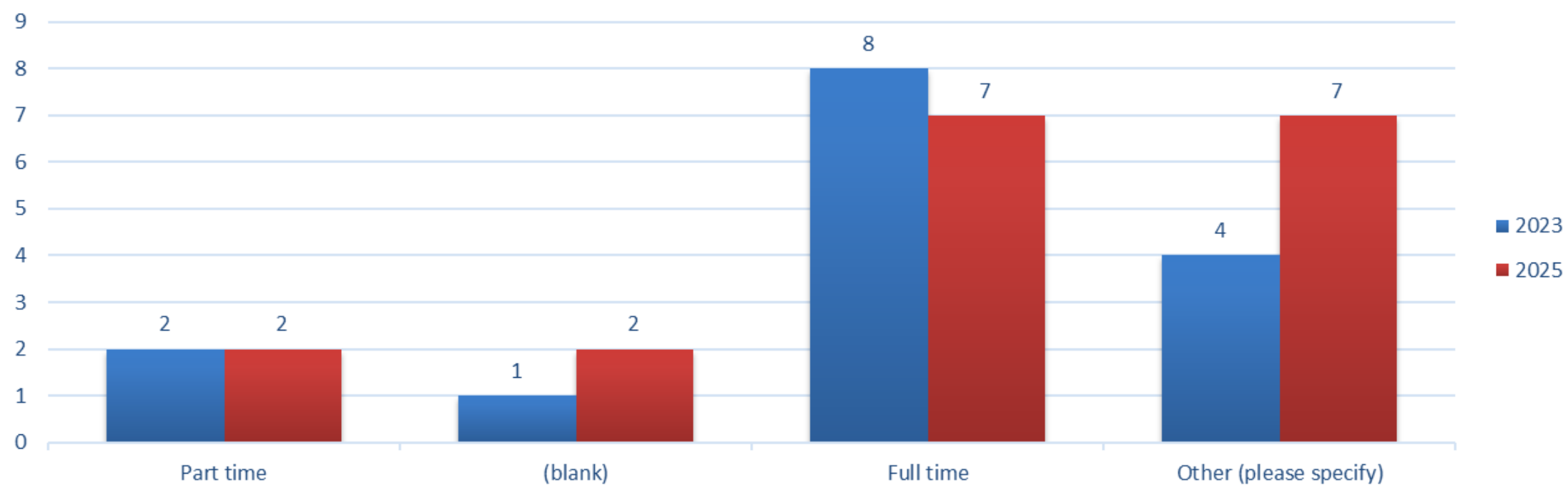
Age Category



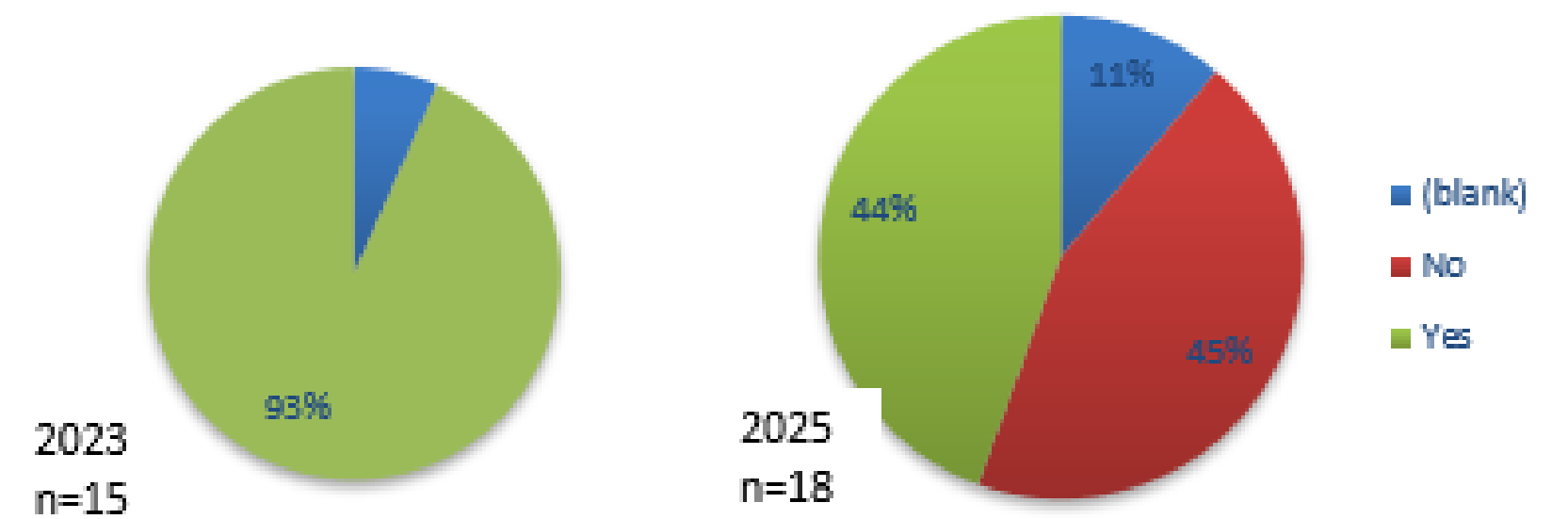
Regional IPC Focal Points

Focal points are generally fulltime but share their workload in areas other than IPC.

IPC Focal Point - Established



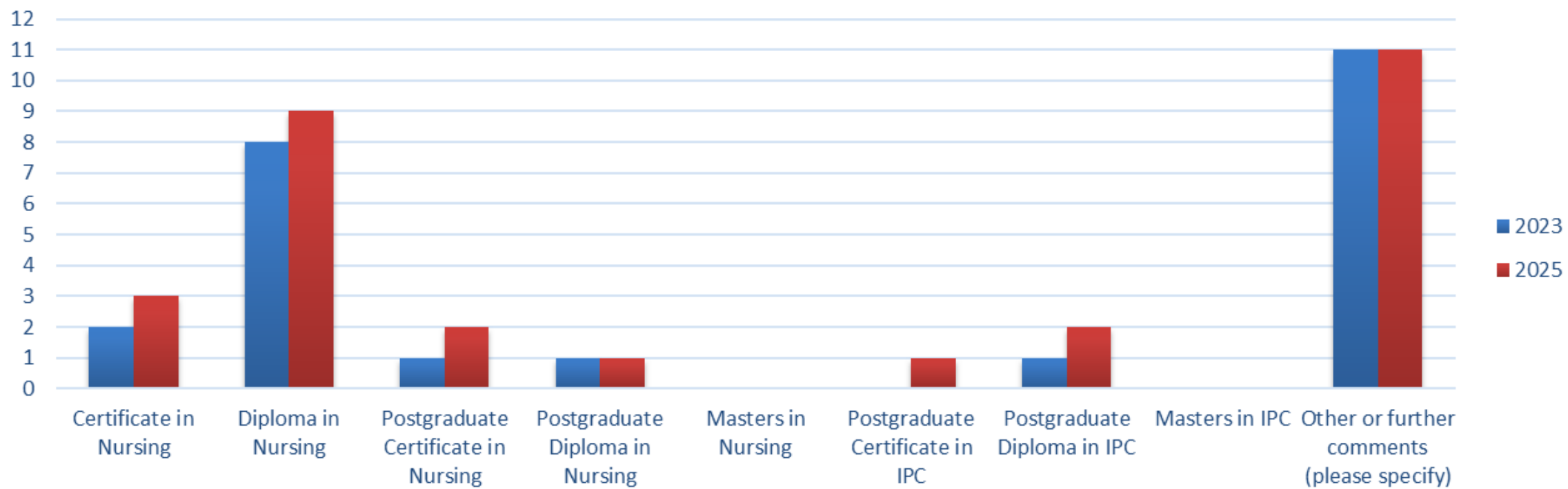
Percentage of Designated IPC Focal Points Established in the Region



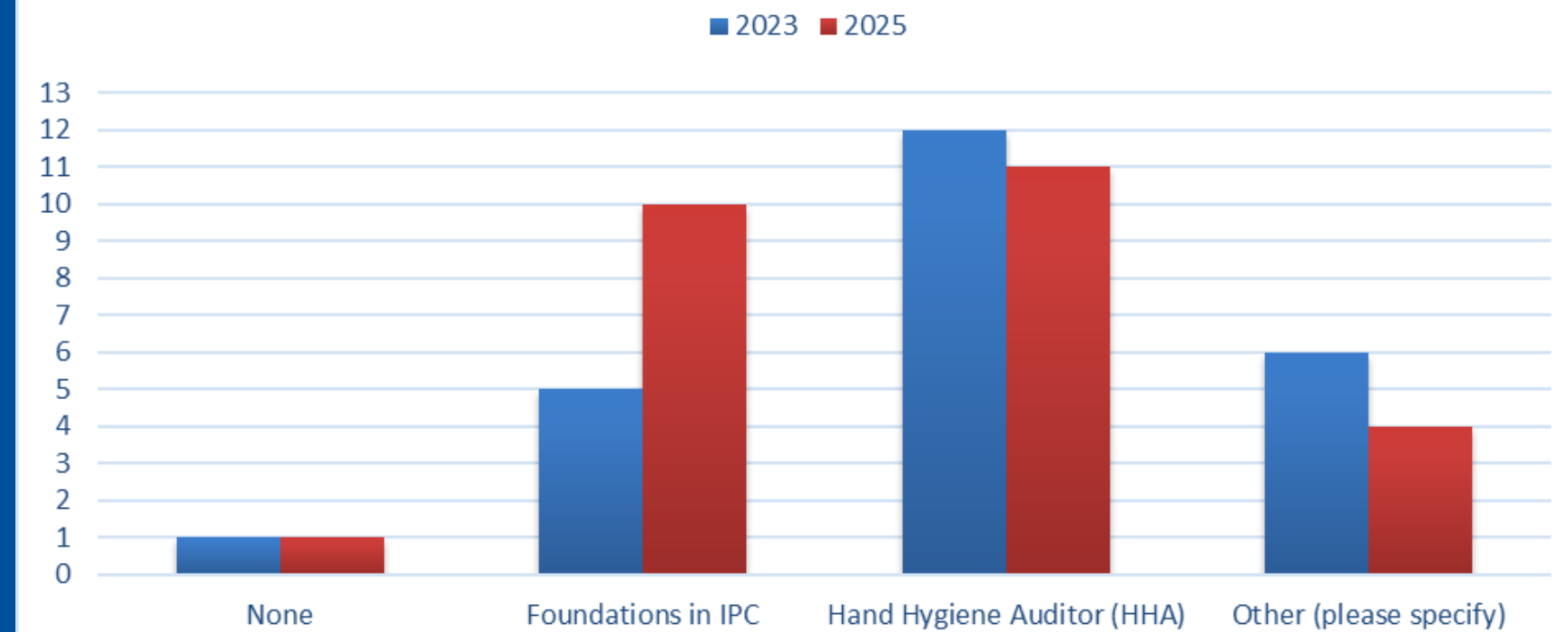
Training and Professional Development

Foundational training is professionally based (nursing) rather than IPC specific. Limited postgraduate level training.

Formal Training Qualifications

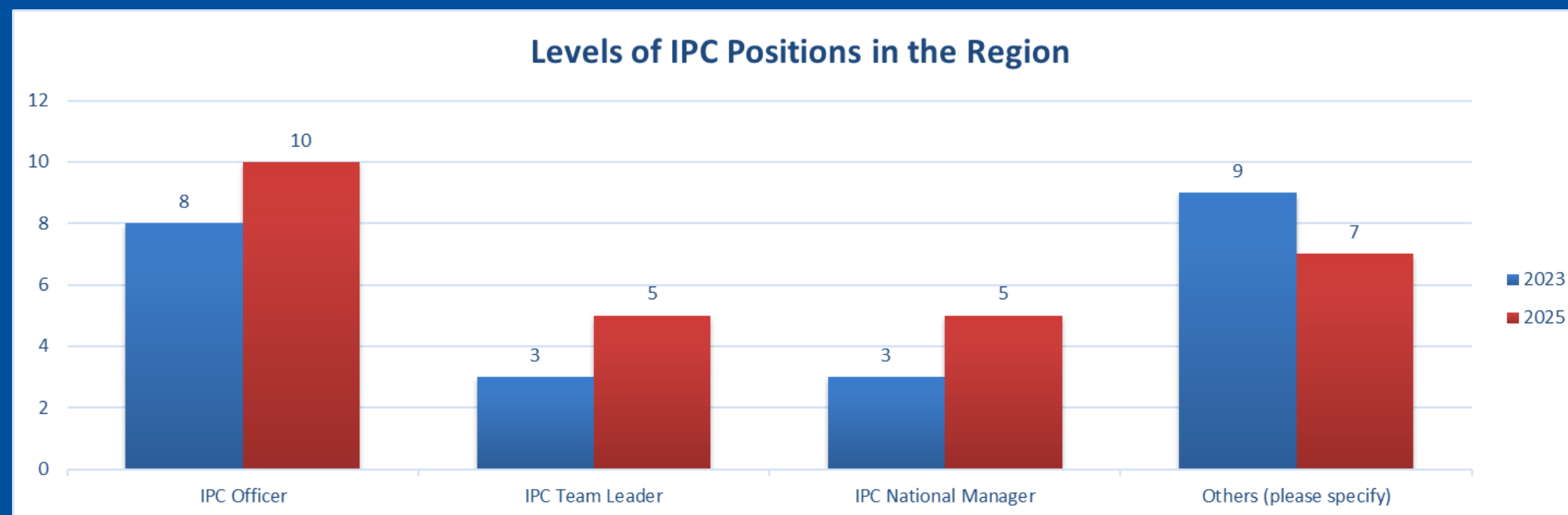
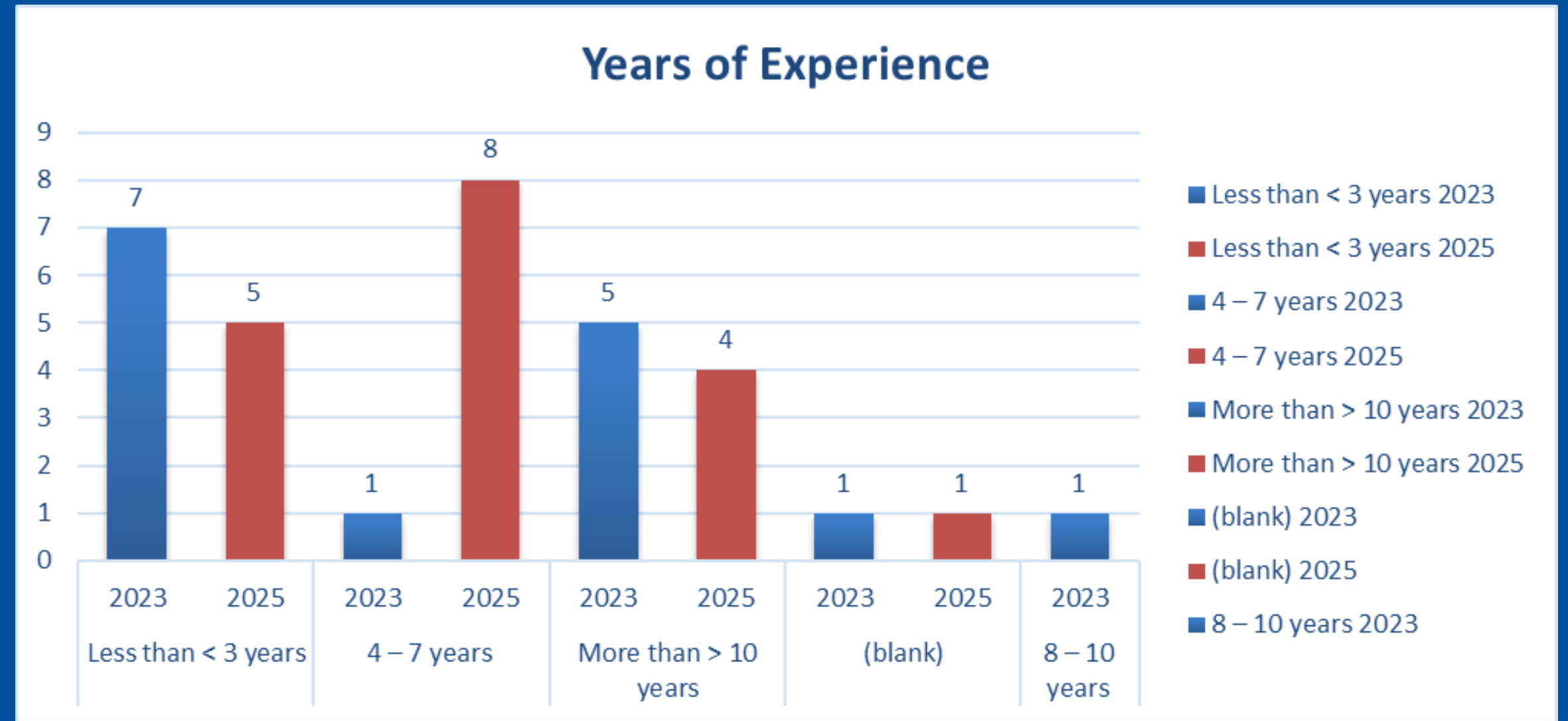


Other Training Programs in IPC



Years of Experience

Growth in mid-career IPC with positions reflecting this.



Barriers and Enablers

- regional networks
- WHO support
- training programs
- funding constraints
- staff turnover
- limited access to IPC education

Conclusions & Next Steps

- Strengthen sustainable IPC leadership pipelines and targeted workforce development.
- Align findings with Pacific health security frameworks and expand access to training and further education.

Thankyou, any questions?

We would like to acknowledge all the IPC focal points who provided responses for their countries over the course of this program.